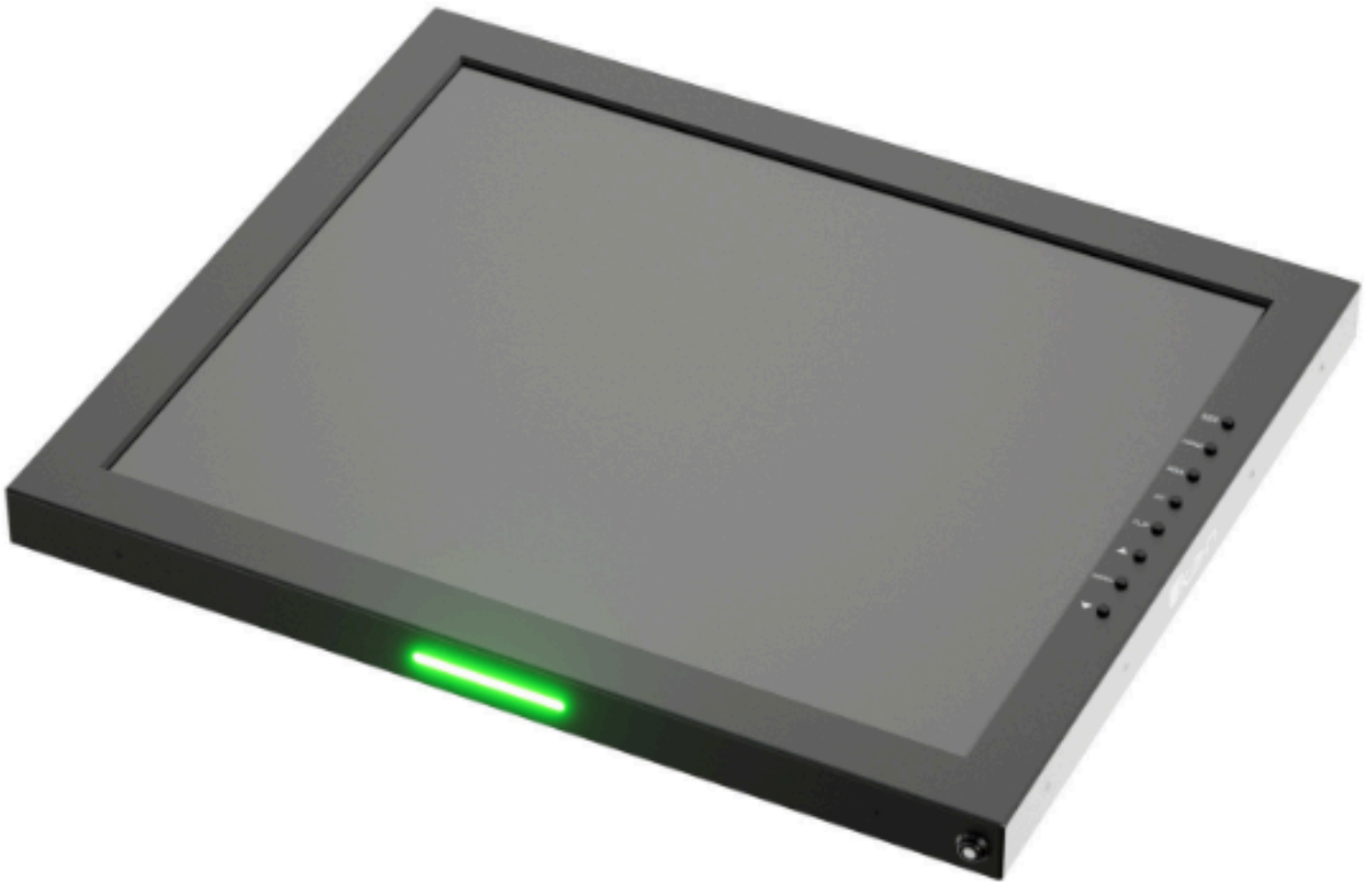


PT19-T | Quick Start Guide



19" High Bright SDI Teleprompter LED Monitor w/ Tally

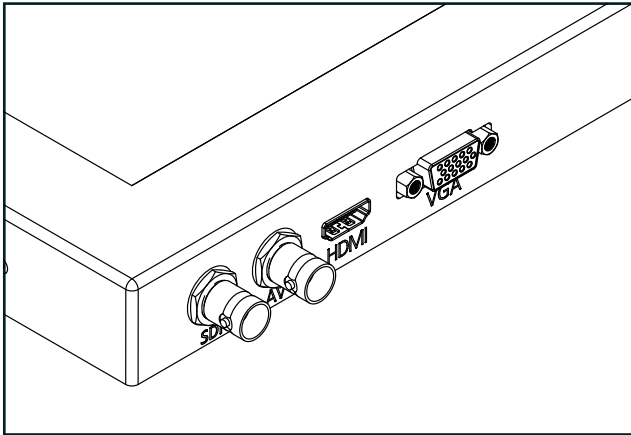


What's Included

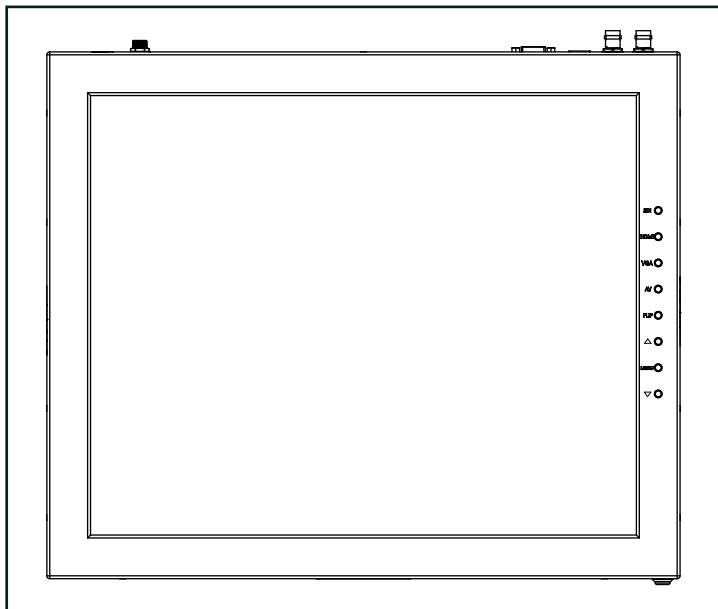
1 x Teleprompter Monitor w/ Tally

☐ 1 x Power Adapter

Monitor Input Ports



SDI – BNC Connection
AV – Composite BNC Connection
VGA – DE15 Connection
HDMI – High-Definition Multimedia Interface Input Connection
12 - 24V – Threaded Barrel Power Input



- HDMI – Switch HDMI input
- VGA – Switch to VGA input
- VGA – Switch to VGA input
- AV – Switch to Composite input
- Flip – Toggle image flip
(Can be set to horizontal, vertical, or both via menu)
- Up Arrow – Toggle up to adjust setting
- Menu – Access to monitor settings
- Down Arrow – Toggle down to adjust setting

Monitor Menu Settings

Video Config

- Contrast (White Level)
- Brightness (Black Level)
- Tint (Chroma Hue)
- Chroma (Chroma Saturation)
- Sharpness (Detail)
- RGB Setup – Manually configure RGB
- Return

System Config

Menu Duration – Set duration of how long menu stays on screen

Video Ratio – Set screen aspect ratio 16:9 or 4:3 (4:3 is native resolution, 16:9 will create black bars)

Flip-H – Assign toggle button to flip image horizontally

Flip-V – Assign toggle button to flip image vertically

Reset – Factory reset

Return

PC Setup (Only available for VGA)

H-Position – Adjust horizontal position
V-Position – Adjust vertical position
Auto – Monitor automatically adjust position
Return

Exit

How to set-up FLIP button feature:

1. Press MENU button
2. Navigate to SYSTEM CONFIG.
3. Navigate to FLIP-V or FLIP-H
4. Change FLIP-V and/or FLIP-H to "ON"
5. Exit MENU
6. The FLIP button should now be activated and can be pressed to mirror the image Horizontally or Vertically
7. When FLIP-H is ON, the image will flip Horizontally
8. When FLIP-V is ON, the image will flip Vertically
9. If both are ON, the FLIP button will toggle both Horizontal and Vertical flip

Specifications

Supported Video Signals

SDI

720x480i @ 59.94, 60 Hz

720x576i @ 50 Hz

1280x720p @ 50, 60 Hz

1920x1080i @ 50, 59.94, 60 Hz

1920x1080psf @ 24, 25, 29.97, 30 Hz

1920x1080p @ 23.98, 24, 25, 29.97, 30, 50, 59.94, 60 Hz

HDMI

720x480i & 720x480p @ 59.94, 60 Hz

720x576i & 720x576p @ 50 Hz

1280x720p @ 50, 59.94, 60 Hz

1920x1080i @ 50, 59.94, 60 Hz

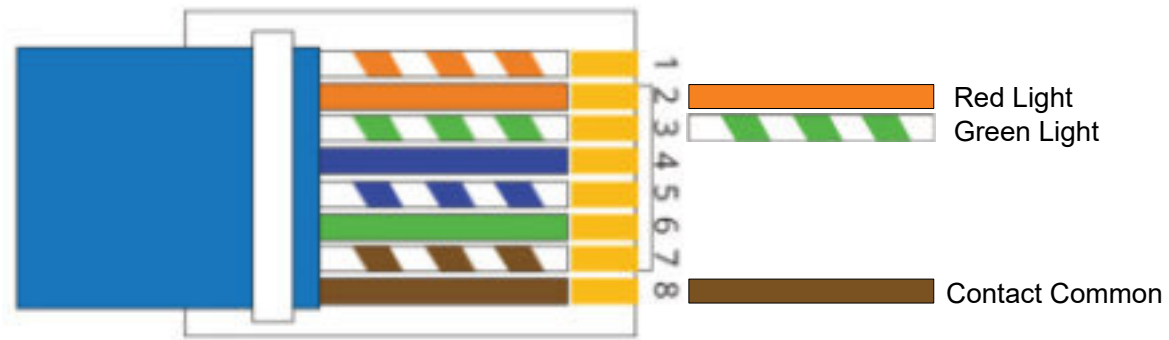
1920x1080psf @ 24, 25, 29.97, 30 Hz

1920x1080p @ 23.98, 24, 25, 29.97, 30, 50, 59.94, 60 Hz

Pinout Diagram for Tally Light

Tally Light Pinout:

Tally Pin Layout Diagram



Learn More

More dynamic information at official website :www.ikancorp.com

Support

Contact email: support@ikancorp.com

©2025 Ikan International. All rights reserved.

Learn More

More dynamic information at official website: www.ikancorp.com

Support

Contact email: support@ikancorp.com

CONDITIONS OF WARRANTY SERVICE

- Free service for one year from the day of purchase if the problem is caused by manufacturing errors.
- The components and maintenance service fee will be charged if the warranty period is expired.

Free Service will not be Provided in the Following Situations:(*Even if the product is still within the warranty period.)

- Damage caused by abuse or misuse, dismantling, or changes to the product not made by the company.
- Damage caused by natural disaster, abnormal voltage, and environmental factors, etc.

©2025 Ikan International. All rights reserved.

