



## Stryder Mini Zoom 65W Ellipsoidal SE65Z-CW



Learn More at [www.ikancorp.com](http://www.ikancorp.com)

### Support

Contact email: [support@ikancorp.com](mailto:support@ikancorp.com)

### CONDITIONS OF WARRANTY SERVICE

- Free service for 1 year from the day of purchase if the problem is caused by manufacturing errors.
- The components and maintenance service fee will be charged if the warranty period is expired.

Free service will not be provided in the Following Situations: (\*Even if the product is still within the warranty period.)

- Damage caused by abuse or misuse, dismantling, or changes to the product not made by the company.
- Damage caused by natural disaster, abnormal voltage, and environmental factors, etc.

[www.ikancorp.com](http://www.ikancorp.com)

# Contents

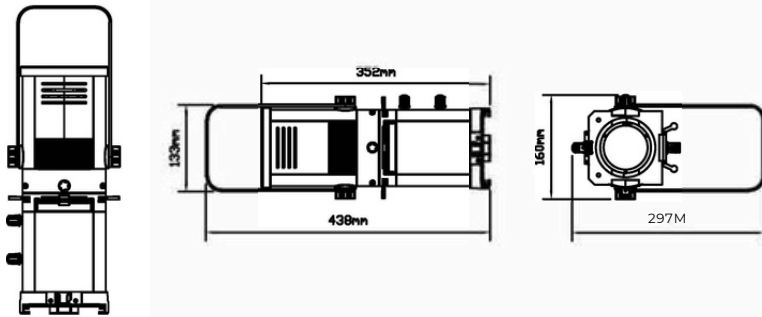
What's Included	1
Introduction	1
Specifications	1
Photometric	2
Safety	2
Daisy Chain Power	3
Gel Frame	3
Gobo Frame	4
Focus & Zoom	4
DMX Protocol	5
Control Settings	6

## What's Included:

- 1x Ellipsoidal Zoom
- 1x Gobo Frame
- 1x Gel Holder
- 1x Power Cord
- 1x Power Plug
- 1x User Manual

## Introduction

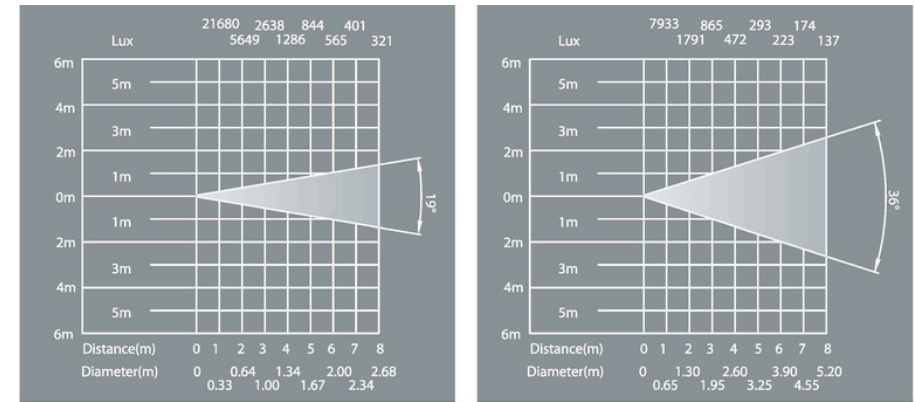
Designed with energy saving and environmental protection in mind, this device features low power consumption and highly efficient LEDs. The housing is made from new high-strength, heat-resistant engineering plastics, offering a sleek and elegant appearance. Both the design and manufacturing processes adhere to IEC standards. This device is ideal for use in exhibition halls, museums, theaters, and performance venues. It fully complies with the international DMX512 standard, allowing for both individual and multi-unit control.



## Specifications

- Power Supply: AC100V-240V,50HZ/60HZ
- Power Consumption: 65W
- Lamp: LED SOW white
- Color temperature: 5600K
- CRI: 95
- LED life: >50000H
- Environmental Temperature: -68~113°F (-20~45°C)
- Adjustable Beam Angle: 19-36
- Weight: 4 lbs (1.8 kg)
- Dimensions: 15x7.7x7.7 in (380x195x195 mm)

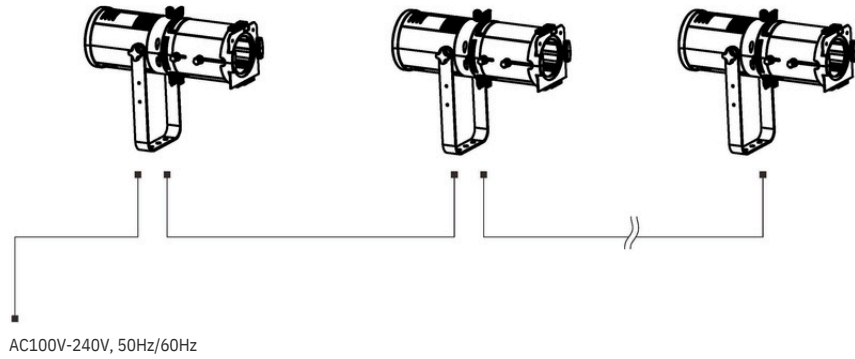
## Photometrics



## Safety

- User must follow the instructions of this manual
- Make sure the power switch is off, the power plug, outlet and the earth connection is in well condition before connecting the device with the mains.
- Always disconnect from the mains, when the device is on installation and dismantled.
- The minimum distance between light-output and the illuminated surface should be 50cm (20in.)
- In order to safeguard sufficient ventilation, leave 50 cm of free space around the device. Please note that heat-sensitive objects may be deformed or damaged by the emitted heat.
- During the operation the housing may become hot to touch. Ensure light cools down before handling.
- For indoors use.

## Daisy Chain Power



For daisy-chaining power between lights, use a power line with the specification 3G0.75 and a maximum current of 5A. When the power supply is 200V-240V, use the grey plug for power interconnection on the device, ensuring that each group does not exceed 14 connected devices. For power supplies of 100V-120V, limit each interconnection to a maximum of 7 connected devices. Additionally, when using the included adapter plug, be sure to connect each pin correctly to ensure proper functionality and safety.

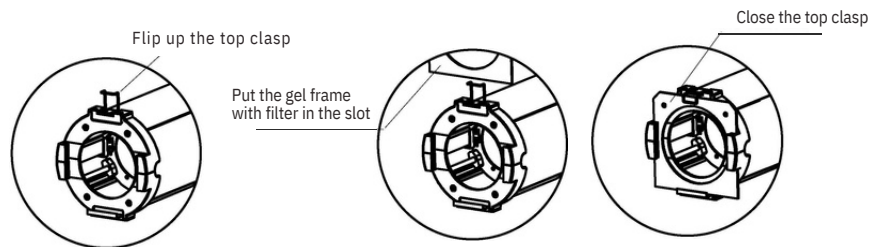
## Pin Connections for Dairy Chain

Pin 1 of power plug connects the "L" of power-cord

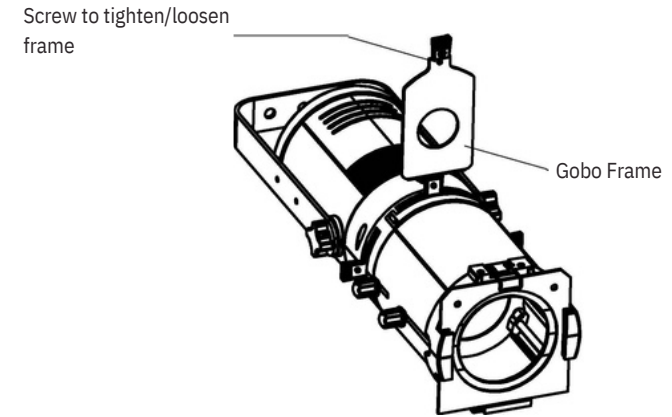
Pin 2 of power plug connects the "N" of power-cord

Pin 3 of power plug connects the "GN" of the power-cord

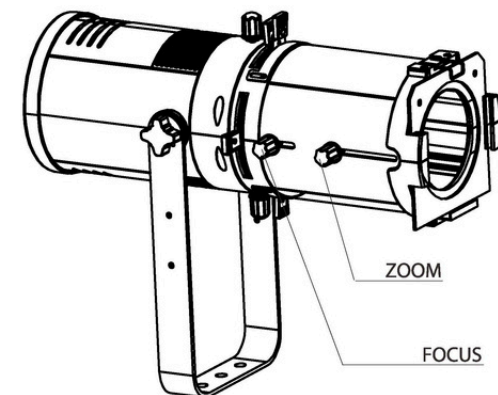
## Using the Gel Frame



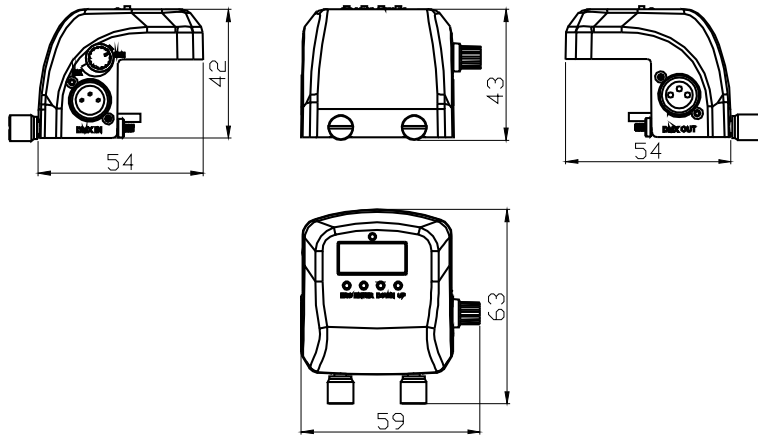
## Using the Gobo Frame



## Focus and Zoom Control Knobs



## DMX Control Box



ESC - Return/Cancel  
 Enter - Confirm  
 Up/Down - Navigation

## DMX Protocol

CHANNEL	NUMERIC	EFFECT
1	000—255	Dimmer intensity 0-100%
	0	Shutter open
2	1—127	Strobe effect with increasing speed
	128—159	Sudden effect with increasing speed
	160—191	Pulse effect with increasing speed
	192—255	Random effect with increasing speed

## DMX Priority

The light fixture's dimming has DMX512 signal priority. When DMX512 signal is detected the light can only be controlled by DMX. To restore manual control disconnect DMX.

## Control Settings



### DMX Address

- The default DMX address is 001 indicated on screen by [A 001]
- To adjust DMX address press the Enter button on DMX address [A 001]. Use the Up or Down buttons to change DMX address. Press Enter to confirm or Esc to cancel.

### Master/Follow Mode

- Each light is set default Master [MAST] [ON] to allow for individual controls.
- To turn a light to follow mode select [MAST] press Enter button and use the Up or Down buttons to select [OFF] and press Enter.
- DMX cable needs to link the master and follow light.

### Scenes

- Available scenes: Strobe[Sc00], Fade In[Sc01], Fade Out[Sc02], Random
- To change scenes select [DENO] press enter button to navigate between [Sc00-02].
- Different scenes can be also be controlled by DMX (see DMX Protocol).

### Manual Controls

- This function is only available when DMX512 signal is not present.
- Select [U000] press Enter button and use Up or Down to select the intensity from 1 - 255.