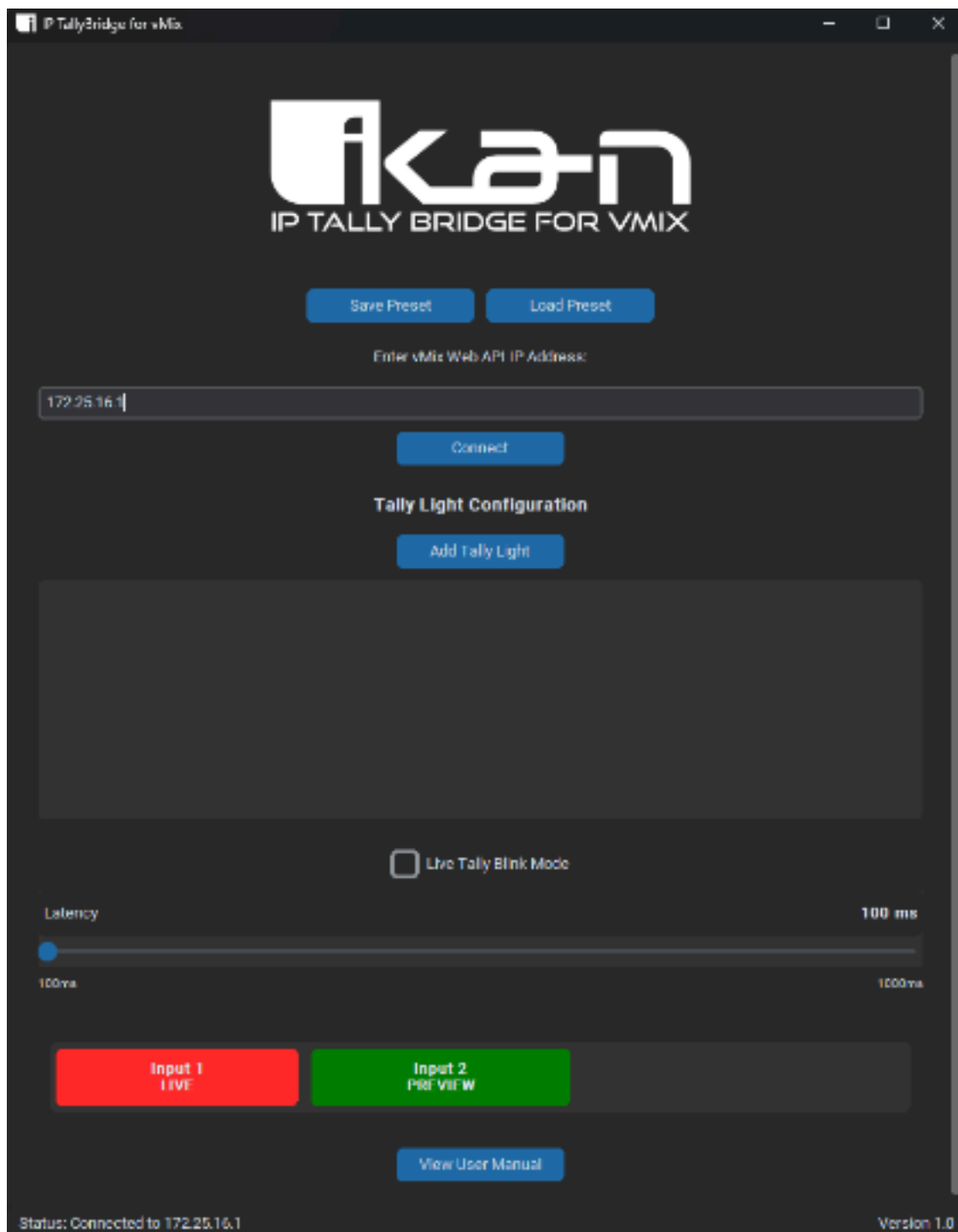


IP Tally Bridge for vMix



OVERVIEW

Thank you for choosing Tally Bridge for vMix! This software makes it simple to connect your Ikan IP tally lights to vMix, so your team can see camera status at a glance. Lights turn red when a camera is live, green when it's in preview, or off when inactive. No complicated setup—just enter IPs and connect.



Table of Contents

1. System Requirements
2. Installation
3. Getting Started
4. Main Features
5. Using Presets
6. Customizing Settings
7. Troubleshooting
8. Uninstall
9. Support and Updates

System Requirements

- Operating System: Windows 10 or later (64-bit recommended).
- Hardware: Any computer that runs vMix; no special hardware needed beyond your Ikan IP tally lights and network.
- Network: Stable local network connection between your vMix machine, tally lights, and this app.
- vMix Version: vMix 4K or Pro (with Web Controller enabled for API access).
- Ikan Tally Lights or Ikan IP Tally Monitor: IP-enabled models (e.g. M19W-NDI).



Installation

1. **Download the App:** Get the latest version from our website (ikancorp.com/shop/software/ikan-ip-tally-bridge-for-vmix/) or the link provided with your purchase.
2. **Run the Installer:** Double-click the .exe file. Follow the on-screen prompts to install. Choose a folder if asked.
3. **Launch the App:** Find "IP TallyBridge for vMix" in your Start menu or desktop shortcut and open it.

The app is ready to use—no restart needed.

Getting Started

1. **Open the App:** Launch Tally Bridge for vMix. You'll see a dark-themed window with a logo (if added) at the top.
2. **Enter vMix IP:** In the "Enter vMix Web API IP Address" field, type the IP of your vMix machine (e.g., 192.168.1.100). This is usually found in vMix under Settings > Web Controller.
3. **Click Connect:** Hit the "Connect" button. The status at the bottom will change to "Status: Connected" if successful.
4. **Add Tally Lights:**
 - Click "Add Tally Light".
 - Enter the tally light's IP (from your Ikan device settings) and the vMix input number it matches (e.g., 1 for Camera 1).
 - Optional: Check "Disable Preview light" if you don't want green for preview mode.
 - Repeat for each light.
5. **Test:** Switch cameras in vMix. Lights should update: red for live, green for preview (unless disabled), off otherwise.

If connection fails, check your vMix IP and ensure the Web Controller is enabled in vMix.

Main Features

Tally Bridge for vMix keeps your production team in sync with clear camera cues.

- **Real-Time Tally Updates:** Lights sync instantly with vMix—red for live cameras, green for preview, off for inactive.
- **Easy Light Setup:** Add tally lights by IP and vMix input number. Remove or edit anytime.
- **Disable Preview Option:** Skip green lights for simpler setups; each light has its own toggle.
- **Live Flash Mode:** Blink red lights when a camera goes live for quick alerts—toggle on or off.
- **Latency Adjustment:** Slide from 100ms (fast updates) to 1000ms (less network use) to fit your setup.
- **Visual Input Display:** Color-coded boxes show all vMix inputs' status at a glance.
- **User Manual Link:** Quick button to view the most up-to-date Ikan tally light manual online.

The app's dark mode interface is clean and easy on the eyes during long productions.

Using Presets

Presets save your setups for quick changes between shows.

1. **Save a Preset:** Set up your vMix IP and tally lights. Click "Save Preset" and choose a file name (e.g., show1.txt).
2. **Load a Preset:** Click "Load Preset" and select your saved file. Your settings load automatically.

Presets remember IPs, input numbers, and preview disable toggles—no retyping needed.

Customizing Settings

Tailor the app to your workflow.

- **Flash Mode:** Check "Live Tally Blink Mode" to blink red when a camera goes live (10 times over 3 seconds).
- **Latency Slider:** Move the slider to change update speed. Lower for fast networks, higher for stability.
- **Preview Disable:** Per-light toggle to turn off green preview lights if your setup doesn't need them.

Changes apply instantly—no restart required.

Troubleshooting

Common issues and fixes:

- **No Connection:** Check vMix IP and ensure Web Controller is enabled in vMix Settings. Firewall may block port 8088.
- **Lights Not Updating:** Confirm tally light IPs and vMix input numbers match. Test network connection.
- **App Not Responding:** Increase latency if on a slow network. Close and reopen the app.
- **No Inputs Shown:** vMix must be running with inputs added. Reconnect if needed.
- **Flash Mode Not Working:** Ensure it's checked and the camera transitions from inactive to live.
- **Preset Errors:** Files must be .txt. If loading fails, check file contents or create a new preset.

Uninstall

1. Go to Control Panel > Programs > Uninstall a program.
2. Find "IP TallyBridge for vMix" and select Uninstall.
3. Delete any leftover files in the installation folder.

No data is stored outside presets you save.

Support and Updates

Updates: Check ikancorp.com/shop/software/ikan-ip-tally-bridge-for-vmix/ for new versions. Download and run the installer to update.

Support: Email support@ikancorp.com for help.

Feedback: Let us know how we can improve—your input shapes future updates!

Enjoy seamless tally integration with Tally Bridge for vMix!

