

INTRODUCTION

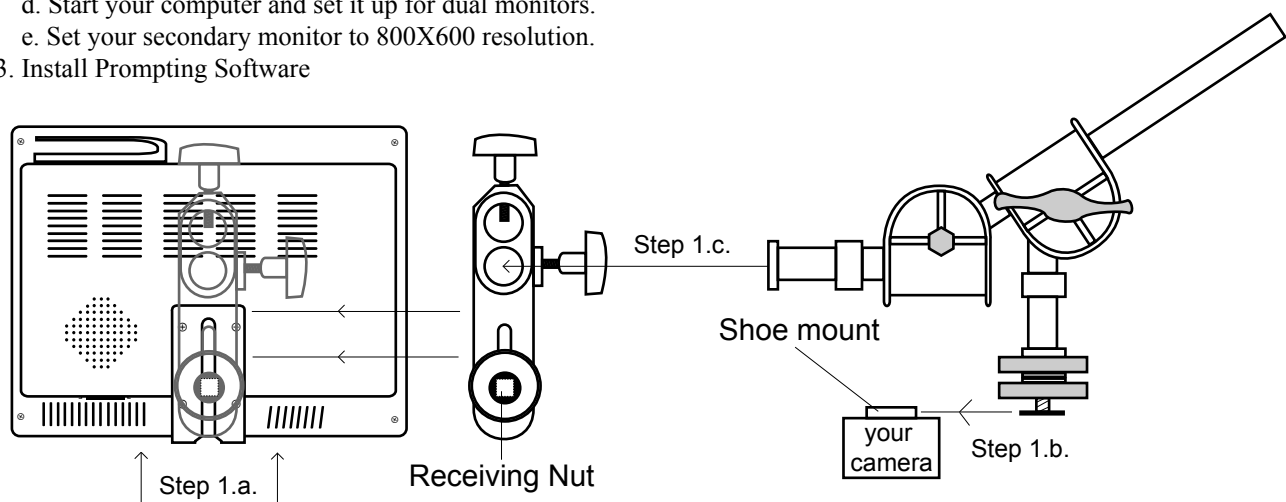
Thank you for purchasing the ikan PT1000W Teleprompter. The PT1000W Teleprompter is extremely easy to use and will quickly become an integral part of your production kit. For more information on this and many other innovative ikan products please visit our website: www.ikancorp.com

PACKAGE CHECK LIST

- V8000Ws Monitor
- A/V Cable
- VGA Cable
- Mounting Rod
- Prompting Software
- Remote Control
- AC Adapter
- Monitor Bracket

GETTING STARTED

1. Mount the Monitor
 - a. Attach the monitor bracket to the back of the monitor, sliding up the Receiving Nut (with the bracket) in the T-channel mount.
 - b. Attach the mounting rod to the shoe mount of your camera.
 - c. Place the end of the mounting rod into the top mounting hole of the monitor bracket and tighten the knob on the top of the bracket to hold it in place.
2. Connect the VGA
 - a. Plug the A/V cable to the bottom of the monitor.
 - b. Connect the VGA cable's mini din connector to the mini din connector on the A/V cable.
 - c. Plug the 15 pin connector of the VGA cable to the secondary monitor port of your computer.
 - d. Start your computer and set it up for dual monitors.
 - e. Set your secondary monitor to 800X600 resolution.
3. Install Prompting Software



CONDITIONS OF WARRANTY SERVICE

- Free service for one year from the day of purchase if the problem is caused by manufacturing errors.
- The components and maintenance service fee will be charged if the warranty period has expired.

Free Service will not be Provided in the Following Situations:

- * Even if the product is still within the warranty period.
- Damage caused by abuse or misuse, dismantling, or changes to the product not made by the company.
- Damage caused by natural disaster, abnormal voltage, and environmental factors etc.

INTRODUCTION

Thank you for purchasing the ikan V8000W LCD Monitor. We know you will be satisfied with our “V” series monitors. Please visit www.ikancorp.com for more information on our current and future products including our award-winning fluorescent studio lights and light accessories.

PACKAGE INCLUDES

- V8000W LCD Monitor
- AC Power Adapter
- DC Adapter
- AV Cable
- VGA Cable
- Table Stand / Wall Mount
- Remote Control

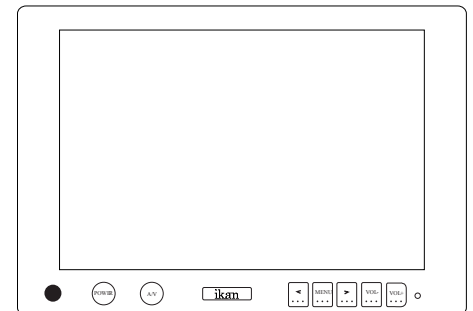


GETTING STARTED

1. Getting power to the monitor.
 - a. Plug the AC adapter into the power input jack located on the right side on the monitor or through the break out cable.
2. Connecting the A/V (audio/Video)
 - a. Plugging up the breakout cable to the right of the monitor gives you many modes for video input. (You can switch from these modes by pressing the “AV” button on the monitor)
3. Connecting The VGA Cable
 - a. Plug the A/V cable to the right of the monitor.
 - b. Connect the VGA cable’s mini din connector to the monitor din connector on the A/V cable.
 - c. Plug the 15 pin connector of the VGA cable to the secondary monitor port of your computer.
 - d. Start your computer and set it up for dual monitors.
 - e. Set your secondary monitor to 800 x 600 resolution.

Video Modes	Description
Video-1	The yellow AV cable is your Video-1
Video-2	The red AV cable is your Video-2
VGA-Mode	Using the VGA cable enables you to use your computer as a video source.

Menu	Access to all the monitor settings “brightness, color, etc.”
>	Toggles through menu.
<	Toggles through menu.
VOL +	Increases the volume of the monitor.
VOL -	Decreases the volume of the monitor.
Power	Powers up the monitor.
AV	Toggles through the different video modes.

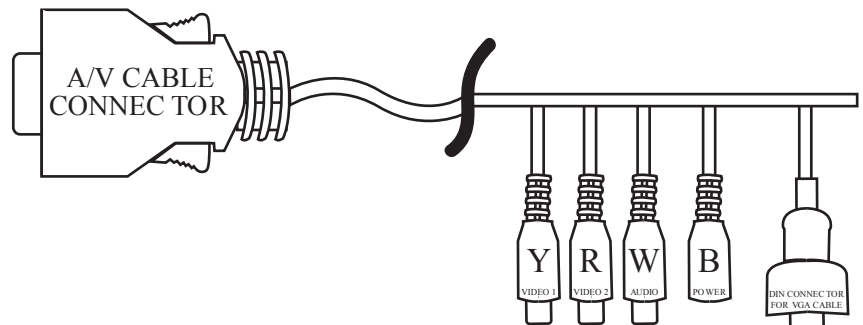


CONDITIONS OF WARRANTY SERVICE

- Free service for one year from the day of purchase if the problem is caused by manufacturing errors.
- The components and maintenance service fee will be charged if the warranty period has expired.

Free Service will not be Provided in the Following Situations:

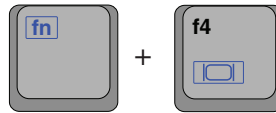
- * Even if the product is still within the warranty period.
- Damage caused by abuse or misuse, dismantling, or changes to the product not made by the company.
- Damage caused by natural disaster, abnormal voltage, and environmental factors etc.



INTRODUCTION

When using the PT1000 you should set up you computer to be in “Clone Mode” or “Mirror Mode”. We do this so the talent can see the exact same thing the teleprompter operator is viewing. In this guide we will go over some of the most common ways of achieving this. Before you start you should make sure you have the last drivers for your video card. You should visit the manufactures website the get these. We will go over the Nvidia , ATI, and Intel way of achieving this as they are what most computers are equipped with.

- 1)Fist thing to do is make sure that the monitor of the PT1000 is plugged in powered on and connected to the VGA port of you computer. (It’s the blue 15 pin connector on the back of your computer)
- 2)The easiest way to set up your computer if you are using a laptop is to use the hot keys. Most laptops have a set of keys you press at the same time to toggle between display modes. In this particular case the key combination is FN and the F4 key. (*see illustration*) You will press these keys until you get the same exact image on the PT1000 that you have on your laptop. The mode we are looking for is “Clone Mode”. Every laptop manufacturer seems to have a different key combination so you should check your user’s manual.



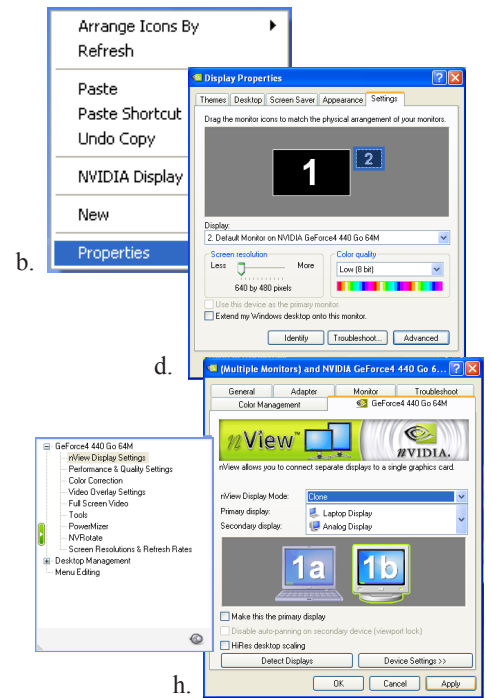
NVIDIA (*see figure 1*)

- 3)If the above step did not work or you are using a desktop computer then we can do it the longer method. (Nvidia)
 - a. Right-Click on your desktop
 - b. Choose properties
 - c. Click on the Settings tab
 - d. Change the resolution of your monitor to 800x600 or 1024x768 and press the apply button.
 - e. Now press the advanced button
 - f. Click on the tab labeled with the word GeForce or the Nvidia logo. (this may look different depending on your graphics card model.)
 - g. Click on “Nview Display Settings” on the left side.
 - h. On the right side choose Clone from the Nview Display Mode drop down box.
 - i. Click on the apply button.
 - j. You should be in clone mode now. Close all open windows.
 - k. You are now ready to start Prompter Pro V2.

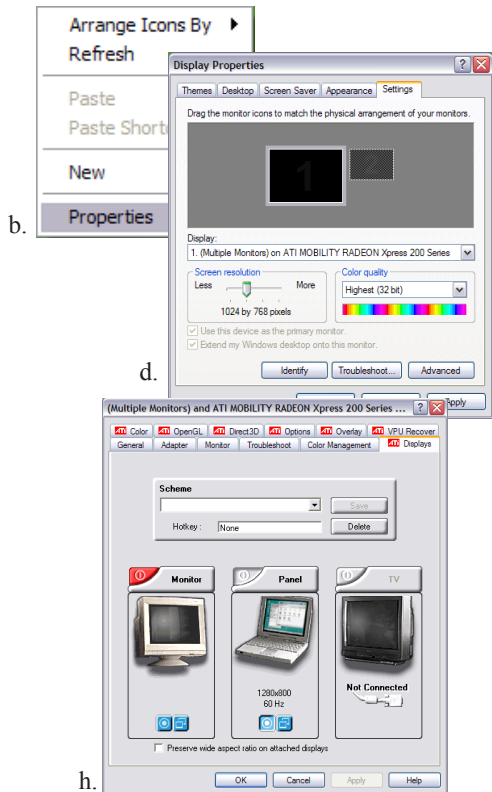
ATI (*see figure 2*)

- 4)If step number 2 did not work or you are using a desktop computer then we can do it the longer method. (ATI)
 - a. Right-Click on your desktop
 - b. Choose properties
 - c. Click on the Settings tab
 - d. Change the resolution of your monitor to 800x600 or 1024x768 and press the apply button.
 - e. Now press the advanced button
 - f. Click on the Tab labeled with an ATI logo and the word “Displays”
 - g. Press the red button to the left of the word monitor. This will “turn on” your second ary monitor (which is the PT1000)
 - h. Press the small blue button with two squares overlapping each other. This is the “Clone Mode” button.
 - i. Now Press the apply button.
 - j. Your are now ready to start Prompter Pro V2.

NVIDIA
(figure 1)



ATI
(figure 2)



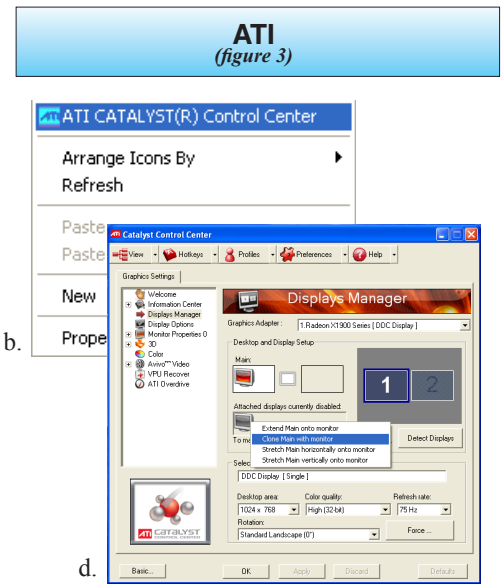
ATI (see figure 3)

- 5) If step number 2 did not work and you do not recognize the steps in step 4 but still have an ATI card and are using a desktop computer then follow these steps:
 - a. Right-Click on the desktop
 - b. Click on the “ATI CATALYST Control Center”
 - c. Click on the Displays Manager option on the left
 - d. Right-Click on the small grey picture of a monitor under the “Attached displays currently disabled” section
 - e. Choose Clone Main with monitor
 - f. Now click apply

INTEL (see figure 4)

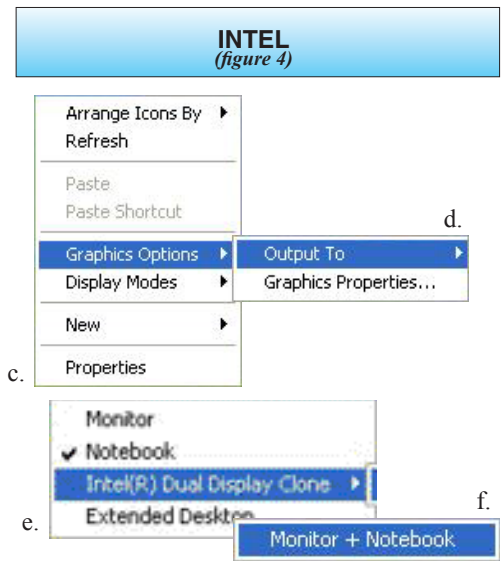
- 6) If step number 2 did not work or you are using a desktop computer then we can do it the longer method. (Intel)
 - a. Make sure you are running at 1024x768 resolution
 - b. Right-Click on the desktop
 - c. Roll your mouse over Graphics Options
 - d. Roll your mouse over Output To
 - e. Roll your mouse over Intel Dual Display Clone
 - f. Click on Monitor + Notebook
 - g. You are now ready to start Prompter Pro V.2

- 7) There is another way to do it on the Intel graphics card:
 - a. Right-Click on your desktop
 - b. Choose properties
 - c. Click on the Settings tab
 - d. Change the resolution of your monitor to 800x600 or 1024x768 and press the apply button.
 - e. Now press the advanced button
 - f. Click on the “Intel Graphics Media Accelerator Driver” button
 - g. Click on the Intel Dual Display Clone button on the left.
 - h. Click on apply.
 - i. You are now ready to start Prompter Pro V.2



b.

d.



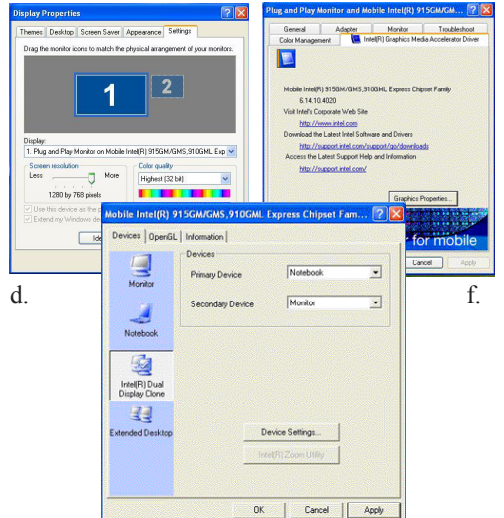
d.

c.

e.

f.

(For Step 7)



d.

f.

For additional help please call the ikan support team at 713-272-8822 or email us at support@ikancorp.com
Office Hours: 9am - 6pm Central Time

Installing Prompter Pro v2.0 on a PC

- Insert the CD in your CD-ROM on your computer.
- Open "My Computer" from your desktop.
- Double-click on "Prompter Pro 2.0" CD icon.
- Open the "Prompter Pro v2.0" folder and double-click on the "PC" folder.
- Double-click on the "Setup" icon.
- Follow the easy installation instructions.

Installing Prompter Pro v2.0 on a MAC

- Insert the CD in your CD-ROM on your computer.
- Double-click on the "Prompter Pro v2.0" icon.
- Open "Prompter Pro v2.0" folder and double click on the "MAC" folder.
- Drag the folder named "Prompter Pro" into your applications folder.
- You are ready to start Prompting!

Setting up Prompter Pro v2.0

If this is the first time installing any version of Prompter Pro you will be prompted to enter a serial number which is provided in the back of the CD case.

Keyboard shortcuts:	
F5	Stop / Start Scroll Up
F6	Stop / Start Scroll Down
F7	Go to top of prompt
F8	Go to end of prompt
F9/ cmd shift+up	Speed Down x10
F10/ cmd shift+dwn	Speed Up x10
F11/cmd+up	Speed Down
F12/cmd+dwn	Speed Up
Ctrl/cmd + O	Open File
Ctrl/cmd + S	Save File
Ctrl/cmd + H	Show / Hide Tool bar
ESC	Close Prompt Window
Up/Down Arrows	Speed Up/Down * Scroll Up/Down
Mouse shortcuts:	
Left Click/ cmd+click	Stop / Start Scroll (Start when tool bar is hidden)
Right Click/ ctrl+click	Show / Hide Tool bar
Mouse Wheel	Speed Up/Down * Scroll Up/Down

Main Menu Options:	
Open File	Allows you to browse you computer for a file.
Show Prompt	Displays the file you are currently working on.
New File	Create a new file for prompting.
Save File	Save the progress of your file.
Demonstration	Puts the software in demonstration mode.
Setup	Allows you to toggle the font and BG color.
Exit	It will exit from the program.

* **(PC)** To change the color of the font simple enter the file that you want to prompt. Then highlight the word or letter and right click on the mouse **(ctrl+click on MAC)** and a color palette will appear.

* Prompter Pro v2.0 supports both RTF files and Text files.

* For any additional questions about Prompter Pro v2.0 please call us at 713-272-8822.