

LOC-3501115

Location Kit - 5 Piece Lighting Kit Package



What's included

- 1 x ID1500 LED Light
- 1 x ID1000 LED Light
- 3 x ID508 LED Light
- 5 x Light Stands
- 1 x IBG-15S
- 1 x IBG-1000 3L
- 2 x Stand Bag

QuickStart Guide:

- ID1500 LED Light QSG
- ID1000 LED Light QSG
- ID508 LED Light QSG

Checked by

CONDITIONS OF WARRANTY SERVICE

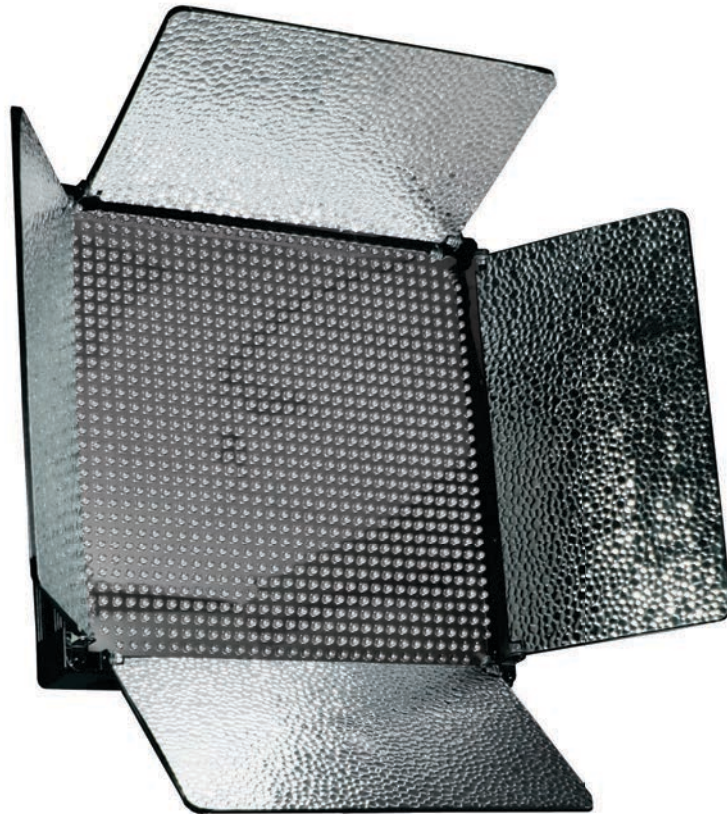
- Free service for one year from the day of purchase if the problem is caused by manufacturing errors.
- The components and maintenance service fee will be charged if the warranty period has expired.

Free Service will not be Provided in the Following Situations: (* Even if the product is still within the warranty period.)

- Damage caused by abuse or misuse, dismantling, or changes to the product not made by the company.
- Damage caused by natural disaster, abnormal voltage, and environmental factors etc.

ID 1000

L.E.D. Light QUICKSTART GUIDE



What's included

- ID 1000 Light
- AC Adapter + Power Cord
- Remote Control

Checked by

CONDITIONS OF WARRANTY SERVICE

- Free service for one year from the day of purchase if the problem is caused by manufacturing errors.
- The components and maintenance service fee will be charged if the warranty period has expired.

Free Service will not be Provided in the Following Situations: (* Even if the product is still within the warranty period.)

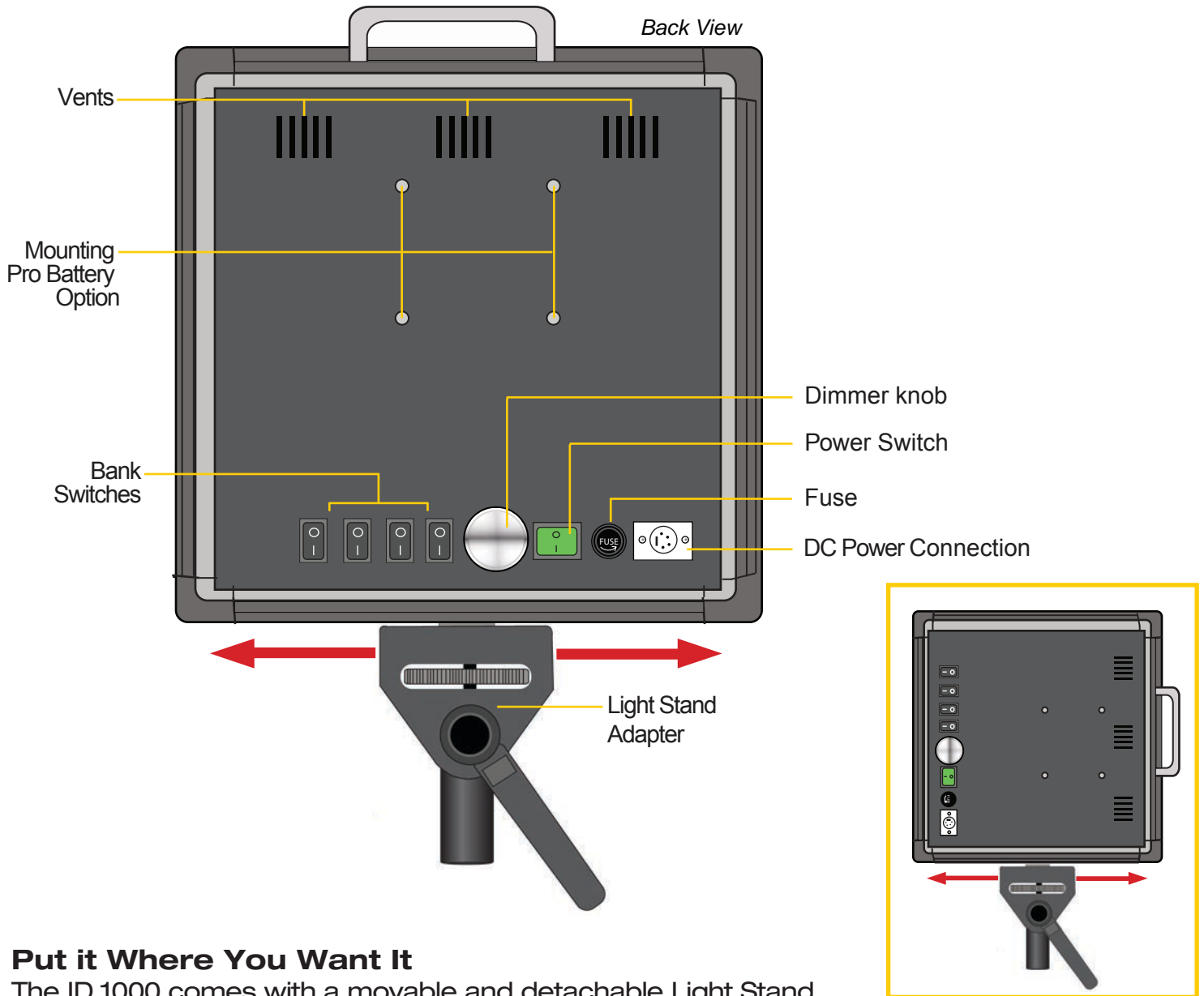
- Damage caused by abuse or misuse, dismantling, or changes to the product not made by the company.
- Damage caused by natural disaster, abnormal voltage, and environmental factors etc.

ID 1000

L.E.D. Light QUICKSTART GUIDE

GETTING STARTED

1. Connect the included AC Adapter to power the ID 1000 light.
2. Turn the light on / off with the Power Switch.
3. Control the amount of the light with the Dimmer knob. Adjust the intensity of the light by turning the Dimmer Knob clock-wise to increase the intensity and counter clock-wise to reduce it.
4. The ID 1000 can also be powered by pro battery (optional accessories).



Put it Where You Want It

The ID 1000 comes with a movable and detachable Light Stand Adapter allowing you to mount your light either horizontally or vertically.

ID 1000

L.E.D. Light QUICKSTART GUIDE



Remote Control features include:

- A. Power On/Off
- B. Press button to adjust 4 levels of light intensity.
Press and hold for 5 seconds to enable/disable sound.
- C. Four level light intensity adjustment from 25%-100%
- D. Dimmable light intensity adjustment from 0%-50%

• Pro Battery Option



Optional Accessories

- V17PBK-S Pro Battery Kit \$149.00
- V17PBK-A Pro Battery Kit \$149.00
- IB-L130A AB Mount Professional Battery \$375.00
- IB-L130S V Mount Professional Battery \$375.00

ID508

508 LED Light QUICKSTART GUIDE



What's included

- | | |
|--------------------------------------------------|----------------------------------------------|
| <input type="checkbox"/> ID508 LED Light | <input type="checkbox"/> Soft Carrying Case |
| <input type="checkbox"/> AC Adapter | <input type="checkbox"/> LM-01 Stand Adapter |
| <input type="checkbox"/> Sony "L" DV Battery (2) | <input type="checkbox"/> Diffusion Filter |
| <input type="checkbox"/> DV Battery Charger | |

Checked by

CONDITIONS OF WARRANTY SERVICE

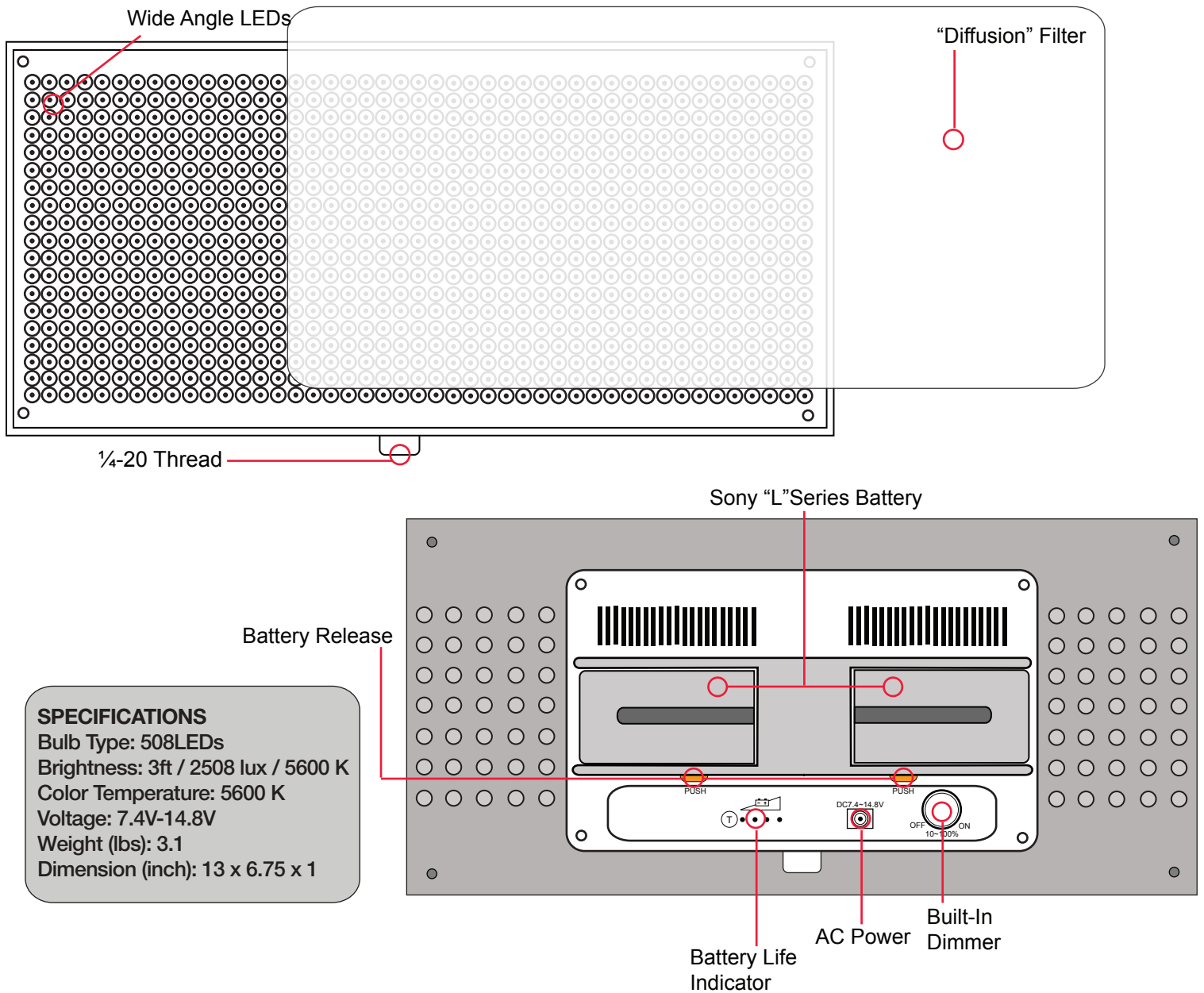
- Free service for one year from the day of purchase if the problem is caused by manufacturing errors.
- The components and maintenance service fee will be charged if the warranty period has expired.

Free Service will not be Provided in the Following Situations: (* Even if the product is still within the warranty period.)

- Damage caused by abuse or misuse, dismantling, or changes to the product not made by the company.
- Damage caused by natural disaster, abnormal voltage, and environmental factors etc.

ID508

508 LED Light QUICKSTART GUIDE



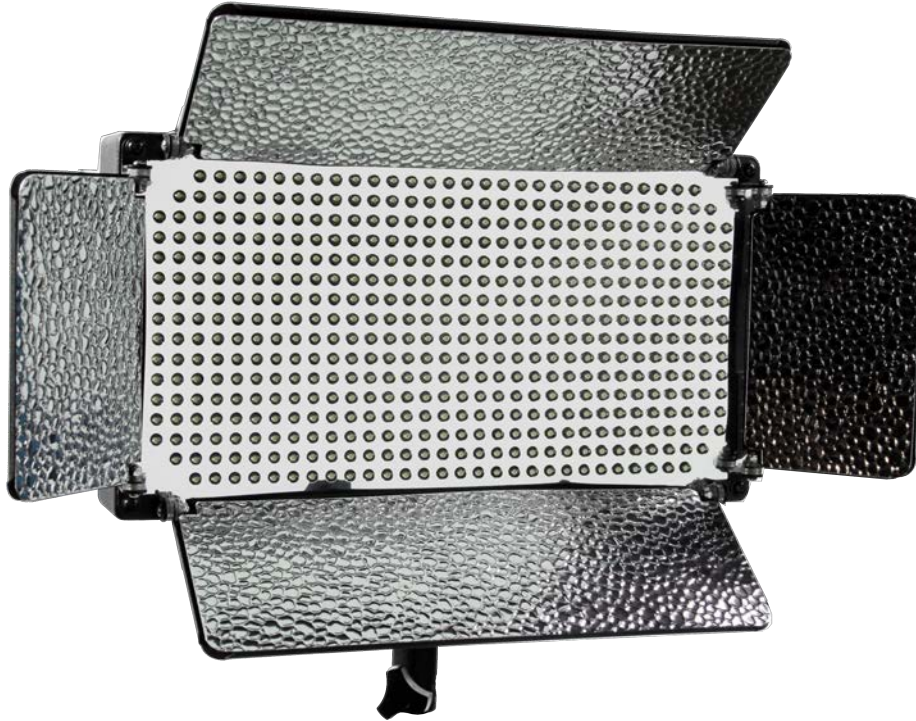
Notes:

Due to the way the Sony L 500 Series and 300 series batteries are designed, Sony MP-F330/F570/F550 batteries will not work on the left battery slot of the ID508.

When the battery indicator shows only one dot, we highly recommend switching out the battery. Allowing the battery indicator to go below one dot may result in low voltage abnormalities that may cause random LEDs to shut off.

ID 500

L.E.D. Light QUICKSTART GUIDE



What's included

- ID 500 Light
- AC Adapter + Power Cord
- Remote Control

Checked by

CONDITIONS OF WARRANTY SERVICE

- Free service for one year from the day of purchase if the problem is caused by manufacturing errors.
- The components and maintenance service fee will be charged if the warranty period has expired.

Free Service will not be Provided in the Following Situations: (* Even if the product is still within the warranty period.)

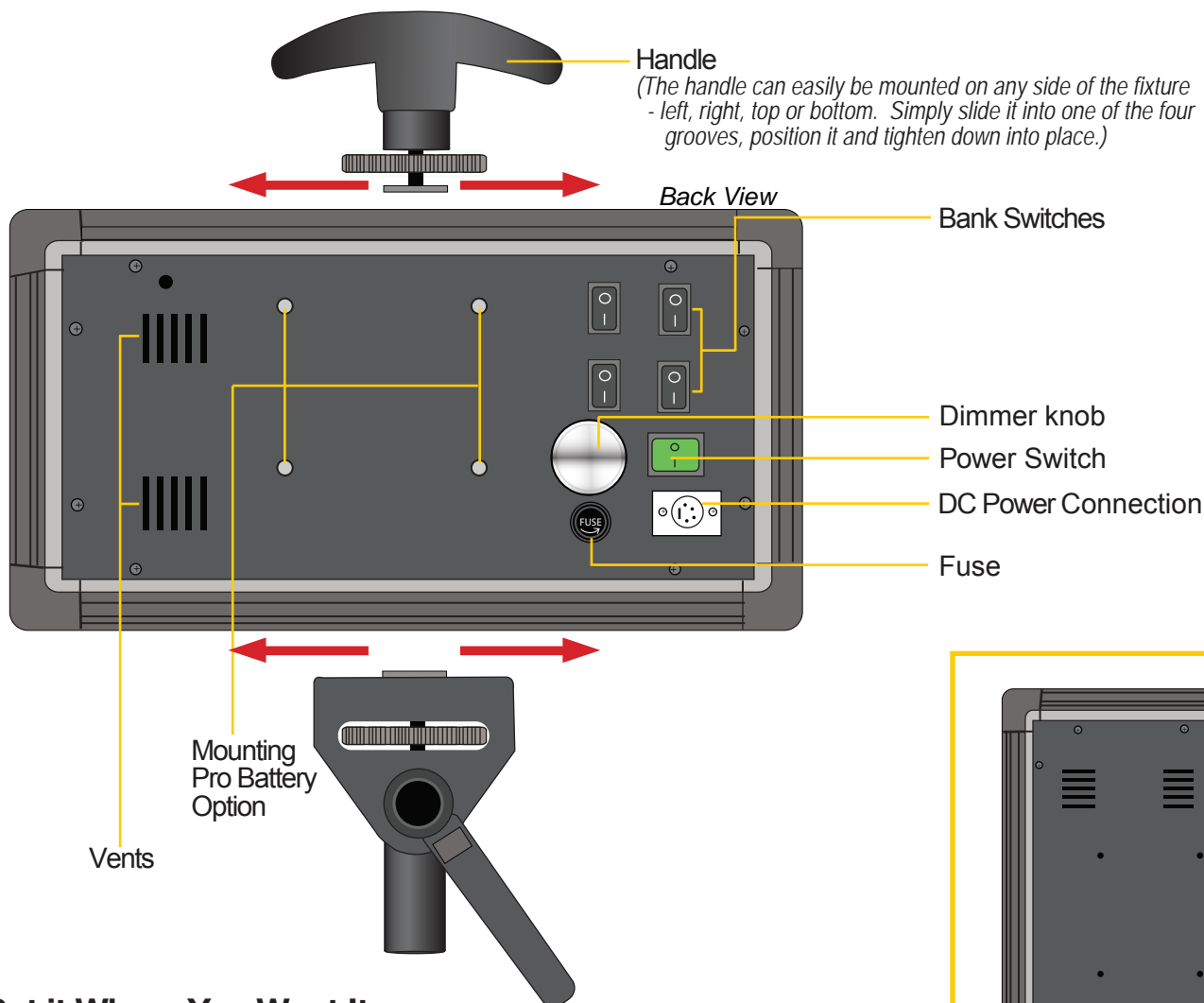
- Damage caused by abuse or misuse, dismantling, or changes to the product not made by the company.
- Damage caused by natural disaster, abnormal voltage, and environmental factors etc.

ID 500

L.E.D. Light QUICKSTART GUIDE

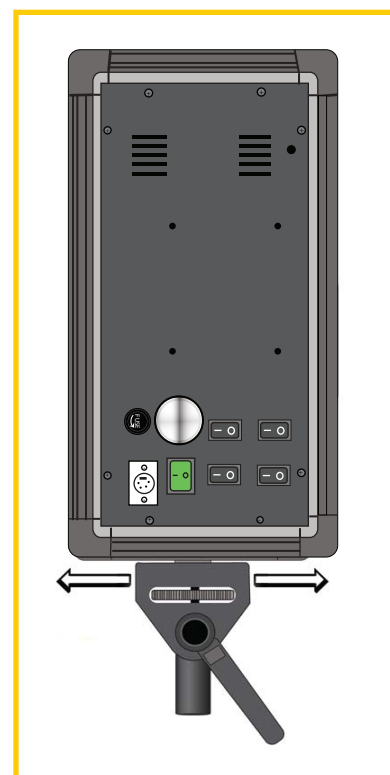
GETTING STARTED

1. Connect the included AC Adapter to power the ID 500 light.
2. Turn the light on / off with the Power Switch.
3. Control the amount of the light with the Dimmer knob. Adjust the intensity of the light by turning the Dimmer Knob clock-wise to increase the intensity and counter clock-wise to reduce it.
4. The ID 500 can also be powered by pro battery (optional accessories).



Put it Where You Want It

The ID 500 comes with a movable and detachable Light Stand Adapter allowing you to mount your light either horizontally or vertically.

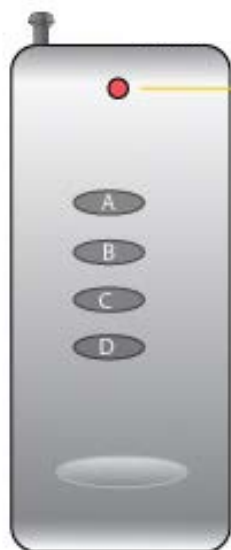


ID 500

L.E.D. Light QUICKSTART GUIDE

SPECIFICATIONS

Operating Volts:	12v - 14.4v
Wattage:	30w
Brightness:	2.55Klux/50cm
Color Temperature:	5600K
Dimension:	13.8" x 7.5" x 2.7"
Weight (lbs):	5.8



Operation
Indicator
On/Off

Remote Control Buttons

A. Power On/Off

Press and hold for 5 seconds to sync remote control to light.

B. Press button to adjust 4 levels of light intensity.

Press and hold for 5 seconds to enable/disable sound.

C. Hold down to increase light intensity

D. Hold down to decrease light intensity

• Pro Battery Option



Optional Accessories

- V17PBK-S Pro Battery Kit \$149.00
- V17PBK-A Pro Battery Kit \$149.00
- IB-L130A AB Mount Professional Battery \$375.00
- IB-L130S V Mount Professional Battery \$375.00

ID 500

L.E.D. Light QUICKSTART GUIDE

ID 500 LUX Drop Off

