

IB500

500 Dual Color LED Studio Light QUICKSTART GUIDE



What's included

- IB500 LED Light
- AC Adapter + Power Cord
- Light Stand Adapter
- Handle
- Remote Control

Checked by

CONDITIONS OF WARRANTY SERVICE

- Free service for one year from the day of purchase if the problem is caused by manufacturing errors.
- The components and maintenance service fee will be charged if the warranty period has expired.

Free Service will not be Provided in the Following Situations: (* Even if the product is still within the warranty period.)

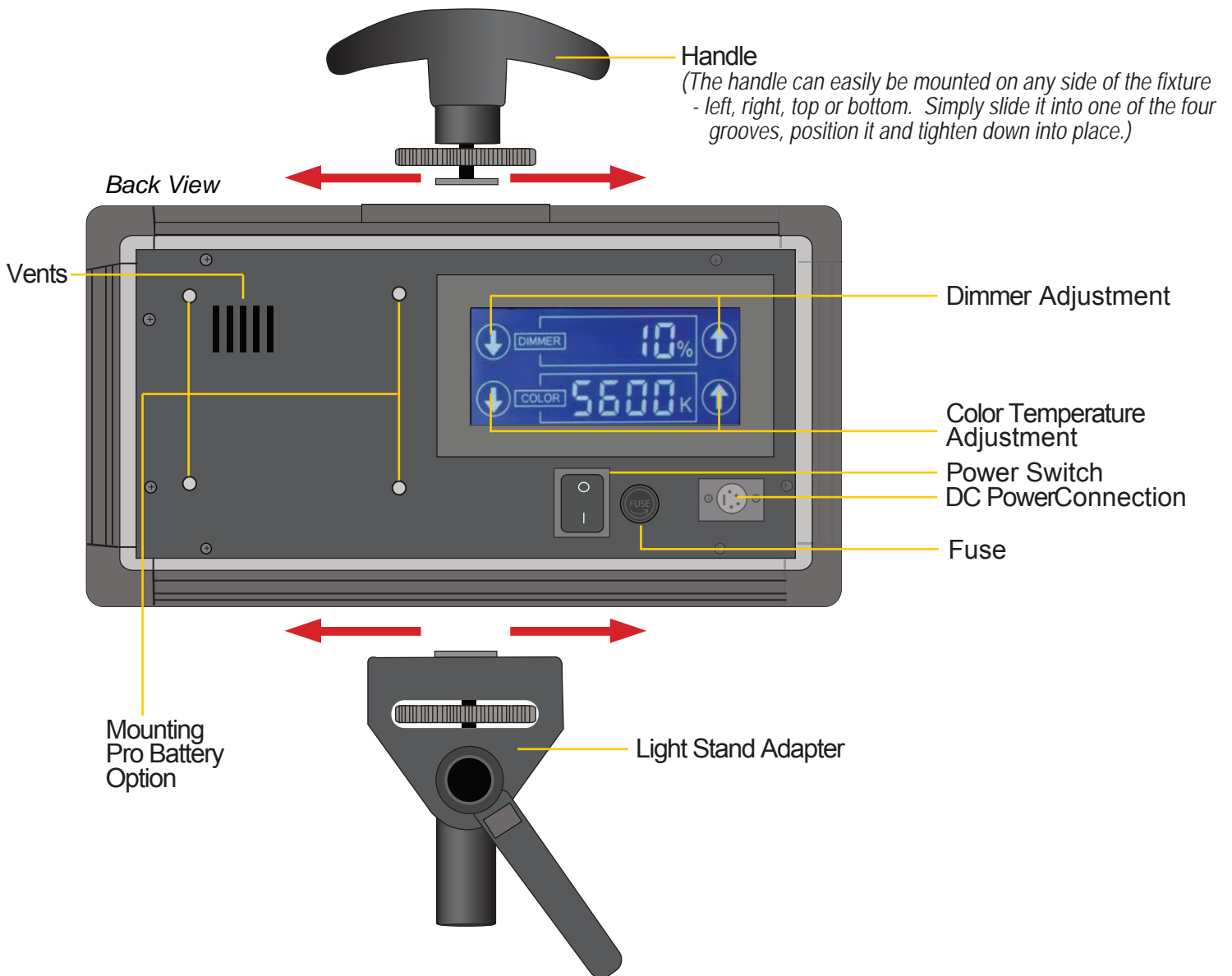
- Damage caused by abuse or misuse, dismantling, or changes to the product not made by the company.
- Damage caused by natural disaster, abnormal voltage, and environmental factors etc.

IB500

500 Dual Color LED Studio Light QUICKSTART GUIDE

GETTING STARTED

1. Connect the included AC Adapter to power the IB500 light.
2. Turn the light on / off with the Power Switch.
3. Control the intensity of the light by adjusting the DIMMER up and down on the LCD control panel.
4. Control the color temperature of the light by adjusting the COLOR up and down on the LCD control panel.
5. The IB500 can also be powered by pro battery (optional accessories).



IB500

500 Dual Color LED Studio Light QUICKSTART GUIDE

Put it Where You Want It

The IB500 comes with a movable and detachable Light Stand Adapter and Handle allowing you to mount your light either horizontally or vertically.



SPECIFICATIONS

Operating Volts:	12v - 14.4v
Brightness:	3ft/2002 lux/3200 K
Color Temperature:	3200K - 5600K
Dimension:	13.8" x 7.5" x 2.8"
Weight (lbs):	6.1

ikan

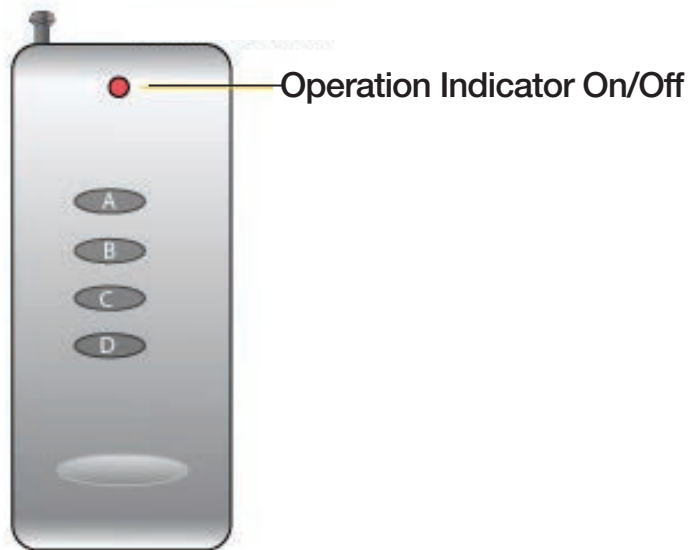
www.ikancorp.com

713-272-8822

IB500

500 Dual Color LED Studio Light QUICKSTART GUIDE

Remote Control



Remote Control Button Functions

Press and hold (A) for 5 seconds to sync remote control to light

Press and hold (A) and (B) to power On/Off

Hold down (A) to increase light intensity

Hold down (B) to decrease light intensity

Hold down (C) to increase color temperature

Hold down (D) to decrease color temperature

Press and hold (C) and (D) for 5 seconds to enable/disable sound

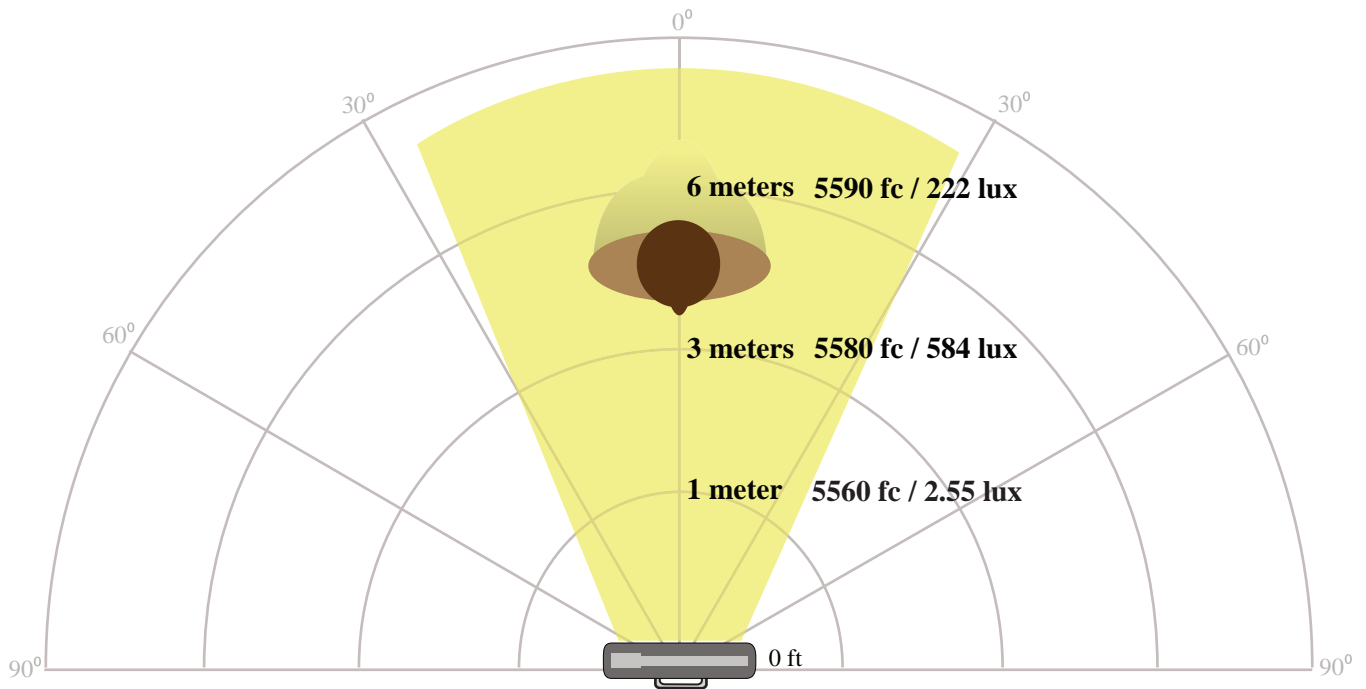
IB500

500 Dual Color LED Studio Light QUICKSTART GUIDE

IB500 LUX Drop Off

The right amount of light

The IB500 lux drop off (Horizontal)



IB500 LUX Drop Off

The right amount of light

The IB500 lux drop off (Vertical)

