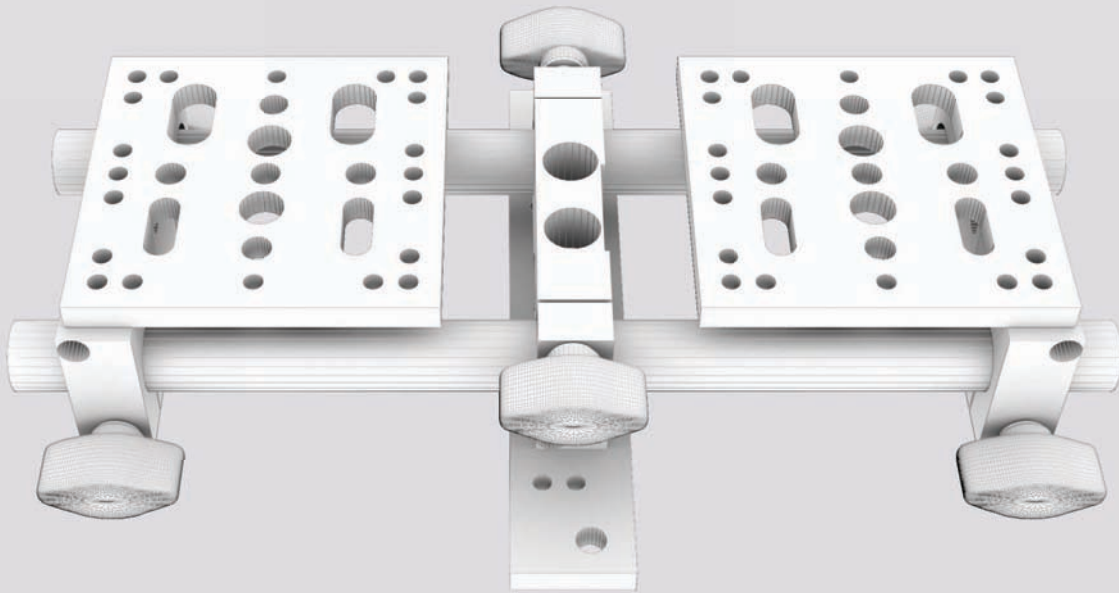


# ELE-SB2

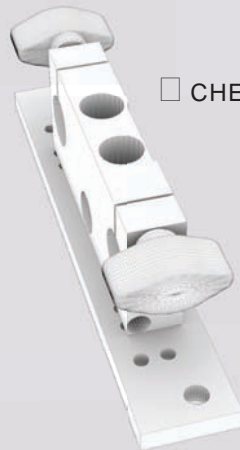
## (Basic Stereoscope) QUICKSTART GUIDE



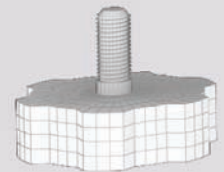
### Whats included



□ 2 x ELE-PT & ELE-15RM



□ CHES-SR & ELE-15RM



□ 2 x Rosette

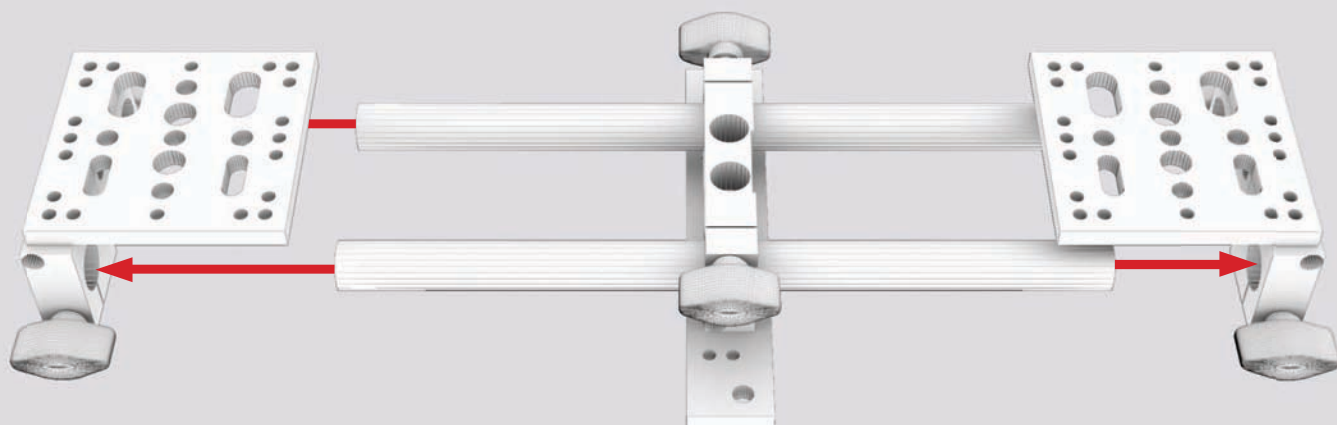


□ 2 x ELE-15R12

Checked by

# ELE-SB2

## (Basic Stereoscope) QUICKSTART GUIDE



# ELE-SB2

## (Basic Stereoscope) QUICKSTART GUIDE



### CONDITIONS OF WARRANTY SERVICE

- Free service for one year from the day of purchase if the problem is caused by manufacturing errors.
- The components and maintenance service fee will be charged if the warranty period has expired.

Free Service will not be Provided in the Following Situations: (\*\* Even if the product is still within the warranty period.)

- Damage caused by abuse or misuse, dismantling, or changes to the product not made by the company.
- Damage caused by natural disaster, abnormal voltage, and environmental factors etc.