



What's Included

- 1 x EV3 Baseplate
- 2 x 12" 15mm Aluminum Rods
- 1 x FG Follow Focus Cine-Kit (*ELE-FGK*)

CHECKED BY

ikan

www.ikancorp.com

support@ikancorp.com

713.272.8822

© 2015 ikan Corporation. All rights Reserved

Getting to know your Quick-Release Baseplate

EV3 Quick-Release Baseplate

The EV3 baseplate system enables you to quickly and efficiently mount and dismount your camera - Simply press one level and the quick-release button.

Anti-Rotation plate prevents your camera from rotating out of alignment.



Height Adjustable

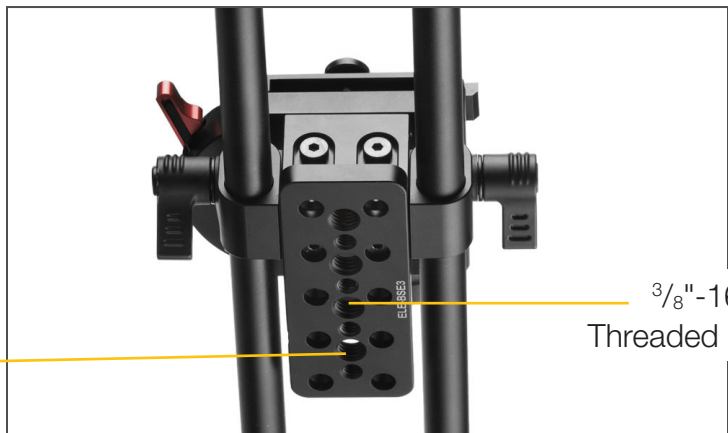
Use the riser plate to adjust the height of the baseplate to adapt to different cameras.



Integrated Tripod Mount

Four 1/2"-20" & four 3/8"-16 thread holes line the bottom of the tripod mount for various mounting options.

1/2"-20
Threaded Holes

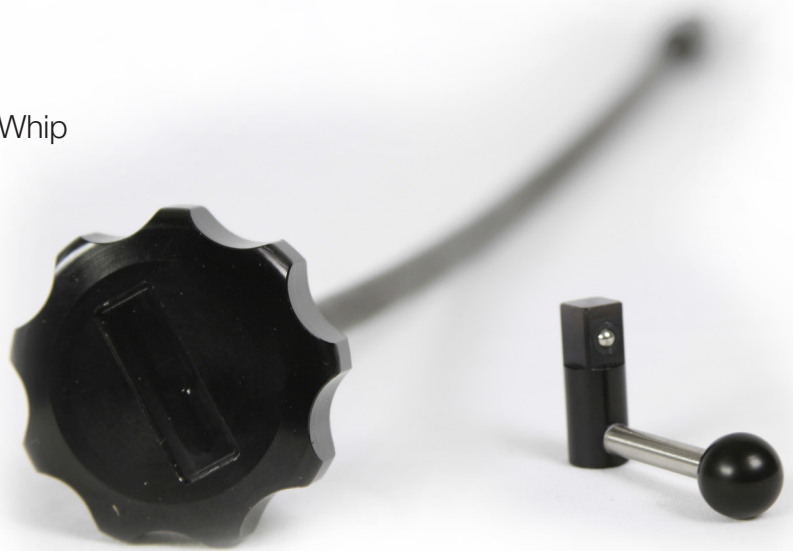


3/8"-16
Threaded Holes

Getting to Know your Follow Focus

Reaching Out

The included 17" FG Follow Focus Whip features vinyl covering and a crank stability grip for smooth control. Utilizing a standard $\frac{3}{4}$ " square connector, the FG Whip provides leverage over distance and smoother focus pulls all around.



Crank It Up

Our 2.3 FG Follow Focus Crank Knob provides rapid focus, allowing you to move from focus mark to focus mark at a high rate of speed. Fitted with standard size square connector, the FG Crank Knob offers fast and accurate control.



Get It In Gear

Also in the box is a pair of 2.5 to 4.25" diameter adjustable zip lens gears. Complete with two no-scuff, non-slip gear liners; your DSLR lens is protected and ready to pull focus.



Getting Started



Adjust FG Follow Focus vertically to slide away or towards the lens, depending on the barrel width.

This is an example of the basic completed Follow Focus application.



Follow Focus Specifications

Follow Focus Specifications	
Dimensions	12.25 x 7 x 4.375 In.
Weight	1

Rig Specifications

EV3 Baseplate Specifications	
Weight	1.15 lbs
Baseplate Type	Quick Release
Rod Compatibility	15 mm
Rod Spacing	60 mm
Tripod Mounting	4 x 1/4"-20 Threaded Holes 4 x 3/8"-16 Threaded Holes 1 x 1/4"-20 Threaded Screw
Camera Compatibility	DSLR, Mirrorless DSLR, Micro 4/3, Small Camcorders
Material	Aluminum

Rod Specifications		12 Inch
Rod Type		Standard
Rod Diameter		15 mm
Rod Length		12 In.
Weight		0.14 lbs
Quantity		1
Material		Aluminum

Shipping Specifications	
Shipping Dimensions	14 x 12 x 6 In.
Shipping Weight	4 lbs

Learn More

More dynamic information at official website: www.ikancorp.com

Support

Contact email: support@ikancorp.com

CONDITIONS OF WARRANTY SERVICE

- Free service for one year from the day of purchase if the problem is caused by manufacturing errors.
- The components and maintenance service fee will be charged if the warranty period is expired.

Free Service will not be Provided in the Following Situations:(*Even if the product is still within the warranty period.)

- Damage caused by abuse or misuse, dismantling, or changes to the product not made by the company.
- Damage caused by natural disaster, abnormal voltage, and environmental factors, etc.