

# OBM Broadcast Monitors



12G-SDI 4K / 3G-SDI Quad Link / HDR / SFP

Picture-by-Picture / Custom 3D LUT Import / Camera Log



Ver 17.6



**POSTIUM KOREA** Co., Ltd.  
[www.postium.com](http://www.postium.com)

Since its founding in 1999, the Seoul based Postium Korea has been a trusted supplier of professional broadcast, movie and studio equipment to many companies around the globe. For over ten years, we've combined our technology and expertise with the feedback from our customers to develop, engineer and manufacture our own LCD rack monitors which are now widely used by many broadcasting stations and OB vans worldwide. Our 17", 24", 31", 55" 4K HDR monitors remain one of the world's best thanks to their unique and innovative features. Furthermore, we've recently developed and started the shipping of several of our range of new products such as the versatile dual and quad monitoring solutions which have a range of 18.5" to 55". We understand the pressures facing today's professionals and the level of support. Hence with our elite and exclusive lines, we are here to take the load off our customers by delivering matching solutions to the customer's technical, creative and budgetary objectives with the best and latest technology available. We remain committed to providing total solutions for the next generation of broadcasting displays, sharing the success with our partners and becoming the global leader in field of Broadcast Monitors. For over 10 years, Postium played a significant role in providing broadcasting equipment to companies worldwide and we definitely intend to continue this role of ours and deliver on our commitments for the decades to come.

## **OBM U Series 4K HDR**

### **4K LCD Professional Monitors with 12G-SDI Single Link, Quad Link 4K**

The OBM 4K series incorporates 12G-SDI input and loopout(x2), 3G/HD-SDI input and loopout(x2), HDMI 2.0 input, and SFP optical connector.

The OBM 4K series accepts up to 3840x2160/24,25,30,50,60p and 4096x2160/24.25.30,50,60p signals.

These new 4K series provides the function to display the HDR(High Dynamic Range) footage, and supports a wide color gamut conforming to DCI-P3 and most of the ITU-R BT.2020 standard. The OBM 4K series offers the professional performance, including excellent quality black performance, accurate color reproduction, which make these monitors ideal for 4K live production, versatile monitoring and field production applications. In addition, the OBM 4K series supports the integrated 3D LUT, Waveform, Vector Scope, Color Space & Gamma Comparison, and a full feature set.

## **OBM W Series 4K HDR**

### **4K Wall Monitor for Studio and OB Van with 12G-SDI**

The OBM W series incorporates 12G-SDI input and loopout(x2), HDMI 2.0 input, SFP optical connector, Component and Composite on the panel of full HD resolution. So, the OBM W series is ideal for building up a 4K monitor wall in the studio or OB van. The OBM W series offers the advanced and convenient features such as HDR(High Dynamic Range), Ethernet Control, Camera Log display, etc.

## **OBM P Series**

### **True Dual Monitoring Solutions**

The OBM P series incorporates the dual scaler, which enables to display the two different SDI signals on the screen. And, the OBM P series can display Waveform and Vector Scope on the two different SDI videos respectively, which is very useful and convenient for dual monitoring.

Postium's OBM P series offers the superior picture quality and wide viewing angle, and includes an array of professional features and the advanced audio & video signal analysis functions. The OBM P series is equipped with various I/O interfaces such as 3G-SDI, HDMI, Component, Composite.

## **OBM N Series**

### **Outstanding Picture Quality**

The OBM N series offers the superior picture quality and wide viewing angle, and includes an array of professional features and the advanced audio & video signal analysis functions including Waveform, Vector Scope, Audio Level Meter, IMD, Camera Log Slection, Custom 3D LUT Import, Focus Assist, etc. The OBM N series are equipped with various I/O interfaces such as 3G-SDI, HDMI, Component, Composite, DVI.

The wide model lineup from 18.5" up to 55" provides the best solutions from the field production to monitoring in studio.

## OBM Monitor Model Guide For Choice

Series		U Series (4K Precision Monitors)	W Series (4K Wall Monitors)	P Series (PBP Monitors)	N Series (3G Monitors)
Items					
Key Features		12G-SDI 2ch In HDMI 2.0 In 2SI/SQD, HDR Camera Log Ethernet In Wide Color Space SFP Module 4K W/F and V/S	12G-SDI 2ch In HDMI 2.0 In SFP Module HDR Camera Log W/F and V/S Ethernet In	Picture by Picture Dual W/F and V/S 3G-SDI 2ch In HDMI 1.3a In HDR Camera Log Ethernet In	3G-SDI 2ch In HDMI 1.3a In HDR Camera Log Ethernet In W/F and V/S
Input	12G-SDI	● 12G x 2	● 12G x 2	—	—
	3G-SDI	● 3G x 2	—	● 3G x 2	● 3G x 2
	DVI	—	—	—	●
	HDMI	● 2.0 x 1	● 2.0 x 1	● 1.3a x 1	● 1.3a x 1
	YPbPr	—	●	●	●
	CVBS	—	●	●	●
	SFP	●	●	—	—
Output	SDI	● 12G x 2, 3G x 2	● 12G x 2	● 3G x 2	● 3G x 2
Audio In	Embedded Audio	●	●	●	●
	Analog Stereo (Phone Jack)	● Up to 32"	●	●	●
Audio Out	Analog Stereo (Phone Jack)	●	●	●	●
	Internal Speaker	● Up to 32"	● Up to 32"	● Up to 32"	● Up to 32"
DC In	4 Pin XLR	● Up to 32"	● Up to 32"	● Up to 32"	● Up to 32"
	REMOTE	●	●	●	●
	USB	●	●	●	●
	RS-422GPI (RJ45) In/Out	●	●	●	●
	Tally	● Up to 32"	● Up to 32"	● Up to 32"	● Up to 32"
Control	Ethernet Throughout	●	—	—	—



Series		U Series (4K Precision Monitors)	W Series (4K Wall Monitors)	P Series (PBP Monitors)	N Series (3G Monitors)
Items					
4K Multi-Input Mode	Dual Link 2SI	●	●	—	—
	Quad Link 2SI	●	—	—	—
	Quad Link Square	●	—	—	—
Functions	12G-SDI	●	●	—	—
	3G-SDI Level A/B	●	●	●	●
	HDR (High Dynamic Range)	●	●	●	●
	HDR Waveform/Vectorscope	●	●	●	●
	SDR Waveform/Vectorscope	●	●	●	●
	Color Space Compare	●	—	—	—
	Camera Log	●	●	●	●
	Camera Log Mapped SDI Loopout	●	●	●	●
	Picture By Picture (PBP)	—	—	●	—
	Fast Mode	—	—	●	●
	F/W Update with USB	●	●	●	●
	1:1 Pixel Mapping	●	●	●	●
	Audio Level Meter Display(16ch)	●	●	●	●
	Blue Only/Mono Only	●	●	●	●
	Focus Assist	●	●	●	●
	H/V Delay	●	●	●	●
	Key Lock	●	●	●	●
	Marker	●	●	●	●
	Zebra	●	●	●	●
	Time Code Display	●	●	●	●
	IMD	—	●	●	●
	Aspect	●	●	●	●
	Freeze	●	●	●	●
	Closed Caption	●	●	●	●
	Internal Pattern Disply	●	●	●	●
	System Data Copy	●	●	●	●
	Password Lock	●	●	●	●
Calibration	3D LUT	●	●	●	●
	Gamma	●	●	●	●
	3rd Party 3D LUT Import	●	●	●	●
	Color Calibration Utility	●	●	●	●
Input Signal Format	SMPT ST 2082	2160p(60/59.94/50)		—	—
	SMPT ST 2081	2160p(30/29.97/25/24/23.98)		—	—
	SMPT ST 425-AB	1080p(60/59.94/50/30/29.97/25/24/23.98/30sF/29.97sF/25sF/24sF/23.98sF), 1080i (60/59.94/50)			
	SMPT ST 274	1080p(30/29.97/25/24/23.98/24sF/23.98sF), 1080i (60/59.94/50)			
	SMPT ST 296	720p(60/59.94/50)			
	SMPT ST 260	1920 x 1035i(60/59.94)			
	SMPT ST 2048	2048 x 1080p(24/23.98/24sF/23.98sF)			
	SMPT ST 125	480i(59.94)			
	ITU-R BT.656	576i(50)			
	HDMI	2.0 (~ 2160p(50/60))		1.3a (~ 1080p(50/60))	
	SFP	12Gbps, 6Gbps, 2.970Gbps, 1.485Gbps, 270Mbps		—	—

### Versatile 4K/QFHD Input Capability (OBM-U Series)

The OBM U series is equipped with standard 12G-SDI input interface(x2) , 3G/HD-SDI input interface(x2) and support 4K Quad Link 2-Sample Interleave signals and 4K Quad Link Square Division signals.

The OBM U series can accept up to 3840x2160/24,25,30,50,60p and 4096x2160/24.25.30,50,60p signals.



### 4K Waveform Monitor and Vector Scope Display (OBM-U/W Series)

These features enable users to monitor sources using the internal Waveform and Vector Scope. Waveform Wide mode\* is supported, and both Waveform and Vector Scope can be displayed simultaneously.



\*OBM-U170 model is only supported.

### High Dynamic Range(HDR) Display Function (OBM-U/W/P/N Series)

The OBM series provides the function to display the High Dynamic Range footage.

Postium HDR function allows users to view both highlights and shadow detail of scenes at the same time, thus resulting in more natural and realistic images.

The OBM series supports PQ EOTF (SMPTE ST 2084), Hybrid Log Gamma and S-Log3.



OBM-HDR provides the function of comparing HDR and SDR(Standard Dynamic Range) on the displayed image on the OBM series simultaneously.

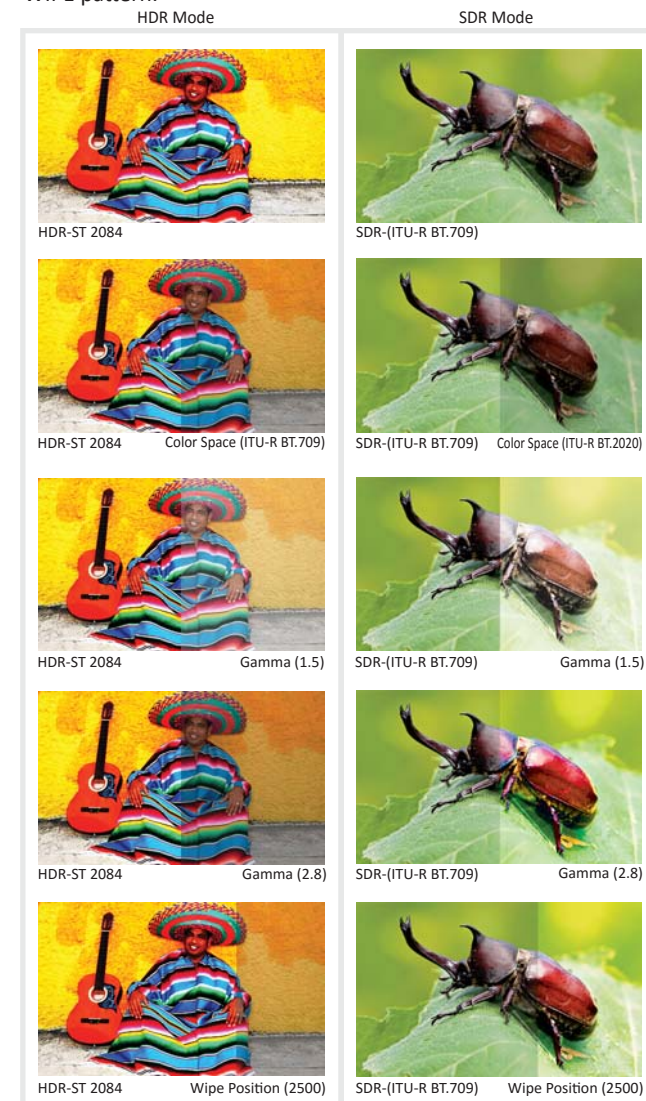


### Fast Mode (OBM-P/N Series)

This function minimizes the interlaced video processing time delay. This mode is also useful when displaying fast-motion interlaced video content and when reducing the delay between video and audio.

### Color Space & Gamma Comparison (Side by Side, Wipe position) (OBM-U/W Series)

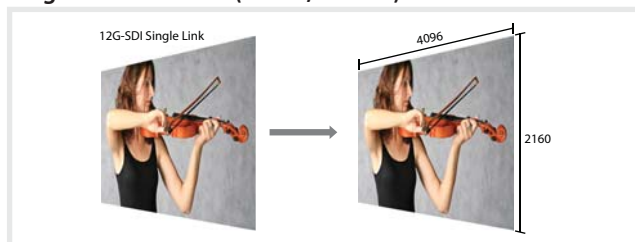
This unique function allows users to compare the two different color spaces, gammas, color temperature, camera logs and any other color settings side by side simultaneously. The area of the two pictures to be displayed can be selected using a vertical WIPE pattern.





## Various 4K/12G Display Modes

### Single Link 12G-SDI (OBM-U/W Series)

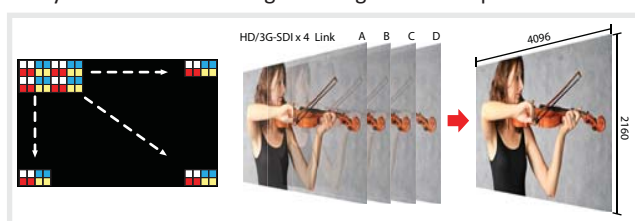


### Dual Link 2-Sample Interleave(2-SI) (OBM-U/W Series)



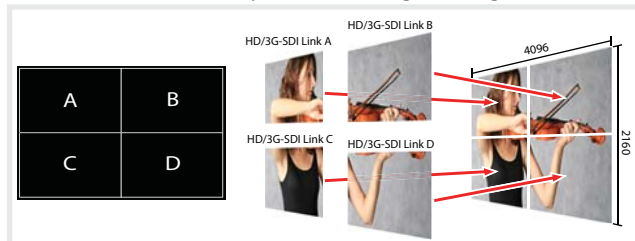
### Quad Link 2 Sample Interleave (2SI) (OBM-U Series)

Each link contains a full image at 1/4 resolution. 2SI mode uses four Sub-image and alternates the samples every two pixels and every line instead of slitting the image into four quadrants.



### Quad Link Square Division (OBM-U Series)

Each link contains one square of the original image.



## Adjustable Gamma (OBM-U/W/P/N Series)

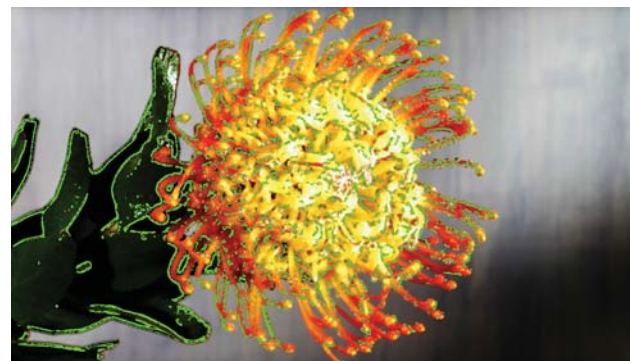
Gamma value is adjustable from 1.0 to 3.0 as user's preference to monitor in the dark area of the picture.

Any pictures taken in either light or dark environment can be easily watched or analyzed.



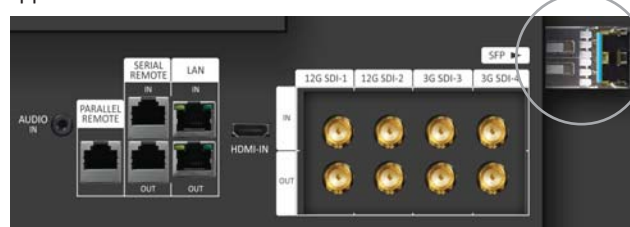
## Focus Assist (OBM-U/W/P/N Series)

This function controls the aperture level of a video signal, and displays images on screen with sharpened edges to help camera focus operation.



## SFP Optical Connector (OBM-U/W Series)

The OBM U and W series have the SFP interface, which allows to use the various SFP modules which can fit any possible broadcast applications.

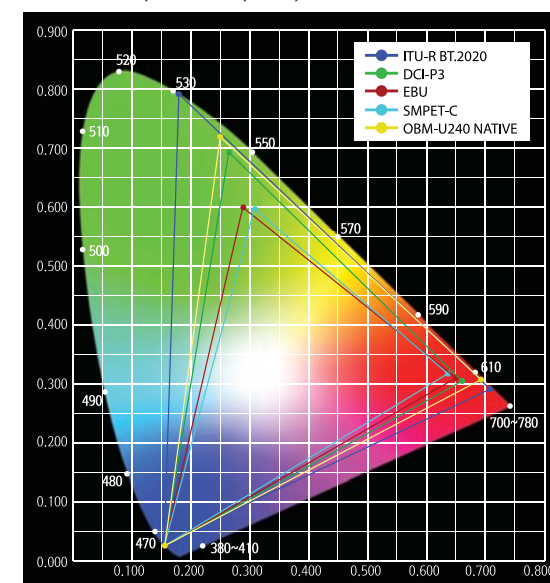


## Wide Color Space Supporting DCI-P3 and ITU-R BT.2020

(OBM-U Series)

The wide color gamut and the advanced 3D LUT function enable the OBM series to reproduce various color spaces accurately and the excellent grayscale.

You can select from color gamuts such as DCI-P3, ITU-R BT.2020, ITU-R BT.709, SMPTE-C, EBU, Native.



## Zebra (OBM-U/W/P/N Series)

This function displays the Luma(Y') level of the input image in zebra pattern.



### Camera Log Selection (OBM-U/W/P/N Series)

The OBM series has the built-in camera LUT of the various camera manufacturers. It allows users to load the following camera logs.

Log-C, C-Log / S-Log2, S-Log3 / J-Log1

The more camera LUTs will be updated.

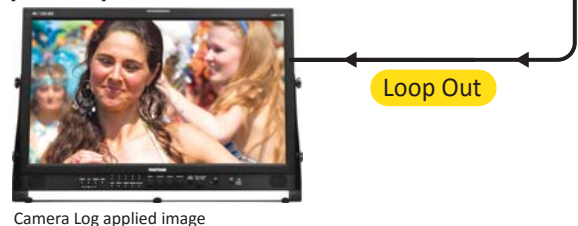
### Camera Log Mapped SDI Loopout (OBM-U/W/P/N Series)

This function allows to load the camera log to the original image and then send the camera log mapped image to another monitor through SDI loop out.

[Monitor 1]



[Monitor 2]



### Remote Control via Ethernet (OBM-U/W/P/N Series)

The OBM series can be connected via Ethernet connection and controlled remotely on the network.



### Closed Caption (OBM-U/W/P/N Series)

The OBM series can display closed captions with an SDI input. It supports the CEA-708(HD-SDI closed captioning standard) and CEA-608(SD-SDI closed captioning standard).

### Waveform & Vector Scope Position Changeable (OBM-P/N Series)

The position of Waveform and Vector Scope can be changed among Left Top, Right Top, Right Bottom, Left Bottom.



### Waveform, Vector Scope Size Adjustable (OBM-P/N Series)

The image size of Waveform and Vector Scope can be changed between Small and Large.



Waveform, Vector Scope - Large

Waveform, Vector Scope - Small

### System Date Copy (OBM-U/W/P/N Series)

This function allows users to save the monitor configuration and adjustment settings on the USB memory stick and load them to other monitors. This is useful for multiple monitor systems, allowing the transfer of one monitor's setup and adjustment data to another.

### Various Markers (OBM-U/W/P/N Series)

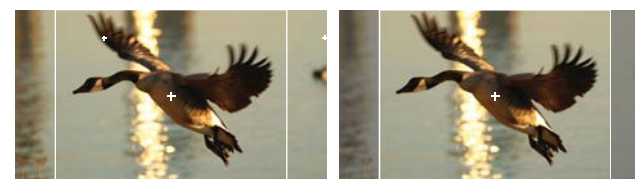
The OBM series can display various markers, including aspect marker, area marker, and center marker. In addition, the detailed display settings of each marker are allowed. For example, the color, brightness, horizontal/vertical position, and thickness of aspect markers can all be adjusted.



Display various markers

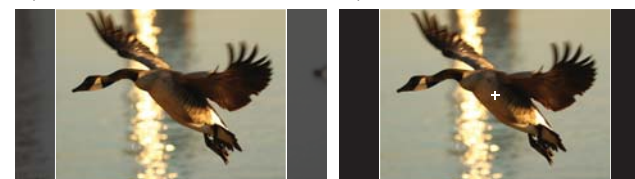


Display Color markers



Aspect Mat 0

Aspect Mat 2



Aspect Mat 5

Aspect Mat 7



## PBP(Picture-by-Picture) Function (P Series only)

The unique Picture-by-Picture function of the OBM P series allows two different SDI input signals to be displayed on the screen simultaneously. This function is very convenient for making instant adjustments to two input sources, because there is no need to individually adjust the different characteristics of two monitors. The OBM P series offers the various Picture-by-Picture modes as follows.

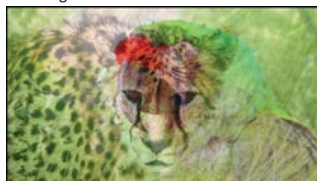
Side-by-Side



Wipe

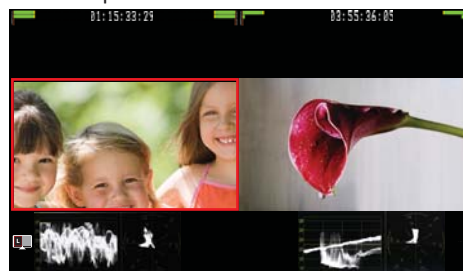
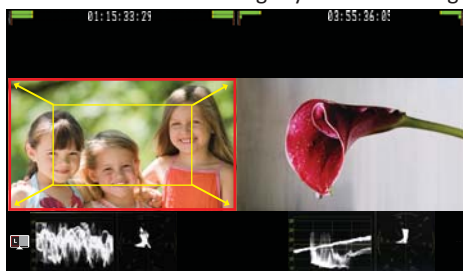


Blending



## 1:1 Scan in PBP Mode (P Series only)

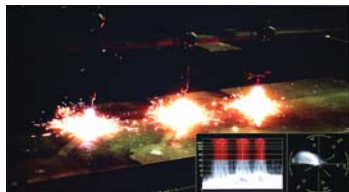
This function allows to magnify the either image of the two inputs in PBP mode.



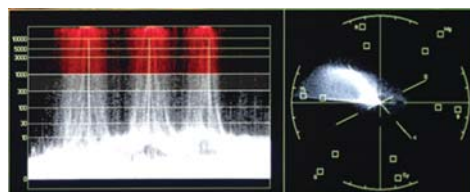
## HDR Waveform (OBM-U/W/P/N Series)

When HDR mode is set on, HDR Waveform is displayed on screen.

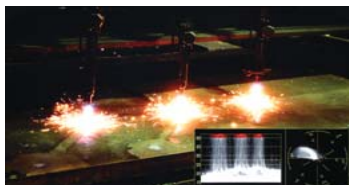
HDR Mode + HDR Waveform



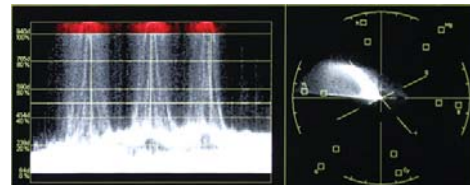
HDR Waveform



SDR Mode + SDR Waveform



SDR Waveform



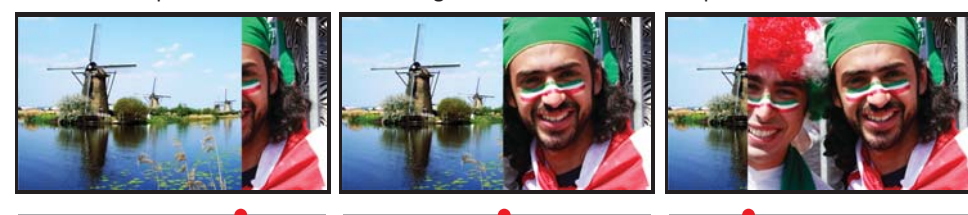
## Dual Waveform Monitor & Vector Scope (P Series only)

The OBM P series can display Waveform, Vector Scope on the two different SDI videos respectively, which is very useful and convenient for dual monitoring.



## WIPE (P Series only)

The area of the two pictures to be displayed is selected using a vertical WIPE pattern. This function is useful when picture detail of the two images must be examined on a pixel basis.



## In-Monitor Display(IMD) Function (OBM-W/P/N Series)

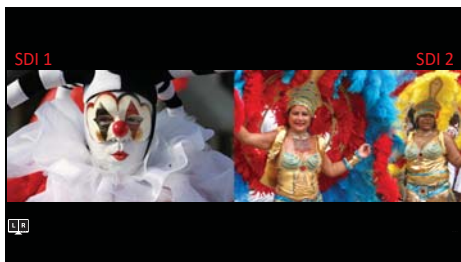
The image source names and tally information can be displayed on the screen, with an external remote function via Ethernet. The TSL system protocol is supported. The color of the source name and tally color can be selectable among White, Red, Green, Blue, Yellow, Cyan, Magenta.



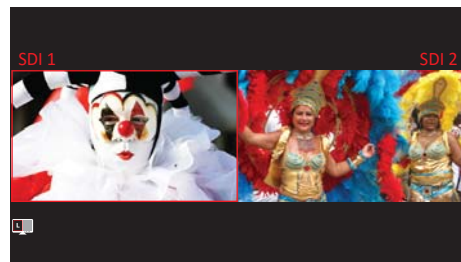


### Color Settings Adjustable to Either of Two Images in PBP Mode (P Series only)

OBM PBP function allows to adjust the color settings to either of the two images and compare the two images. Brightness, Contrast, Color Temperature, Camera Lut, and other color settings can be changed.

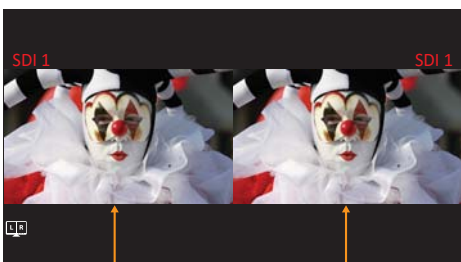


Original Image



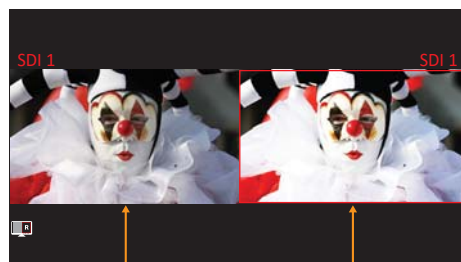
Color settings are adjusted to SDI 1 only.

This unique function allows to display the same image side by side, change the color settings to one image, and then compare the original image and the changed image on the screen.



Original Image

Original Image



Original Image

Color settings changed Image

### Password Lock for User Preset (OBM-U/W/P/N Series)

When multiple users share the same monitor, each user can register his/her own password for color temperature and user preset data. This ensures the users correctly recalls their preset data, and keeps preset information safe from unauthorized use.

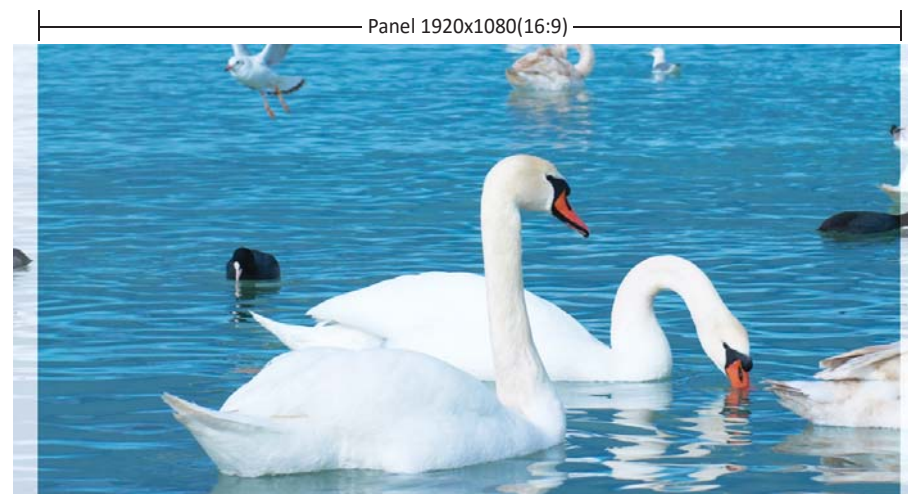
### Custom 3D LUT File Import (OBM-U/W/P/N Series)

The OBM series allow the user to import 3D Look-up Table for accurate and consistent color matching between individual displays, as well as using customized 'looks' that have been created by 3rd party color-grading applications. 33<sup>^3</sup> and 65<sup>^3</sup> cube file is supported.

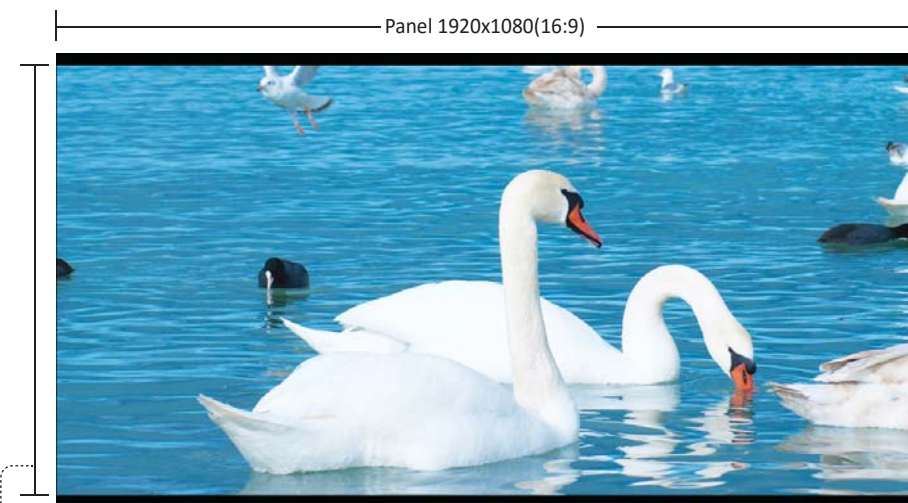


### Scan Mode (OBM-W Series)

When the 4096 x 2160(1.89:1) signal is fed to the 1920x1080(16:9) resolution screen, if you select Zero Scan mode, the whole picture is displayed on the screen, with maintaining 1.89:1 ratio.



Input Image 4096x2160(1.89:1)



Output Image 1920x1012(1.89:1)

# 4K HDR

## OBM U Series

### 4K Professional LCD Monitors

Single Link 12G-SDI  
 3G-SDI Quad Link Square Division / 2SI 4K  
 Wide Color Space  
 Color Space & Gamma Comparison  
 Panel Resolution 3840(or 4096) x 2160  
 9", 17", 24", 31", 55"



The OBM U series incorporates 12G-SDI input and loopout(x2), 3G/HD-SDI input and loopout(x2), HDMI 2.0 input, and SFP optical connector.

The OBM U series accepts up to 3840x2160/24,25,30,50,60p and 4096x2160/24.25.30,50,60p signals.

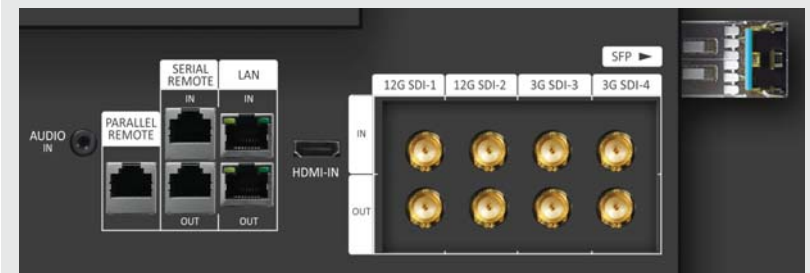
These new U series provides the function to display the HDR(High Dynamic Range) footage, and supports a wide color gamut conforming to DCI-P3 and most of the ITU-R BT.2020 standard.

The OBM U series offers the professional performance, including excellent quality black performance, accurate color reproduction, which make these monitors ideal for 4K live production, versatile monitoring and field production applications.

In addition, the OBM U series supports the integrated 3D LUT, Waveform, Vector Scope, Color Space & Gamma Comparison, and a full feature set.

#### Product Highlights

- 12G/6G-SDI(4K) 2 Channel, 3G/HD-SDI (Level A/B) 2 Channel
- 3G-SDI Quad Link Square Division
- 3G-SDI Quad Link 2 Sample Interleave (2SI)
- HDR(High Dynamic Range) Display supporting PQ EOTF(ST 2084), Hybrid Log Gamma, S-Log3
- 3D-LUT for Accurate Color Reproduction
- Wide Color Space Supporting ITU-R BT.709, SMPTE-C, EBU, Native, DCI-P3, ITU-R BT.2020
- 1.064 Billion Colors
- Camera Log Conversion
- Custom 3D LUT file Import Through USB
- Gamma Selection (1.0 ~ 3.0)
- Color Temperature (3200K, 5500K, 6500K, 9300K, USER 1/2/3, D-CINEMA)
- Support 4096x2160 Aspect
- Compare Color Space & Gamma (Side by Side, Wipe Position)
- Monitor Control via Ethernet, RS-422
- Focus Assist
- Zebra
- Waveform, VectorScope (Wave + Vector, Waveform Wide)
- HDR Waveform
- Firmware Update via USB Flash Memory
- Various Markers (EBU, 4:3, 16:9, 1.85:1, 2.35:1, Variable etc.)
- Zero Scan / Over Scan / 1:1 Scan
- H/V Delay
- Blue/Mono Only
- Time Code Display
- De-embedded 8~16ch Audio Level Meter
- Remote Control via GPI(RJ-45) Port
- White Internal Pattern Display for Color Test
- 3 Color TALLY Lamp
- Rack & VESA Mount (Option)
- SFP Optical Connector
- Closed Caption (608, 708)
- System Data Copy
- Key Lock & Password Lock
- HDMI 2.0 Support
- Aspect
- Freeze
- Camera Log Mapped SDI Loopout
- Easy Firmware Update by USB



\* Functions are subject to change without prior notice for the product quality improvement.

## Specifications

# OBM U Series

ITEM		OBM-U090	OBM-U170	OBM-U240	OBM-U310	OBM-U550L
Input	4 x BNC	12G/6G/3G/HD/SD-SDI-1/2, 3G/HD/SD-SDI-3/4				
	1 x HDMI	HDMI 2.0				
	1 x SFP	Optical				
Output	4 x BNC	12G/6G/3G/HD/SD-SDI-1/2, 3G/HD/SD-SDI-3/4 Active Loop Output				
Input Signal Format	SMPTE ST 2082	2160p(60/59.94/50)				
	SMPTE ST 2081	2160p(30/29.97/25/24/23.98)				
	SMPTE ST 425-AB	1080p(60/59.94/50/30/29.97/25/24/23.98/30sF/29.97sF/25sF/24sF/23.98sF) / 1080i (60/59.94/50)				
	SMPTE ST 274	1080p(30/29.97/25/24/23.98/24sF/23.98sF)				
		1080i (60/59.94/50)				
	SMPTE ST 296	720p(60/59.94/50)				
	SMPTE ST 260	1920 x 1035i(60/59.94)				
	SMPTE ST 2048	2048 x 1080p(24/23.98/24sF/23.98sF)				
	SMPTE ST 125	480i(59.94)				
	ITU-R BT.656	576i(50)				
	HDMI 2.0	~ 2160p(60)				
	SFP	12Gbps, 6Gbps, 2.970Gbps, 1.485Gbps, 270Mbps				
Audio In/Out	1 x Phone Jack In	Line In(Stereo)				
	1 x Phone Jack Out	H/P Out(Front, Stereo)				
	2 x Speaker Out	Stereo				
Display	Size	9" LCD	17.3" LCD	23.8" LCD	31" LCD	55"
	Resolution	1920 x 1080 (16:9)	1920 x 1080 (16:9)	3840 x 2160 (16:9)	4096 x 2160 (17:9)	3840 x 2160 (16:9)
	Pixel Pitch	0.1035mm	0.199mm	0.137mm	0.1704mm	0.315mm
	Color	1.064B Colors(8bit+2bit FRC)	1.064B Colors(10bit+2bit FRC)	1.064B Colors(10bit+2bit FRC)	1.064B Colors(10bit+2bit FRC)	1.064B Colors(8bit+2bit FRC)
	Viewing Angle	176(H), 176(V)	178(H), 178(V)	178(H), 178(V)	178(H), 178(V)	178(H), 178(V)
	Luminance of White	400cd/m <sup>2</sup>	350cd/m <sup>2</sup>	350cd/m <sup>2</sup>	850cd/m <sup>2</sup>	450cd/m <sup>2</sup>
	Contrast	700 : 1	1000 : 1	1000 : 1	1450 : 1	4000 : 1
	Display Area (H x V)	198.72 x 111.78 (mm)	381.9 x 214.8 (mm)	527 x 296 (mm)	698 x 368 (mm)	1209.6 x 680.4 (mm)
General	2 x Ethernet	Control/Update, RJ-45P Input / Output				
	1 x GPIO	GPI-7 Port, RJ-45P Jack				
	2 x Serial	RS-422 Jack, RJ-45P Input / Output				
	1 x USB	For Firmware Update, Color Calibration				
	Power Requirements	AC(100-230V, 50/60Hz) / DC 12V	AC(100-230V, 50/60Hz) / DC 12V	AC(100-230V, 50/60Hz) / DC 24V	AC(100-240V, 50/60Hz) / DC 24V	AC(100-240V, 50/60Hz)
	Power Consumption	18W	40W	100W	180W	220W
	Operating Temperature	0°C ~ 40°C(32°F~104°F)				
	Operating Humidity	20% ~ 80% RH				
	Weight	3kg / 6.61lbs	6.5kg / 14.33lbs	10.5kg / 23.14lbs	22.2kg / 48.94lbs	37kg / 81.57lbs
	Dimensions (WxHxD)	260 x 205 x 90mm (with stand)	447 x 318 x 120mm (with stand)	606 x 403 x 140mm (with stand)	762 x 515 x 210mm (with stand)	1258 x 815 x 270mm (with stand)
		10.23 x 8.07 x 3.54inch	17.59 x 12.51 x 4.72inch	23.85 x 15.86 x 5.51inch	30 x 20.27 x 8.26inch	49.52 x 32.08 x 10.62inch
	Accessories	Power Cable				
	Option	Rack Mount Kit(17"24" only) / Carrying Case / Sun Hood / Acrylic Protector / V-Mount(17" only)			Wall Mount Kit / Carrying Case	

\* Specifications are subject to change without prior notice for the product quality improvement.



# 4K HDR

## OBM W Series

### 4K Wall Monitor for Studio and OB Van

12G/6G/3G-SDI x 2 Input

HDMI 2.0 Input

SFP Module

Panel Resolution 1920x1080(or 1200)

1.064 Billion Colors

18.5", 21", 24", 32", 42", 46", 55"



The OBM W series incorporates 12G-SDI input and loopout(x2), HDMI 2.0 input, SFP optical connector, Component and Composite on the panel of full HD resolution. So, the OBM W series is ideal for building up a 4K monitor wall in the studio or OB van. The OBM W series offers the advanced and convenient features such as HDR(High Dynamic Range), Ethernet Control, Camera Log display, etc.

### Product Highlights

- 12G/6G-SDI 2 Channel
- Dual Link 3G-SDI 2-Sample Interleave
- HDMI 2.0 Support
- HDR(High Dynamic Range) Display supporting PQ EOTF(ST 2084), Hybrid Log Gamma, S-Log3
- 3D-LUT for Accurate Color Reproduction
- 1.064 Billion Colors
- Camera Log Conversion
- Camera Log Mapped SDI Loopout
- Custom 3D LUT File Import Through USB
- Gamma Selection (1.0 ~ 3.0)
- Color Temperature(3200K, 5500K, 6500K, 9300K, USER 1/2/3, DCI-P3)
- Compare Color Settings (Side by Side, Wipe Position)
- Waveform, VectorScope (Wave + Vector, Waveform Wide)
- Various Markers (EBU, 4:3, 16:9, 1.85:1, 2.35:1, Variable etc.)
- White Internal Patterns Display for Color Test
- De-embedded 8~16ch Audio Level Meter
- Remote Control via GPI(RJ-45) Port
- HDR Waveform
- 3 Color TALLY Lamp
- Rack & VESA Mount (Option)
- SFP Optical Connector
- Monitor Control via Ethernet, RS-422
- Easy Firmware Update by USB
- Focus Assist
- Zebra
- Support 4096x2160 Aspect
- Zero Scan / 1:1 Scan
- H/V Delay
- Aspect
- Freeze
- Blue/Mono Only
- Time Code Display
- IMD
- Closed Caption(608, 708)
- System Data Copy
- Key Lock & Password Lock



\* Functions are subject to change without prior notice for the product quality improvement.

# OBM W Series

## Specifications

ITEM		OBM-W180	OBM-W210	OBM-W240	OBM-W310	OBM-W420	OBM-W460	OBM-W550
Input	2 x BNC	12G/6G/3G/HD/SD-SDI-1/2						
	1 x HDMI	HDMI 2.0						
	1 x SFP	Optical						
	3 x BNC (YPbPr)	Analog(YPbPr)						
	1 x BNC (CVBS)	Composite						
Output	2 x BNC	12G/6G/3G/HD/SD-SDI-1/2						
Input Signal Format	SMPTE ST 2082	2160p(60/59.94/50)						
	SMPTE ST 2081	2160p(30/29.97/25/24/23.98)						
	SMPTE ST 425-AB	1080p(60/59.94/50/30/29.97/25/24/23.98/30sF/29.97sF/25sF/24sF/23.98sF) / 1080i (60/59.94/50)						
	SMPTE ST 274	1080p(30/29.97/25/24/23.98/24sF/23.98sF)						
		1080i (60/59.94/50)						
	SMPTE ST 296	720p(60/59.94/50)						
	SMPTE ST 260	1920 x 1035i(60/59.94)						
	SMPTE ST 2048	2048 x 1080p(24/23.98/24sF/23.98sF)						
	SMPTE ST 125	480i(59.94)						
	ITU-R BT.656	576i(50)						
	HDMI 2.0	~ 2160p(60)						
	SFP	12Gbps, 6Gbps, 2.970Gbps, 1.485Gbps, 270Mbps						
Audio In/Out	1 x Phone Jack In	Line In(Stereo)						
	1 x Phone Jack Out	H/P Out(Front, Stereo)						
	2 x Speaker Out	Stereo						
Display	Size	18.5" LCD	21" LCD	24" LCD	32" LCD	42" LCD	46" LCD	54.6" LCD
	Resolution	1920 x 1080 (16:9)	1920 x 1080 (16:9)	1920 x 1200 (16:10)	1920 x 1080 (16:9)	1920 x 1080 (16:9)	1920 x 1080 (16:9)	1920 x 1080 (16:9)
	Pixel Pitch	0.213mm	0.248mm	0.270mm	0.363mm	0.484mm	0.530 mm	0.63mm
	Color	1.064B colors(8bit+2bit FRC)	1.064B colors(8bit+2bit FRC)	1.064B colors(8bit+2bit FRC)	1.064B colors(8bit+2bit FRC)	1.064B colors(8bit+2bit FRC)	1.064B colors(8bit+2bit FRC)	1.064B colors(8bit+2bit FRC)
	Viewing Angle	178(H), 178(V)	178(H), 178(V)	178(H), 178(V)	178(H), 178(V)	178(H), 178(V)	178(H), 178(V)	178(H), 178(V)
	Luminance of White	350cd/m²	250cd/m²	300cd/m²	350cd/m²	700cd/m²	700cd/m²	700cd/m²
	Contrast	1000 : 1	1000 : 1	1000 : 1	1200 : 1	4000 : 1	4000 : 1	4000 : 1
	Display Area (H x V)	408.96 x 230.04 (mm)	476.64 x 268.11 (mm)	518.4 x 324.0 (mm)	698.4 x 392.85 (mm)	930.24 x 523.26 (mm)	1018.08 x 572.67 (mm)	1209.6 x 680.4 (mm)
General	2 x Ethernet	Control/Update, RJ-45P Input / Output						
	1 x GPIO	GPI-7 Port, RJ-45P Jack						
	2 x Serial	RS-422 Jack, RJ-45P Input / Output						
	1 x USB	For Firmware Update, Color Calibration						
	Power Requirements	AC(100-230V,50/60Hz)/DC12V			AC(100-230V,50/60Hz)/DC24V	AC(100-240V, 50/60Hz)	AC(100-240V, 50/60Hz)	AC(100-240V, 50/60Hz)
	Power Consumption	Max 40W	Max 40W	Max 40W	Max 100W	156W	220W	283W
	Operating Temperature	0 ~ 40°C(32°F~104°F)	0 ~ 40°C(32°F~104°F)	0 ~ 40°C(32°F~104°F)	0 ~ 40°C(32°F~104°F)	0 ~ 40°C(32°F~104°F)	0 ~ 40°C(32°F~104°F)	0 ~ 40°C(32°F~104°F)
	Operating Humidity	20 ~ 80% RH	20 ~ 80% RH	20 ~ 80% RH	20 ~ 80% RH	20 ~ 80% RH	20 ~ 80% RH	20 ~ 80% RH
	Weight	6.7kg/14.77lbs	8.5kg/18.73lbs	10.5kg/23.14lbs	22kg/48.50lbs	32kg/70.54lbs	35kg/77.16lbs	37kg/81.57lbs
	Dimensions(with stand)	470 x 335 x 120mm	538 x 363 x 120mm	600 X 430 X 130 mm	762 x 515 x 210mm	988x640x300mm	1074x687x300mm	1258 x 815 x 270mm
		18.50 x 13.18 x 4.72inch	21.18 x 14.26 x 4.72inch	23.62 x 16.92 x 5.11inch	30 x 20.27 x 8.26inch	38.89 x 21.19 x 11.81inch	42.28 x 27.04 x 11.81inch	49.52 x 32.08 x 10.62inch
	Accessories	Power Cable						
	Option	Rack Mount Kit / Carrying Case / Sun Hood/ Acrylic Protector / V-Mount			Wall Mount Kit / Carrying Case			

\* Specifications are subject to change without prior notice for the product quality improvement.

# PBP HDR

## OBM P Series

### True Dual Monitoring Solutions

*Picture By Picture*  
*Dual Waveform and Vector Scope*  
*3G-SDI x 2 Input*  
*Custom 3D LUT Import*  
*1.064 Billion Colors*  
*Panel Resolution 1920x1080(or 1200)*  
*18.5", 21", 24", 32", 42", 46", 55"*



"The OBM P series incorporates the dual scaler, which enables to display the two different SDI signals on the screen. And, the OBM P series can display Waveform and Vector Scope on the two different SDI videos respectively, which is very useful and convenient for dual monitoring. Postium's OBM P series offers the superior picture quality and wide viewing angle, and includes an array of professional features and the advanced audio & video signal analysis functions. The OBM P series is equipped with various I/O interfaces such as 3G-SDI, HDMI, Component, Composite."

## Product Highlights

- 3G/HD/SD-SDI 2 Channel
- PBP(Picture-by-Picture) Function
- 1:1 Scan in PBP Mode
- Color Settings Adjustable to Either of Two Images in PBP Mode
- Dual Waveform Monitor & Vector Scope
- HDR(High Dynamic Range) Display supporting PQ EOTF(ST 2084), Hybrid Log Gamma, S-Log3
- 3D-LUT for Accurate Color Reproduction
- 1.064 Billion Colors
- Camera Log Conversion
- Camera Log Mapped SDI Loopout
- Custom 3D LUT File Import Through USB
- Gamma Selection (1.0 ~ 3.0)
- Color Temperature(3200K, 5500K, 6500K, 9300K, USER 1/2/3, DCI-P3)
- Compare Color Settings (Side by Side, Wipe Position)
- Monitor Control via Ethernet, RS-422
- Zero Scan / Over Scan / 1:1 Scan
- Easy Firmware Update by USB
- Fast Mode
- Focus Assist
- Zebra
- HDR Waveform
- De-embedded 8~16ch Audio Level Meter
- Remote Control via GPI(RJ-45) Port
- White Internal Patterns Display for Color Test
- 3 Color TALLY Lamp
- Rack & VESA Mount (Option)
- Closed Caption(608, 708)
- System Data Copy
- Key Lock & Password Lock
- Aspect
- Freeze
- Zoom
- H/V Delay
- Blue/Mono Only
- Time Code Display
- IMD



\* Functions are subject to change without prior notice for the product quality improvement.



# OBM P Series

## Specifications

ITEM		OBM-P180	OBM-P210	OBM-P240	OBM-P310	OBM-P420	OBM-P460	OBM-P550
Input	2 x BNC	3G/HD/SD-SDI-1/2						
	1 x HDMI	HDMI 1.3a						
	3 x BNC (YPbPr)	Analog(YPbPr)						
	1 x BNC (CVBS)	Composite						
Output	2 x BNC	3G/HD/SD-SDI-1/2						
Input Signal Format	SMPTE ST 425-AB	1080p(60/59.94/50/30/29.97/25/24/23.98/30sF/29.97sF/25sF/24sF/23.98sF) / 1080i (60/59.94/50)						
	SMPTE ST 274	1080p(30/29.97/25/24/23.98/24sF/23.98sF)						
		1080i (60/59.94/50)						
	SMPTE ST 296	720p(60/59.94/50)						
	SMPTE ST 260	1920 x 1035i(60/59.94)						
	SMPTE ST 2048	2048 x 1080p(24/23.98/24sF/23.98sF)						
	SMPTE ST 125	480i(59.94)						
	ITU-R BT.656	576i(50)						
Audio In/Out	HDMI	~ 1080p(60)						
	1 x Phone Jack In	Line In(Stereo)						
	1 x Phone Jack Out	H/P Out(Front, Stereo)						
	2 x Speaker Out	Stereo						
Display	Size	18.5" LCD	21" LCD	24" LCD	32" LCD	42" LCD	46" LCD	54.6" LCD
	Resolution	1920 x 1080 (16:9)	1920 x 1080 (16:9)	1920 x 1200 (16:10)	1920 x 1080 (16:9)	1920 x 1080 (16:9)	1920 x 1080 (16:9)	1920 x 1080 (16:9)
	Pixel Pitch	0.213mm	0.248mm	0.270mm	0.363mm	0.484mm	0.530 mm	0.63mm
	Color	1.064B colors(8bit+2bit FRC)	1.064B colors(8bit+2bit FRC)	1.064B colors(8bit+2bit FRC)	1.064B colors(8bit+2bit FRC)	1.064B colors(8bit+2bit FRC)	1.064B colors(8bit+2bit FRC)	1.064B colors(8bit+2bit FRC)
	Viewing Angle	178(H), 178(V)	178(H), 178(V)	178(H), 178(V)	178(H), 178(V)	178(H), 178(V)	178(H), 178(V)	178(H), 178(V)
	Luminance of White	350cd/m <sup>2</sup>	250cd/m <sup>2</sup>	300cd/m <sup>2</sup>	350cd/m <sup>2</sup>	700cd/m <sup>2</sup>	700cd/m <sup>2</sup>	700cd/m <sup>2</sup>
	Contrast	1000 : 1	1000 : 1	1000 : 1	1200 : 1	4000 : 1	4000 : 1	4000 : 1
	Display Area (H x V)	408.96 x 230.04 (mm)	476.64 x 268.11 (mm)	518.4 x 324.0 (mm)	698.4 x 392.85 (mm)	930.24 x 523.26 (mm)	1018.08 x 572.67 (mm)	1209.6 x 680.4 (mm)
General	1 x Ethernet	Control/Update, RJ-45P Input / Output						
	1 x GPIO	GPI-7 Port, RJ-45P Jack						
	2 x Serial	RS-422 Jack, RJ-45P Input / Output						
	1 x USB	For Firmware Update, Color Calibration						
	Power Requirements	AC(100-230V,50/60Hz)/DC12V			AC(100-230V,50/60Hz)/DC24V	AC(100-240V, 50/60Hz)		
	Power Consumption	Max 40W	Max 40W	Max 40W	Max 100W	156W	220W	283W
	Operating Temperature	0 ~ 40°C(32°F~104°F)	0 ~ 40°C(32°F~104°F)	0 ~ 40°C(32°F~104°F)	0 ~ 40°C(32°F~104°F)	0 ~ 40°C(32°F~104°F)	0 ~ 40°C(32°F~104°F)	0 ~ 40°C(32°F~104°F)
	Operating Humidity	20 ~ 80% RH	20 ~ 80% RH	20 ~ 80% RH	20 ~ 80% RH	20 ~ 80% RH	20 ~ 80% RH	20 ~ 80% RH
	Weight	6.7kg/14.77lbs	8.5kg/18.73lbs	10.5kg/23.14lbs	22kg/48.50lbs	32kg/70.54lbs	35kg/77.16lbs	37kg/81.57lbs
	Dimensions(with stand)	470 x 335 x 120mm	538 x 363 x 120mm	600 X 430 X 130mm	762 x 515 x 210mm	988x640x300mm	1074x687x300mm	1258 x 815 x 270mm
		18.50 x 13.18 x 4.72inch	21.18 x 14.26 x 4.72inch	23.62 x 16.92 x 5.11inch	30 x 20.27 x 8.26inch	38.89 x 21.19 x 11.81inch	42.28 x 27.04 x 11.81inch	49.52 x 32.08 x 10.62inch
	Accessories	Power Cable						
	Option	Rack Mount Kit / Carrying Case / Sun Hood / Acrylic Protector / V-Mount			Wall Mount Kit / Carrying Case			

\* Specifications are subject to change without prior notice for the product quality improvement.

# HDR OBM N Series

## Outstanding Picture Quality

3G-SDI x 2 Input

1.064 Billion Colors

3D-LUT for Accurate Color Reproduction

Camera Log Conversion

Custom 3D LUT File Import

Panel Resolution 1920x1080(or 1200)

18.5", 21", 24", 32", 42", 46", 55"



"The OBM N series offers the superior picture quality and wide viewing angle, and includes an array of professional features and the advanced audio & video signal analysis functions including Waveform, Vector Scope, Audio Level Meter, IMD, Camera Log Slection, Custom 3D LUT Import, Focus Assist, etc. The OBM N series are equipped with various I/O interfaces such as 3G-SDI, HDMI, Component, Composite, DVI.

The wide model lineup from 18.5" up to 55" provides the best solutons from the field production to monitoring in studio."

## Product Highlights

- 3G/HD/SD-SDI 2 Channel
- HDR(High Dynamic Range) Display supporting PQ EOTF(ST 2084), Hybrid Log Gamma, S-Log3
- 3D-LUT for Accurate Color Reproduction
- 1.064 Billion Colors
- Camera Log Conversion
- Camera Log Mapped SDI Loopout
- Custom 3D LUT File Import Through USB
- Gamma Selection (1.0 ~ 3.0)
- Color Temperature(3200K, 5500K, 6500K, 9300K, USER 1/2/3, D-CINEMA)
- Compare Color Settings (Side by Side, Wipe Position)
- Waveform, VectorScope  
(Wave + Vector, Waveform Wide, Position Change, Size Adjustment)
- Monitor Control via Ethernet, RS-422
- Various Markers (EBU, 4:3, 16:9, 1.85:1, 2.35:1, Variable etc.)
- White Internal Patterns Display for Color Test
- Easy Firmware Update by USB
- Fast Mode
- Focus Assist
- Zebra
- HDR Waveform
- Zero Scan / 1:1 Scan
- H/V Delay
- Blue/Mono Only
- Time Code Display
- IMD
- De-embedded 8~16ch Audio Level Meter
- Remote Control via GPI(RJ-45) Port
- 3 Color TALLY Lamp
- Rack & VESA Mount (Option)
- Closed Caption(608, 708)
- System Data Copy
- Key Lock & Password Lock
- Aspect
- Freeze



\* Functions are subject to change without prior notice for the product quality improvement.

## Specifications

# OBM N Series

ITEM		OBM-N180	OBM-N210	OBM-N240	OBM-N310	OBM-N420	OBM-N460	OBM-N550
Input	2 x BNC	3G/HD/SD-SDI-1/2						
	1 x HDMI	HDMI 1.3a						
	3 x BNC (YPbPr)	Analog(YPbPr)						
	1 x BNC (CVBS)	Composite						
	1 x DVI	DVI-D						
Output	2 x BNC	3G/HD/SD-SDI-1/2						
Input Signal Format	SMPTE ST 425-AB	1080p(60/59.94/50/30/29.97/25/24/23.98/30sF/29.97sF/25sF/24sF/23.98sF) / 1080i (60/59.94/50)						
	SMPTE ST 274	1080p(30/29.97/25/24/23.98/24sF/23.98sF)						
		1080i (60/59.94/50)						
	SMPTE ST 296	720p(60/59.94/50)						
	SMPTE ST 260	1920 x 1035i(60/59.94)						
	SMPTE ST 2048	2048 x 1080p(24/23.98/24sF/23.98sF)						
	SMPTE ST 125	480i(59.94)						
	ITU-R BT.656	576i(50)						
	HDMI	~ 1080p(60)						
Audio In/Out	DVI-D	VESA/IBM Modes						
	1 x Phone Jack In	Line In(Stereo)						
	1 x Phone Jack Out	H/P Out(Front, Stereo)						
	2 x Speaker Out	Stereo						
Display	Size	18.5" LCD	21" LCD	24" LCD	32" LCD	42" LCD	46" LCD	54.6" LCD
	Resolution	1920 x 1080 (16:9)	1920 x 1080 (16:9)	1920 x 1200 (16:10)	1920 x 1080 (16:9)	1920 x 1080 (16:9)	1920 x 1080 (16:9)	1920 x 1080 (16:9)
	Pixel Pitch	0.213mm	0.248mm	0.270mm	0.363mm	0.484mm	0.530 mm	0.63mm
	Color	1.064B colors(8bit+2bit FRC)	1.064B colors(8bit+2bit FRC)	1.064B colors(8bit+2bit FRC)	1.064B colors(8bit+2bit FRC)	1.064B colors(8bit+2bit FRC)	1.064B colors(8bit+2bit FRC)	1.064B colors(8bit+2bit FRC)
	Viewing Angle	178(H), 178(V)	178(H), 178(V)	178(H), 178(V)	178(H), 178(V)	178(H), 178(V)	178(H), 178(V)	178(H), 178(V)
	Luminance of White	350cd/m <sup>2</sup>	250cd/m <sup>2</sup>	300cd/m <sup>2</sup>	350cd/m <sup>2</sup>	700cd/m <sup>2</sup>	700cd/m <sup>2</sup>	700cd/m <sup>2</sup>
	Contrast	1000 : 1	1000 : 1	1000 : 1	1200 : 1	4000 : 1	4000 : 1	4000 : 1
	Display Area (H x V)	408.96 x 230.04 (mm)	476.64 x 268.11 (mm)	518.4 x 324.0 (mm)	698.4 x 392.85 (mm)	930.24 x 523.26 (mm)	1018.08 x 572.67 (mm)	1209.6 x 680.4 (mm)
General	1 x Ethernet	Control/Update, RJ-45P Input / Output						
	1 x GPIO	GPI-7 Port, RJ-45P Jack						
	2 x Serial	RS-422 Jack, RJ-45P Input / Output						
	1 x USB	For Frmware Update, Color Calibration						
	Power Requirements	AC(100-230V,50/60Hz)/DC12V			AC(100-230V,50/60Hz)/DC24V	AC(100-240V, 50/60Hz)		
	Power Consumption	Max 40W	Max 40W	Max 40W	Max 100W	156W	220W	283W
	Operating Temperature	0 ~ 40°C(32°F~104°F)	0 ~ 40°C(32°F~104°F)	0 ~ 40°C(32°F~104°F)	0 ~ 40°C(32°F~104°F)	0 ~ 40°C(32°F~104°F)	0 ~ 40°C(32°F~104°F)	0 ~ 40°C(32°F~104°F)
	Operating Humidity	20 ~ 80% RH	20 ~ 80% RH	20 ~ 80% RH	20 ~ 80% RH	20 ~ 80% RH	20 ~ 80% RH	20 ~ 80% RH
	Weight	6.7kg/14.77lbs	8.5kg/18.73lbs	10.5kg/23.14lbs	22kg/48.50lbs	32kg/70.54lbs	35kg/77.16lbs	37kg/81.57lbs
	Dimensions(with stand)	470 x 335 x 120mm	538 x 363 x 120mm	600 X 430 X 130 mm	762 x 515 x 210mm	988x640x300mm	1074x687x300mm	1258 x 815 x 270mm
		18.50 x 13.18 x 4.72inch	21.18 x 14.26 x 4.72inch	23.62 x 16.92 x 5.11inch	30 x 20.27 x 8.26inch	38.89 x 21.19 x 11.81inch	42.28 x 27.04 x 11.81inch	49.52 x 32.08 x 10.62inch
	Accessories	Power Cable						
	Option	Rack Mount Kit / Carrying Case / Sun Hood / Acrylic Protector / V-Mount			Wall Mount Kit / Carrying Case			

\* Specifications are subject to change without prior notice for the product quality improvement.





**POSTIUM KOREA** Co., Ltd.

208, Building A, Samsung Techno Valley, 140, Tongil-ro, Deogyang-gu, Goyang-si, Gyeonggi-do, Korea, 10594  
Tel : +82.2.354.6055 / Fax : +82.2.354.6056 / E-mail : [sales@postium.com](mailto:sales@postium.com) / [www.postium.com](http://www.postium.com)