

IDMX1000-v2

L.E.D. Light QUICKSTART GUIDE



What's included

- IDMX1000-v2 Light
- AC Adapter + Power Cord
- Yoke with the Stand Adapter
- Handle (2)
- Fuse

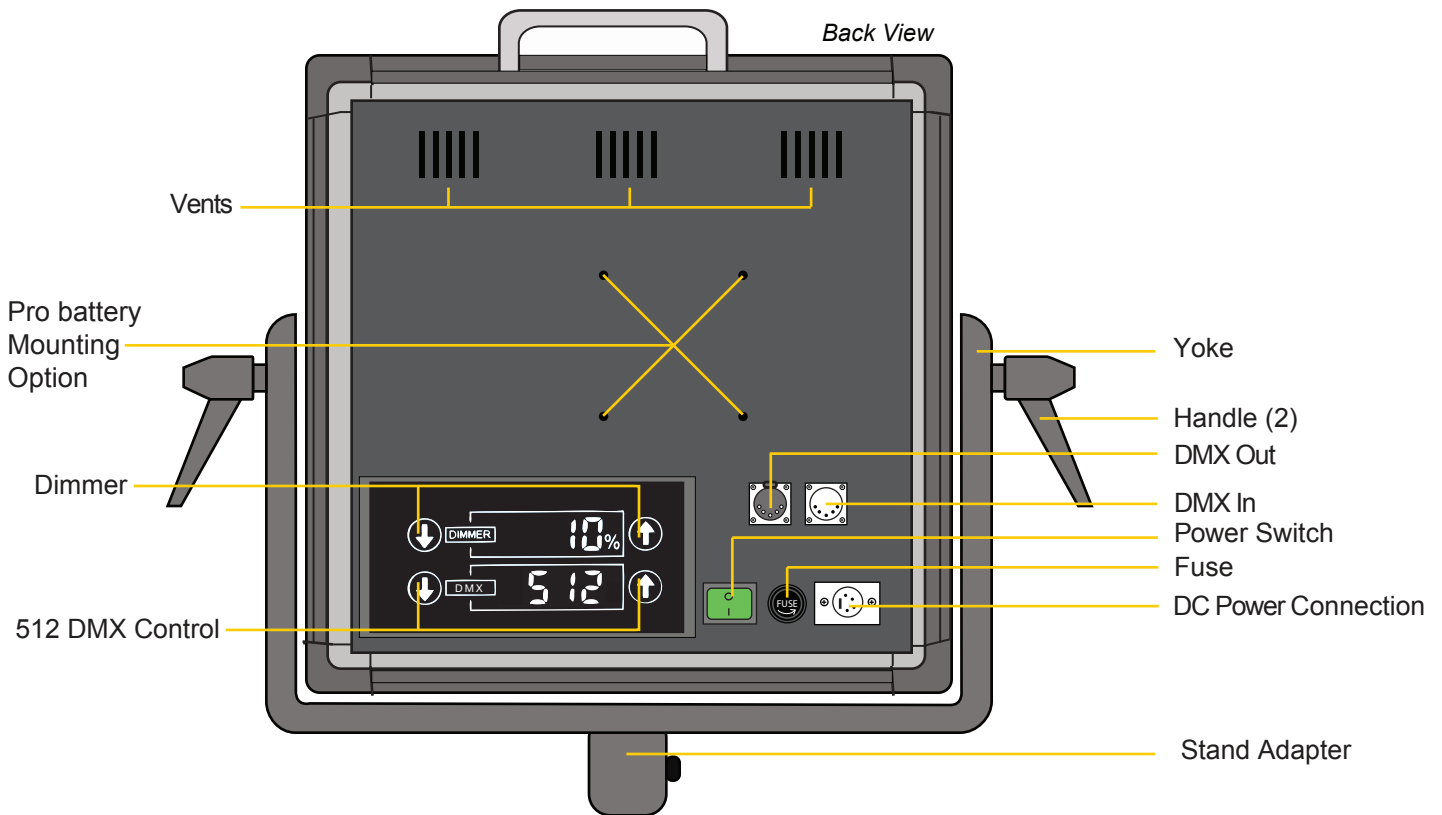
Checked by

IDMX1000-v2

L.E.D. Light QUICKSTART GUIDE

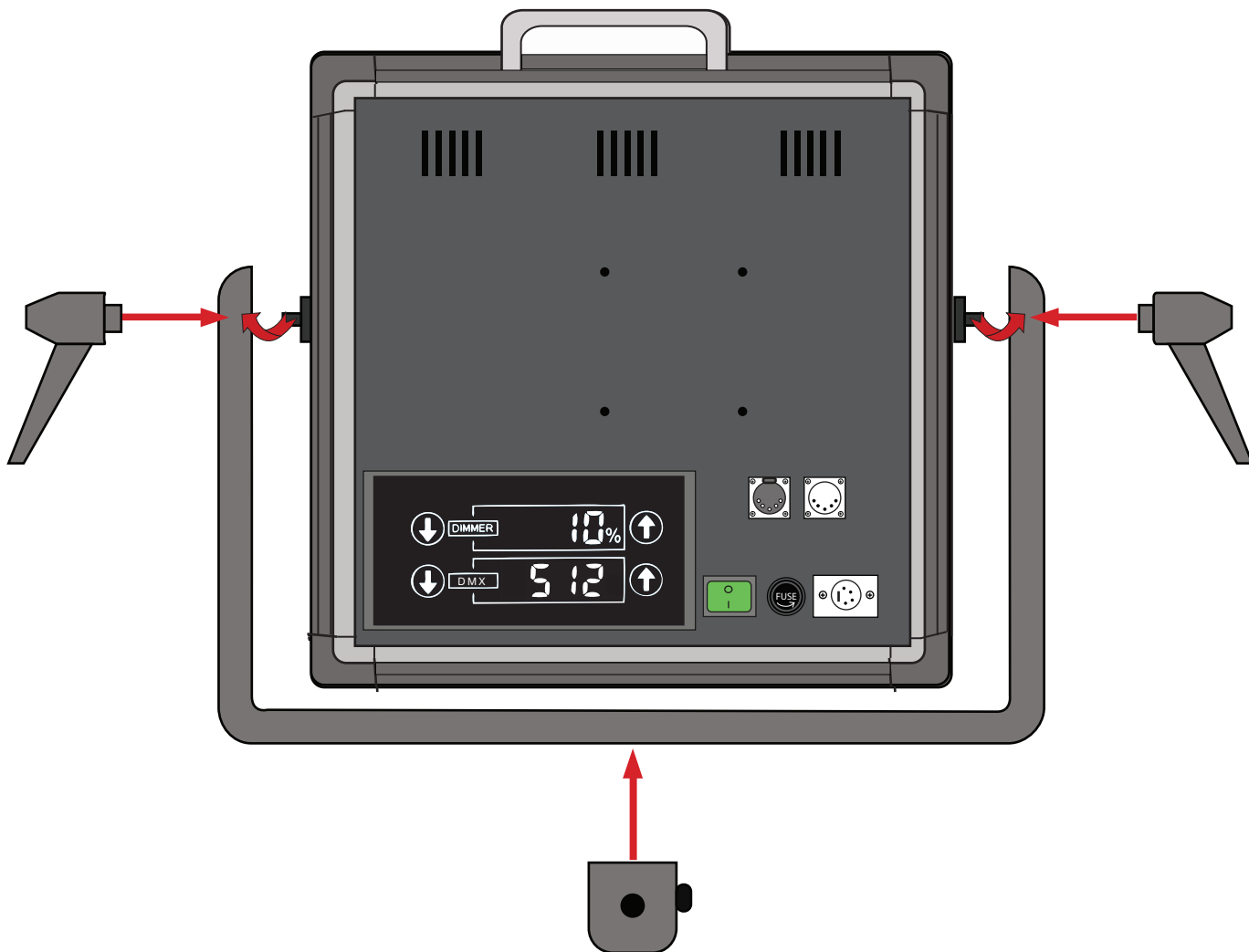
GETTING STARTED

1. Connect the included AC Adapter to power the IDMX 1000 light.
2. Turn the light on / off with the Power Switch.
3. Control the amount of the light with the Dimmer Control. Adjust the intensity of the light by touching the digital panel up and down to increase or decrease the intensity and of the light.
4. DMX Control can be used by 512 DMX Board.
5. Light can be assigned a number by rear panel control.



IDMX1000-v2

L.E.D. Light QUICKSTART GUIDE





CONDITIONS OF WARRANTY SERVICE

- Free service for one year from the day of purchase if the problem is caused by manufacturing errors.
- The components and maintenance service fee will be charged if the warranty period has expired.

Free Service will not be Provided in the Following Situations: (* Even if the product is still within the warranty period.)

- Damage caused by abuse or misuse, dismantling, or changes to the product not made by the company.
- Damage caused by natural disaster, abnormal voltage, and environmental factors etc.