

# F3 (Friction Follow Focus)

## The ikan F3

### Kit Includes

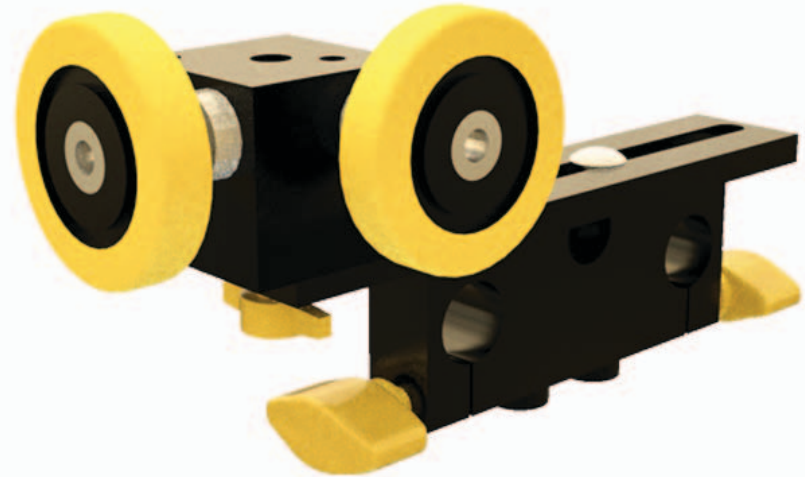
ELE-15rm 15mm Rod Mount  
Follow Focus Adjustment Plate  
Gear Box With Wheels And Riser

Ready to up your game? If you're truly ready to take your productions to the next level, then you need precision that only a follow focus can give. But if you're on a budget, a follow focus might be priced out of reach...until now!

The new ikan, Friction, follow focus is perfect if you're using smaller lighter lenses and you want greater control.

Simply mount the unit on your rail system and you're ready to go.

Adjust the friction focus until the rubber ring touches the focus ring on your camera Lens. Once sufficient contact is made, you're in business. Now, you can pull focus off the barrel.



\$ 199.00

### Features

- Follow focus, no expensive lens gears necessary
- No additional pieces needed
- Nothing to assemble
- Ideally suited for short focal length lenses
- Made with high precision gear box.

Unit is fully adjustable, the gear box rotates 90 degrees to compensate for lenses with focus rings close to the camera body.

Fully compatible with any ikan elements kits, 15mm rod-based camera support system.

