

CH1459

Chimera for ID1000/ID1000-v2/IDMX1000/IB1000

ONE SHEET

Overview

The Chimera softbox, CH1459, is a shaping tool that was created to modify the functionality of ikan's 1000's and 1024's LED lights.

This softbox easily slips over the integrated barndoors of the light, then narrows and diffuses the light output.

Included with this products is 3 front screen options, a 30 degree LED front lens which provides direction control, a full and ¼ grid cloth to give you varying degree of softness, and a storage bag.



CH1459 | Chimera for ID1000/ID1000-v2/IDMX1000/IB1000 | UPC Code: 847983004539

Special Features

- Includes 3 Front Screen Options (30 LED front Lens, Full and 1/4 grid)
- Light Weight and Collapsible
- Easy to Use, Store and Transport
- Carrying Bag with Shoulder Strap
- Also compatible with IFB1024/IFD1024

Recommended For

- Studio Lighting
- Interviews



www.facebook.com/ikanseeit



www.twitter.com/ikancorp



www.vimeo.com/ikancorp



www.youtube.com/ikancorp

ikan

www.ikancorp.com

1.713.272.8822

sales@ikancorp.com

CH1459

Features you need, Prices you want.

Light Weight & Collapsible

Since the CH1459 is collapsible, it is easy to store and transport, as well as easy to use.

What's Included

3 x Front Screen Options
1 x 30 LED Front Lens, Full, and 1/4 Grid

Specifications

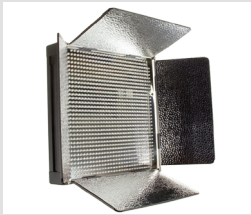
| | |
|-----------------|------------------|
| Dimensions | 12" x 12" x 5.5" |
| Weight | 2 lbs |
| Shipping Weight | 3 lbs |

Multi-Compactable

The CH1459 Chimera is compatible with the ID100, ID1000-v2, IDMX1000, IB1000, as well as the IFB1024 & IFD1024 Light Models.

Accessories

ID1000-v2
LED Studio Light



IB1000
Bi-Color LED Light



IDMX1000-v2
Studio Light w/
Touchscreen



IFB1024
Bi-Color Featherweight Light
w/ AB & V-Mount Plates



IFD1024
Daylight Featherweight Light
w/ AB & V-Mount Plates

