

CC8

ikan

Canvas Full Color Bendable LED Panel



What's Included

- ☐ 1 x CC8 Bi-color LED Panel Light
- ☐ 1 x 5/8" Baby Pin with 90 degree Mount Holes
- ☐ 1 x Controller box
- ☐ 1 x Egg Crate
- ☐ 1 x Hanging Strap
- ☐ 1 x Power Cord
- ☐ 1 x Power Supply
- ☐ 1 x Soft Box
- ☐ 1 x X-Holder with Ball Mount

Getting Started

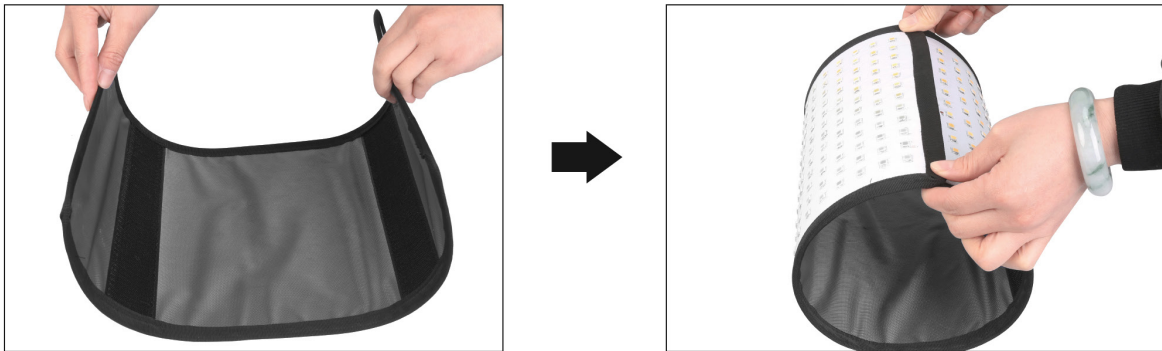
Thank you for buying the CC8 Canvas Full Color Bendable Panel Light from Ikan. Please carefully read the instructions and guide before operating the products. The guide includes product usage and maintenance. When you operate the product, please make sure that you have read the instructions carefully. All the content of the manual is based on up-to-date information; technical data subject to change without notice.

Safety Instructions

1. Connect the AC power cable to the controller box before plugging into the power source. You risk electrocution by not following this instruction.
2. Don't drag cables with excessive force. Any repairs on the products should be performed by Ikan technicians. Users should not remove the power supply, or substitute a different power supply. This might damage the unit and will not be covered under warranty.
3. Be sure that the power is off before connecting and changing the fixture head or disconnecting your cable from the power source. We recommend using Ikan connecting cables and connectors to avoid electrical shock.
4. The voltage shouldn't exceed the value in the technical specifications. If the voltage is greater than, or less than the regulated values, it could damage the product.

Overview

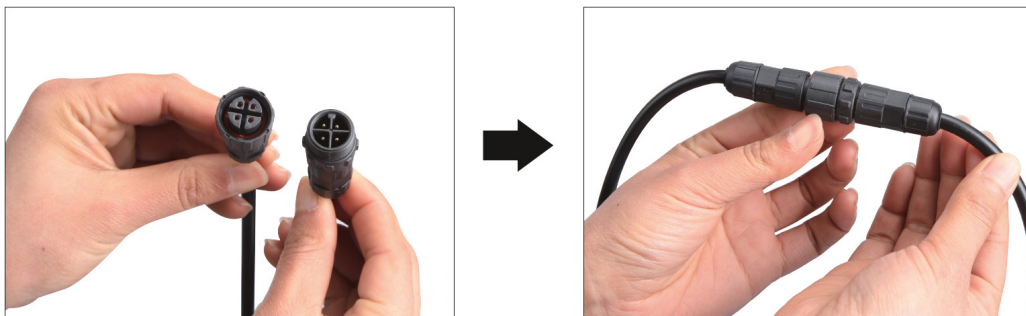
The care and cleaning of the Canvas Bendable LED light. The CC8 should be rolled up and placed back into the carrying bag when not in use. The LEDs should be facing out when placed into the carrying bag. The two ends of the Canvas light should meet.



If the LED's should get dirty or covered in dust the unit can be cleaned with mild soap and water on a damp cloth.

DO NOT SUBMERGE THE UNIT IN WATER

Connecting the 4 prong cable between the controller box and the panel light.

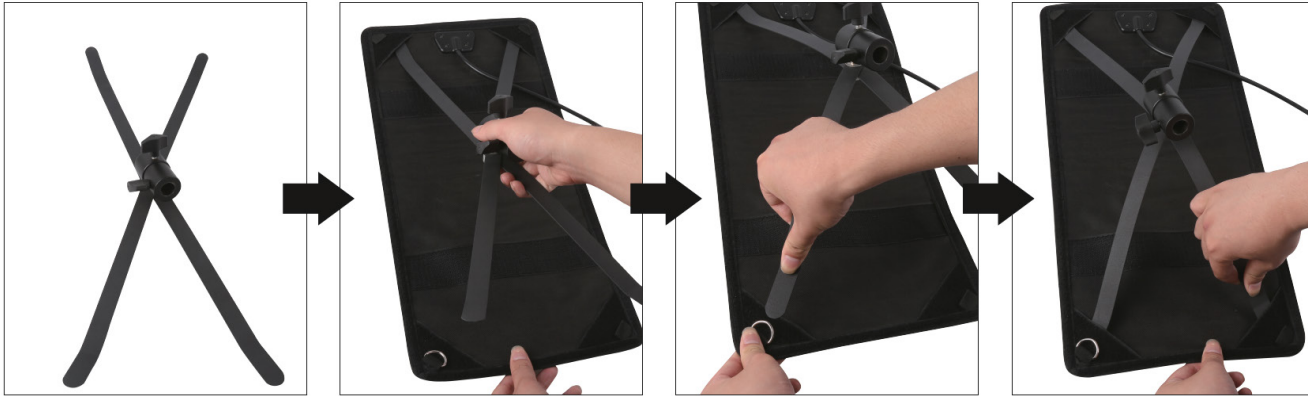


Align the male and female plugs so they line up and screw together until the cable is tight.

Installation of the X-Holder with ball mount

The X-holder should be loose before inserting the struts into the hook & loop corners.

1. Place the struts into the hook & loop flaps at the corners of the panel.
2. Place them in opposite of each other for them to stay in place.
3. Tighten the tension knob at the center to keep the struts locked in place.



Note: To avoid damage to the LED's, place the panel light LED side down on soft material.

When placing the light mount on the 5/8" baby pin, this allows you to adjust the light in any desirable position.



Ikan developed the CC8 bendable light to handle multiple situations whether you need traditional 5600K (daylight) and 3200K (tungsten) or the full color wheel spectrum. The CC8 offers a professional and customizable LED source. In addition, the light features cooling flex system for optimizing heat dissipation. Specially, the CC8 offers the following features:

1. The 0-100% brightness incremental adjustment of the 2750K – 6500K temperature enable fine-tuning.
2. Adjust RGB colors manually, rotate through HSI color wheel, or select from our commonly used gels.
3. Ultra-low noise and active cooling technology contribute to excellent thermal stability.
4. The bright LCD readout is easy to view, enabling smooth adjustment of functions.
5. Digitally adjustable knob allows you to adjust menu settings quickly and accurately.
6. AC/DC power control box allows the light to be powered by battery or DC power supply.
7. The softbox with grid cloth and 60 degree egg crate is included with the light.

Appearance & Structure - Light

CC8 is illustrated as follows

5/8 Receiver: attaches to a stand or a 5/8" baby pin w/90 degree holes

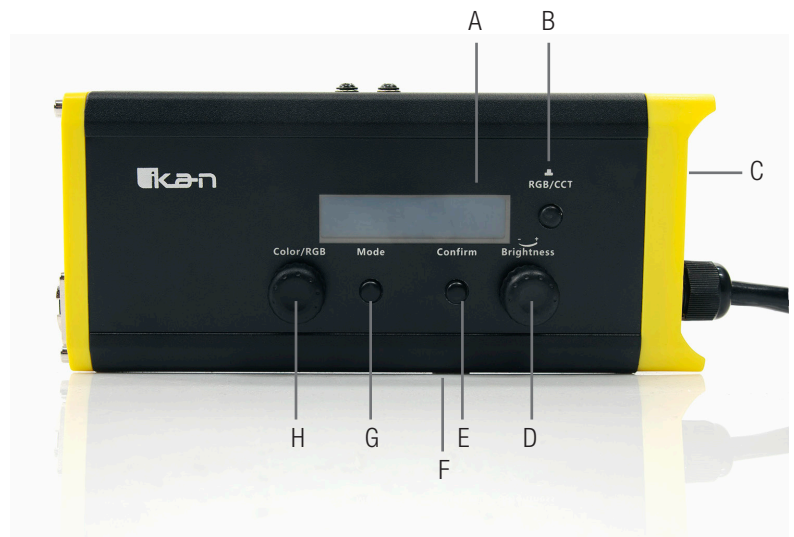
Mount: Adjustable lighting direction

Hook & Loop around the edge of the light



Appearance & Structure - Control Box

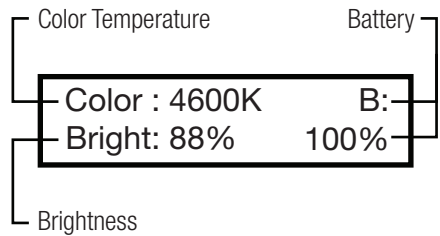
- A. LCD Display Screen
- B. Toggles Between CCT Mode(2750K – 6500K) and Full RGB Mode
- C. Power On/Off Switch Location
- D. CCT Form – Adjust Light Brightness
- RGB Form – Adjust Lighted Value
- E. Confirm Selection
- F. Battery Release Button
- G. Access and toggle menu within CCT Mode or RGB Mode
- H. CCT Mode– Color Adjustment Knob
- RGB Mode – Rotate Between Changeable Options



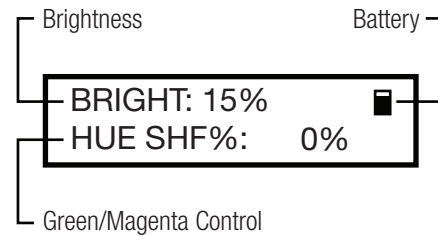
Screen Display Function

CCT Form

1. CCT

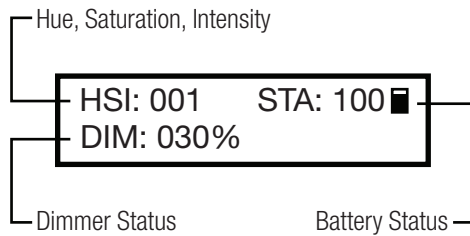


2. CCT Hue Shift

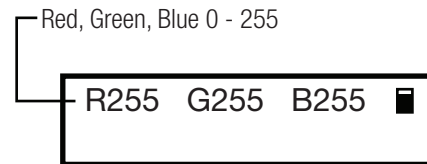


RGB Form

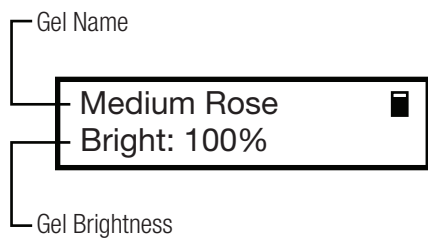
1. HSI



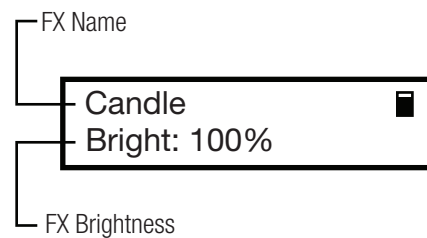
2. RGB Mode



3. Gel Mode (select a Gel for the name to show)



4. SFX Mode



Gel List

Bastard Amber	Sky Blue	Light Rose
Medium Bastard Amber	Brilliant Blue	Rose
Golden Amber	Light Green Blue	Lilac
Soft Golden Amber	Bright Blue	Lavender
Pale Apricot	Hamburg Lavender	Pea Green
Rose Gold	Daylight Blue	Pale Yellow
Flesh Pink	Medium Yellow	Green
Salmon Pink	Straw	Moss Green
Pale Rose Pink	Fire	Gaslight
Surprise Pink	Flame	Green
Steel Blue	Light Red	Chroma
Booster Blue	Medium Red	Green

SFX List

Police
Lighting
TV Flicker
Candle
Scene Yellow
Scene Blue
Scene Green
Scene Pink

Installation & Power Supply

1. Ensure power is off before setting up light.
2. Place the light on the Ikan customized stands, release the tension knob on the 5/8" receiver, adjust the light in the desired direction, and then tighten the tension knob on the 5/8" receiver.
3. When connecting the power cords, plug the 4-pin XLR power cord into the controller box.

Notice & Maintenance

- The CC8 working temperature range must be regulated. Overheating will reduce the LED working life. Please allow adequate ventilation when using the Canvas light.
- Products must be placed on a stable, dry, flat surface. Avoid exposure to sunlight and operating in an environment with high humidity or extreme moisture levels.
- Don't beat, knock or shake the lighting equipment during the operation.
- If the CC8 isn't working normally, please contact the Ikan repair department. Please don't disassemble/re-assemble by yourself.
- Please place the CC8 in a cool and dry place when you don't use it for an extended period of time.

Troubleshooting

Failure	Failure Cause	Troubleshooting
Unit Won't Turn On	The power is connected incorrectly or the power switch is not turned on.	Turn on the light with the switch on the controller box. Make sure the unit is plugged into AC power.
During the operation lamp is out.	The unit may have malfunctioned. The unit's connecting cable may not be properly secured.	Try turning the control box off then on again. The cable can be disconnected and then reconnected.

Specifications

Light Source	336 x 1.0watt LEDs
Head Type	2750K-6500K + RGB
Beam Angle	120 Degree
Control/Dimming	Knob Control
Build Material	Flexable Fabric Material
Cooling System	Passive Cooling
Mounting System	Baby 5/8" receiver
Fixture Size	20 x 10 x .5 in.
Fixture Weight	1lb

Electrical Specifications

Power Supply Input	110-240VAC
Power Supply Output	15VDC
Fixture Power Consumption	14W; 7.4-14.8VDC

Optional Accessories

Some other products that work well with the CC8 available from Ikan include:

IBG-STND	Stand Bag
IBG-SB15	Saddle Sandbag & Weight Bag - 15 lb
CP-STND-V3	Compact Light Stand
HD-STND-V2	Heavy Duty Light Stand

Learn More

More dynamic information at official website: www.ikancorp.com

Support

Contact email: support@ikancorp.com

CONDITIONS OF WARRANTY SERVICE

- Free service for one year from the day of purchase if the problem is caused by manufacturing errors.
- The components and maintenance service fee will be charged if the warranty period is expired.

Free Service will not be Provided in the Following Situations:(*Even if the product is still within the warranty period.)

- Damage caused by abuse or misuse, dismantling, or changes to the product not made by the company.
- Damage caused by natural disaster, abnormal voltage, and environmental factors, etc.

©2020 Ikan International. All rights reserved.

