

BZ-2X-ANT



Blitz Double Range High Gain Antenna



What's Included

- ☐ 1 x Blitz High Gain Antenna
- ☐ 5 x Antenna Connectors (NJWC to SMA Coaxial)
- ☐ 1 x Antenna Bracket
- ☐ 4 x M3 Mounting Screws
- ☐ 1 x Light Stand Adapter with Washer
- ☐ 1 x Mounting Plate
- ☐ 2 x D-Rings

Getting Started

The Blitz BZ-2X-ANT is a directional high-gain antenna compatible with the Blitz 1500 receiver. The five antenna ports connect to the panel antenna which can increase the maximum distance from 1500ft to 3000ft under the same conditions. This panel antenna will increase distance as well as signal strength for short distances. Please follow the same instructions in the BZ1500 manual for best performance.

Installation Guide



*** (BZ1500 receiver is included in BZ3000)

1. Install the antenna bracket to the high gain antenna using the 4pcs M3 *8 screws.
2. Using a 1/4-20" D-Ring tighten the antenna to the mounting plate.
3. Attach the light stand adapter with large washer to the mounting plate.
4. Using a 1/4-20" D-Ring wish washer to mounting receiver to mourning plate.
5. Attach the 5 antenna connectors.

Specifications

Model	BZ-2X-ANT
Frequency Range	5.0 - 5.9 GHz
Gain	14 ± 0.5 dBi
(F/B Ratio)	≥ 25 dB
Isolation	≥ 25 dB
Horizontal Beam Width	40 ± 5°
Vertical Beam Width	40 ± 5°
V.S.W.R.	≤ 2.0
Polarization	5 ports (3 ports vertical; 2 ports ± 45°)
Maximum Power	100 W
Impedance	50 ohm
Working Temperature	-40°C to 55°C
Connector Types	5*N-K
Lightning Protection	DC-Ground

Antenna Dimensions	12 x 12 x 0.9 in. 305 x 305 x 25 mm
Antenna Material	ABS
Weight	4.3 lbs 1.97 kg
Rated Wind Velocity	369 m/s

Optional Accessories

Some other products that work well with this item available from Ikan include:

HD-STND-V2 Heavy Duty Light Stand
IBS-970 Sony L-Series NP-F970 Compatible Battery

Learn More

More dynamic information at official website: www.ikancorp.com

Support

Contact email: support@ikancorp.com

CONDITIONS OF WARRANTY SERVICE

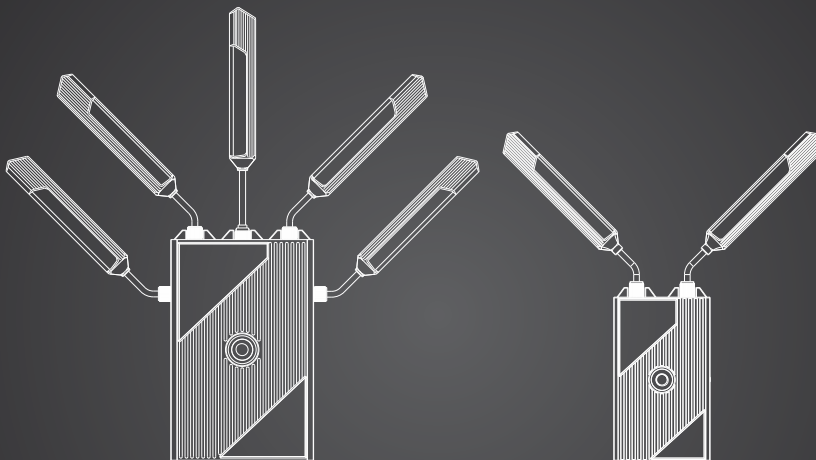
- Free service for one year from the day of purchase if the problem is caused by manufacturing errors.
- The components and maintenance service fee will be charged if the warranty period is expired.

Free Service will not be provided in the following situations: (*Even if the product is still within the warranty period.)

- Damage caused by abuse or misuse, dismantling, or changes to the product not made by the company.
- Damage caused by natural disaster, abnormal voltage, and environmental factors, etc.

©2019 Ikan International. All rights reserved.





BZ1500

1500FT WIRELESS HDMI/SDI TRANSMISSION SYSTEM



PACKING LIST



- ① Receiver x 1
- ② Transmitter x 1
- ③ 5GHz antennas x 8
- ④ User manual x 1
- ⑤ DC Conversion Cable(LEMO 4-pin Male to D-tap) x 2
- ⑥ Magic Arm x 1
- ⑦ Crab clamp x 1
- ⑧ Mushroom Antenna x 2

• Please subject to actual shipment as the standard if any difference in accessories.



PARAMETERS

	Transmitter	Receiver
Interface	SDI Input(BNC Female) SDI Loop out(BNC Female) HDMI Input(Type A Female) 2 Antenna port(RP-SMA male) DC Input(4 pin LEMO Female)	SDI output(BNC female) SDI Loop out(BNC Female) HDMI output(Type A female) 5 Antenna port(RP-SMA male) DC Input(4pin LEMO female) Mini USB port
Supply Voltage Range	7-36V DC	7-36V DC
Power Consumption	<7W	<7.5W
Weight	298g	601g
Size	(LxWxH):116x68x25mm, not include antennas and battery plate	(LxWxH):158x102x25mm, not include antennas and battery plate
Input Video Format	HDMI-480p60, 576p50, 720p50/59 94/60, 1080i50/59 94/60, 1080p23 98/24/25/29 9/30/50/59 94/60, HDMI Type A; SDI-3G, HD, and SD-SDI (auto-selected); SMPT-259/274/292/296/372/424/425; 1x BNC; 1x BNC Loopout;	/
Output Video Format	/	HDMI-480p60, 576p50, 720p50/59 94/60, 1080i50/59 94/60, 1080p23 98/24/25/29 9/30/50/59 94/60; HDMI Type A; SDI-3G, HD, and SD-SDI (auto-selected); SMPT-259/274/292/296/372/424/425; 2x BNC output;
Input Audio	SDI embedded 2 channel 24 bit/48KHz	/
Output Audio	/	SDI embedded 2 channel 24 bit/48KHz
Signal Indicator	Link: Green Video: Yellow	Link: Green Video: Yellow RSSI-Blue(5 LEDs)
Frequency Band	5.1-5.9GHz,configurable with China, North America, Europe,etc	5.1-5.9GHz,configurable with China, North America, Europe,etc
Modulation Mode	OFDM-16QAM	OFDM-16QAM
Transmission Power	Maximum 18dbm	/
Receiver Sensitivity	/	-75dbm
Occupied Bandwidth	40MHz	40MHz

INTRODUCTION

This Wireless HD Transmission suites utilize today's most advanced wireless video transmission technology, which can realize the broadcast-class and uncompressed 3G-SDI/HDMI 1080P60 video signal transmitted with no compression and zero delay.

All antennas works in 5.1-5.9GHz frequency band and support 10 workable frequency channels. This unit of 1500ft effective transmission range.

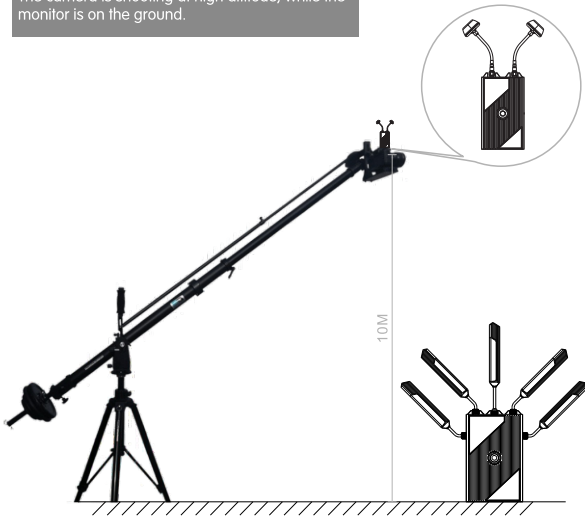


THE APPLICATION OF MUSHROOM ANTENNA

When the height difference between the transmitter and the receiver is large, the mushroom antenna is recommended to enhance the stability of the wireless transmission.

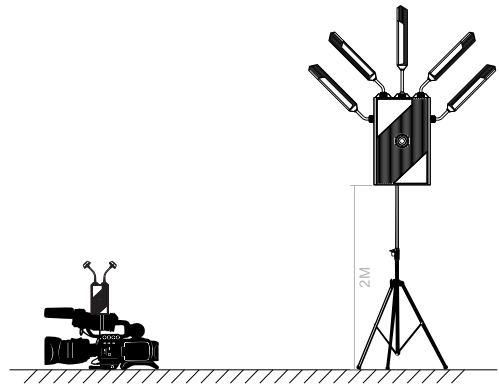
Scene 1

The camera is shooting at high altitude, while the monitor is on the ground.

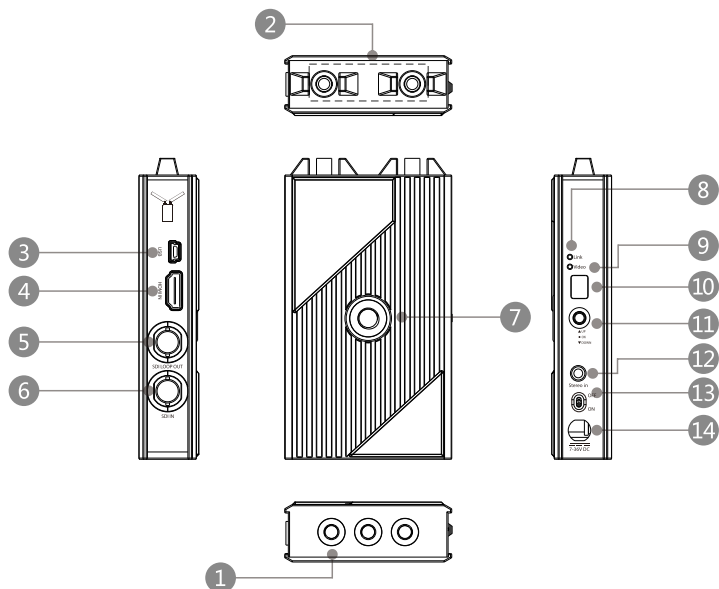


Scene 2

Camera is shooting very close to the ground, while the monitor is used at higher place.



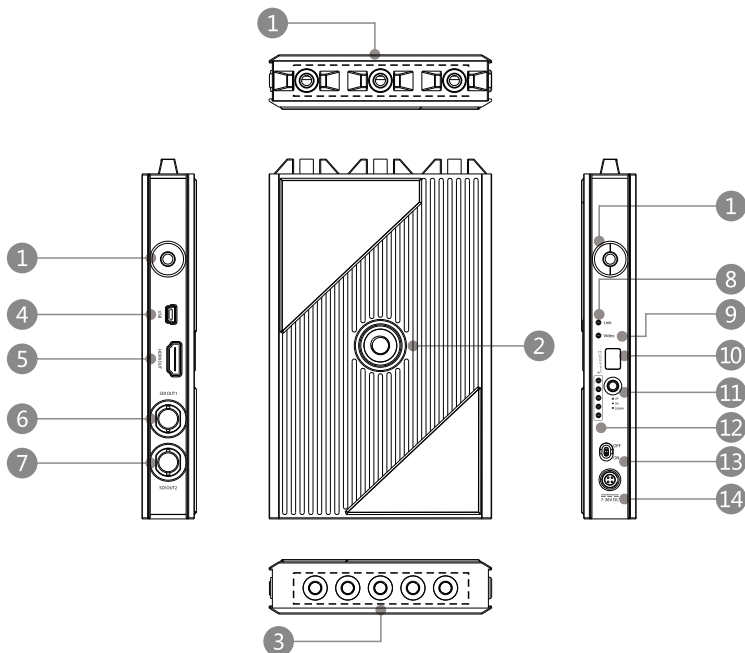
PRODUCT INTRODUCTION



Transmitter

- 1 1/4-20 Screw Hole
- 2 Antenna Port(RP-SMA male)
- 3 Mini USB
- 4 HDMI input
- 5 3G SDI LoopOut
- 6 3G SDI Input
- 7 3/8-16 screw hole
- 8 Link indicator
- 9 Video indicator
- 10 Frequency display
- 11 frequency adjustment and confirm button
- 12 3.5mm stereo in
- 13 Power switch
- 14 DC power input(7-36V)

PRODUCT INTRODUCTION



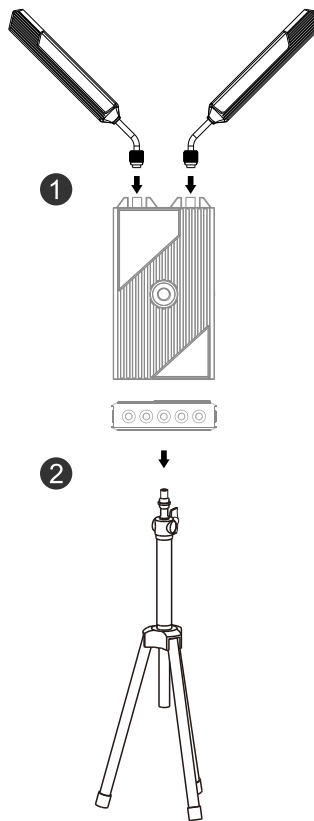
Receiver

- 1 Antenna Port(RP-SMA male)
- 2 3/8-16 screw hole
- 3 1/4-20 screw hole
- 4 Mini USB
- 5 HDMI output
- 6 SDI out 1
- 7 SDI out 2
- 8 Link indicator
- 9 Video indicator
- 10 Frequency display
- 11 Frequency adjustment and confirm button
- 12 Received Signal Strength Indicator (RSSI)
- 13 Power switch
- 14 DC power input(7-36V)

■ Installation details and cautions

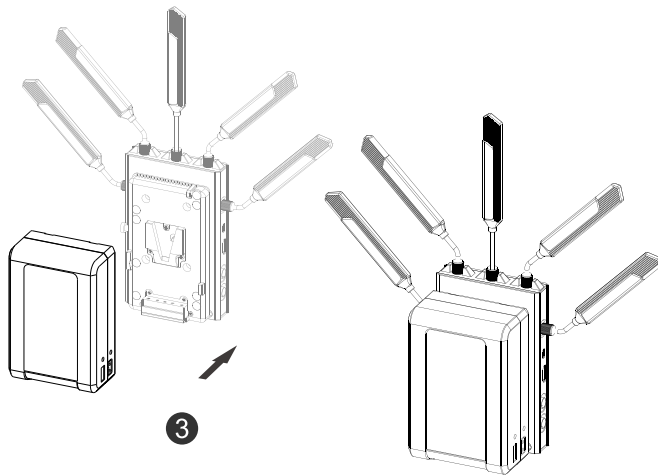
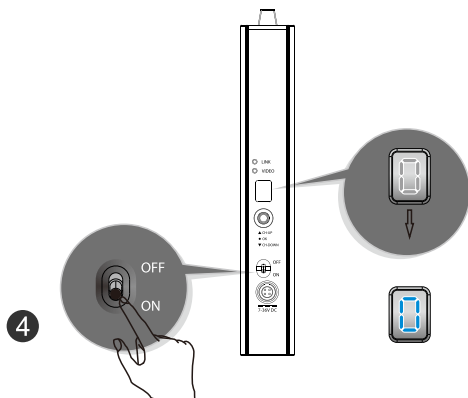
Install the antennas as picture

Stabilize transmitter and receiver



■ Installation details and cautions

Install battery or connect power supply

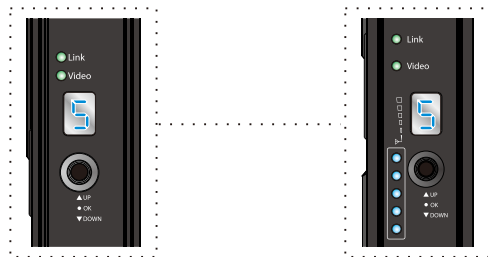


Turn on the switch

■ Installation details and cautions

Set transmitter and receiver as same channel

5



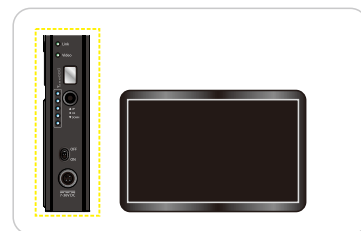
Set up connection

6

Before connection



After connection

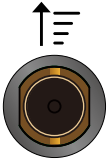


■ Installation details and cautions

When both SDI and HDMI have valid video input, the system will take SDI input as priority



HDMI signal



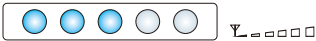
SDI signal

RSSI indicators

Strong



Middle



Weak



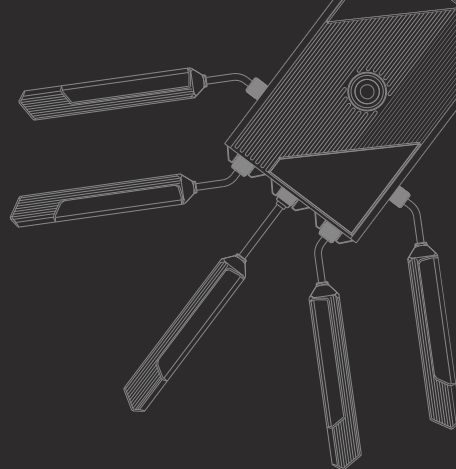
TROUBLE SHOOTING

1 No output on display

- a) Check TX and RX power first, if power supply through battery or external power source, please make sure the battery or external power source works normally;
- b) Check if TX antenna and RX antenna installed right and steady;
- c) After that, check 'Video' indicator, if TX 'Video' indicator is not light, then check SDI or HDMI cable is plugged in and video source is ready please;
- d) Finally check input video format is compatible with this product specs.

2 Poor output video quality

- a) Check if SDI or HDMI input or output cable is plugged well;
- b) Make sure the transmitter and receiver are placed at least 1.5 meters above the ground;
- c) Please check the wireless signal strength indicator "RSSI" status. There should be 2-3 RSSI LED lit if the user want to get better video quality; if there is only 1 RSSI LED or no LED light, that means the received wireless signal is weak, and should decrease the transmission distance or try to change to other frequency channels in case some exist interference.



FCC STATEMENT

1, This device complies with Part 15 of the FCC Rules. Operation is subject to the following two conditions:

(1) This device may not cause harmful interference.

(2) This device must accept any interference received, including interference that may cause undesired operation.

2, Changes or modifications not expressly approved by the party responsible for compliance could void the user's authority to operate the equipment.

■ NOTE

This equipment has been tested and found to comply with the limits for a Class B digital device, pursuant to Part 15 of the FCC Rules. These limits are designed to provide reasonable protection against harmful interference in a residential installation.

This equipment generates uses and can radiate radio frequency energy and, if not installed and used in accordance with the instructions, may cause harmful interference to radio communications. However, there is no guarantee that interference will not occur in a particular installation. If this equipment does cause harmful interference to radio or television reception, which can be determined by turning the equipment off and on, the user is encouraged to try to correct the interference by one or more of the following measures:

Reorient or relocate the receiving antenna

Increase the separation between the equipment and receiver

Connect the equipment into an outlet on a circuit different from that to which the receiver is connected.

Consult the dealer or an experienced radio/Tv technician for help.

■ RF WARNING STATEMENT

The device has been evaluated to meet general RF exposure requirement. The device can be used in portable exposure condition without restriction.

HEALTH AND SAFETY DISCLAIMER

This device complies with Part 15 of the FCC Rules. Operation is subject to the following two conditions:

(1) this device may not cause harmful interference, and (2) this device must accept any interference received, including interference that may cause undesired operation.

Please review FCC's Radio Frequency Safety before the operation at <https://www.fcc.gov/general/radio-frequency-safety-0>.

The following recommendations are made to help maintain RF safety in the Film and Television production environment:

1. All IKAN transmitters are certified for FCC Part 15 and comply with the following:
 - a. The transmitter has a legible FCC ID number on the manufacturer's product tag affixed to the unit.
 - b. The transmitter has not been modified in any way from its original state as delivered by the manufacturer.
 - c. All transmitter cabling is in good condition and properly attached.
2. The operator should have a clear understanding of the requirements for operating the equipment to maintain unconditional compliance with the MPE* (Maximum Permissible Exposure) limits for both controlled and uncontrolled environments.
3. The operator should review the FCC policy on human exposure to radio frequency on FCC's website: <https://www.fcc.gov/general/radio-frequency-safety-0>.
4. When the "unconditionally compliant" condition cannot be met, the operator should mitigate the exposure danger by observing the time limit for RFR exposure so as not to exceed the MPE*.

HEALTH AND SAFETY DISCLAIMER

5. When a wireless video transmitter is used that is not certified under FCC Part 15 and requires a Special Temporary Authorization (STA) from the FCC, the operator should understand the potential for RFR exposure and take precautions to not exceed the MPE* during the course of work. (Such equipment is typically used for long-range shots and uses high-powered transmitters and high-gain directional antennas.)

6. The operator should be aware of the RF environment to understand what other transmitters may contribute to the total exposure to RFR.

7. Cinematographers should receive specialized training regarding the identification and mitigation of RF Safety issues in the workplace.

By using this product, you hereby acknowledge that you have read this disclaimer and warnings carefully and that you understand and agree to abide by the terms and conditions herein. You agree that you are solely responsible for your own conduct while using this product, and for any consequences thereof. You agree to use this product only for purposes that are proper and in accordance with all applicable laws, rules, and regulations, and all terms, precautions, practices, policies and guidelines IKAN has made and may make available.

IKAN accepts no liability for damage, injury or any legal responsibility incurred directly or indirectly from the use of this product. The user shall observe safe and lawful practices including, but not limited to, those set forth in this document.

*This means that as long as a distance of at least 5 in. from the transmitting antenna is maintained, it is not possible to exceed the MPE limits set forth by the FCC.



Ikan International

11500 S. Sam Houston Pkwy West
Houston, TX 77031
TEL: +1.713.272.8822
FAX: +1.713.995.4994

SALES

Reseller and Consumer
sales@ikancorp.com

MARKETING

Sponsorship, Partnership, Brand Ambassadors, and Media
marketing@ikancorp.com

SUPPORT

Returns, exchanges, and general support
support@ikancorp.com