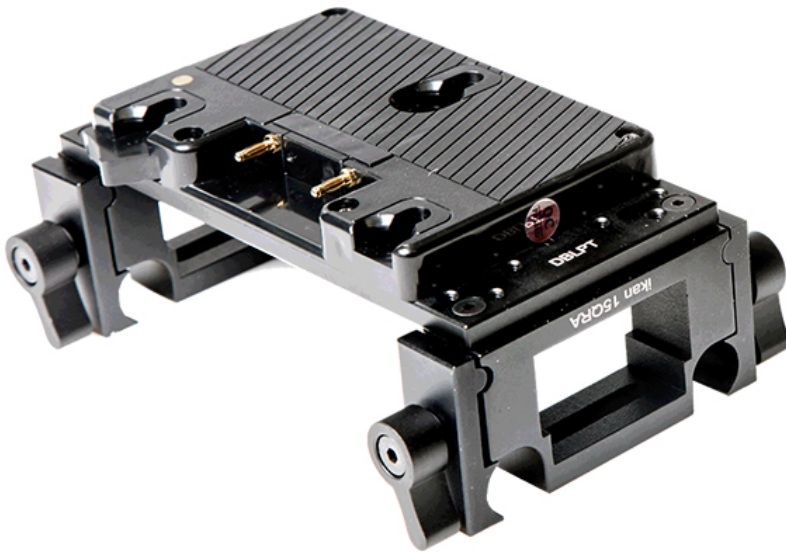


BMPCC-PBK-QR

Blackmagic Pocket Cinema Camera Quick Release Pro Battery Kit QUICKSTART GUIDE



What's included

- 1 x ELE-DBLPT
 - 2 x ELE-15QRA
 - 1 x Pro Battery Mount Plate
 - 1 x AB101 Power Tap Cable
 - 1 x BMPCC Power Adapter
 - 4 x Thumb Screws
- V-Mount
 AB-Mount

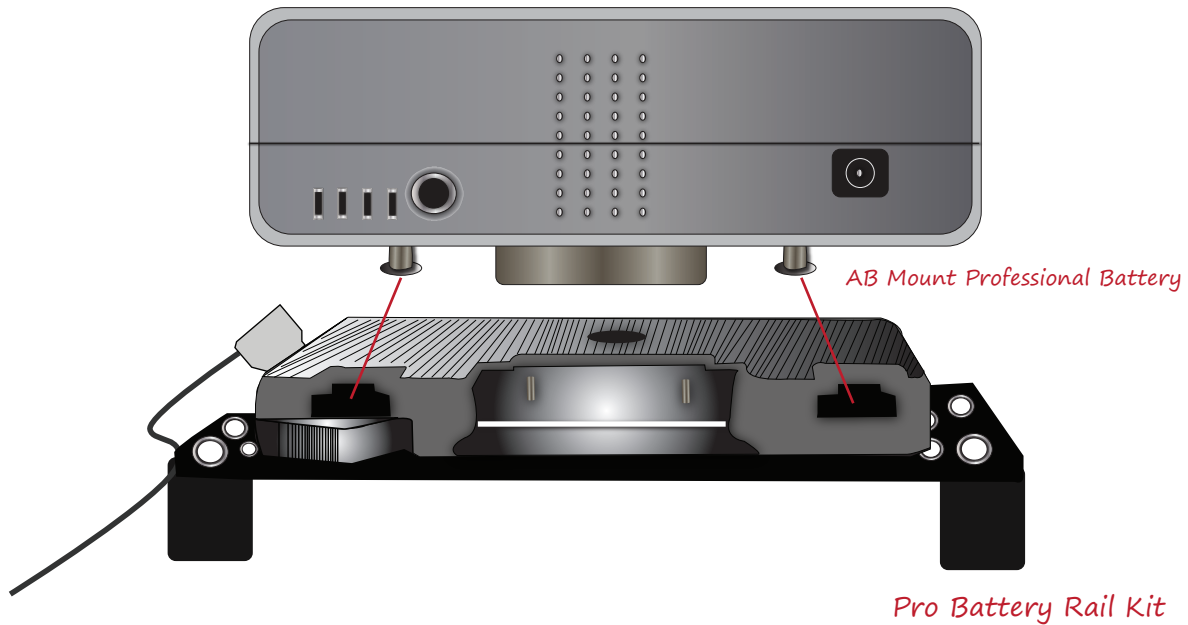
Checked by

BMPCC-PBK-QR

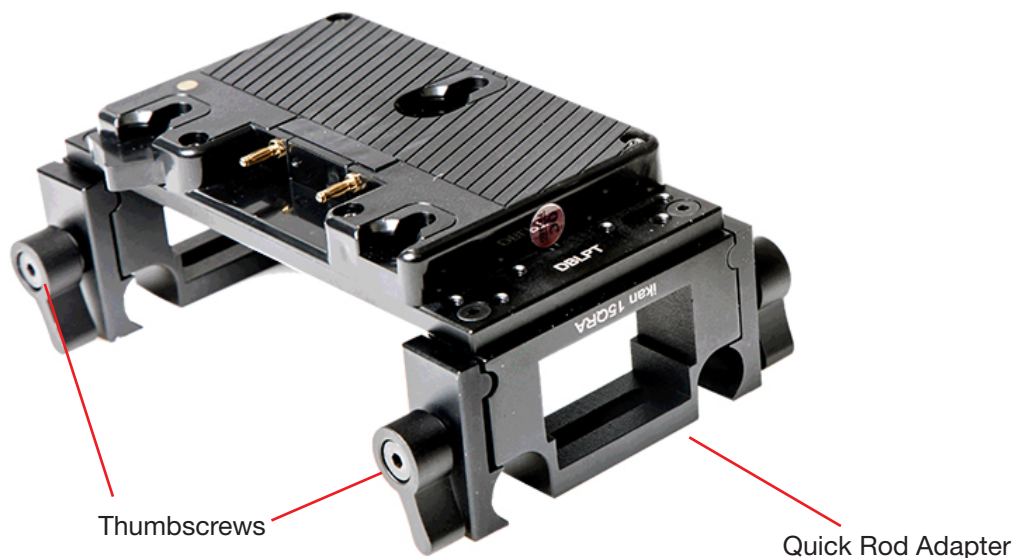
Blackmagic Pocket Cinema Camera Quick Release Pro Battery Kit

QUICKSTART GUIDE

ikan's Quick Release Pro Battery Rail Kit, designed for Blackmagic Pocket Cinema Camera, is fast, easy and simply to use. Attach your Pro battery (Anton Bauer or V-Mount) to the battery plate and make sure it is secure.



Loosen the thumbscrews to the Quick Rod Adapter and attach it on to your 15mm rail system and then tighten the thumbscrews. You can either mount that battery kit facing over or under the 15mm rails. To detach the quick snap battery kit, loosen the thumbscrews enough for the grips to clear the 15mm rails.



ikan

www.ikancorp.com

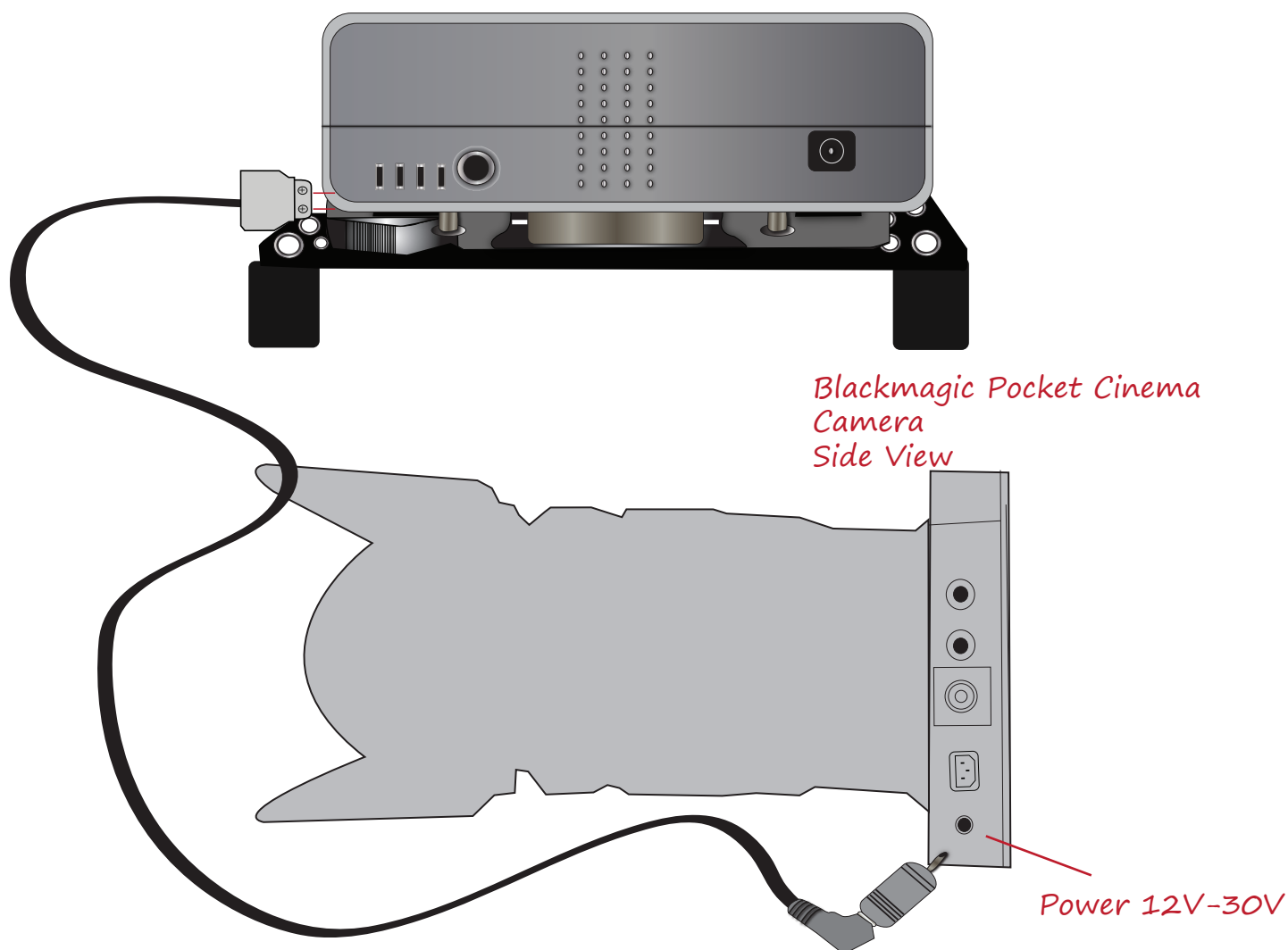
713-272-8822

BMPCC-PBK-QR

Blackmagic Pocket Cinema Camera Quick Release Pro Battery Kit

QUICKSTART GUIDE

After you have mounted the battery kit to your discretion, take P-tap cable with the adapter and plug the two prong end to the battery plate and the other end to the Blackmagic Pocket Cinema Camera. Now you are running off Pro Battery power and not the internal battery of the Blackmagic Cinema Camera.





CONDITIONS OF WARRANTY SERVICE

- Free service for one year from the day of purchase if the problem is caused by manufacturing errors.
- The components and maintenance service fee will be charged if the warranty period has expired.

Free Service will not be Provided in the Following Situations: (* Even if the product is still within the warranty period.)

- Damage caused by abuse or misuse, dismantling, or changes to the product not made by the company.
- Damage caused by natural disaster, abnormal voltage, and environmental factors etc.